

FRONT ELEVATION

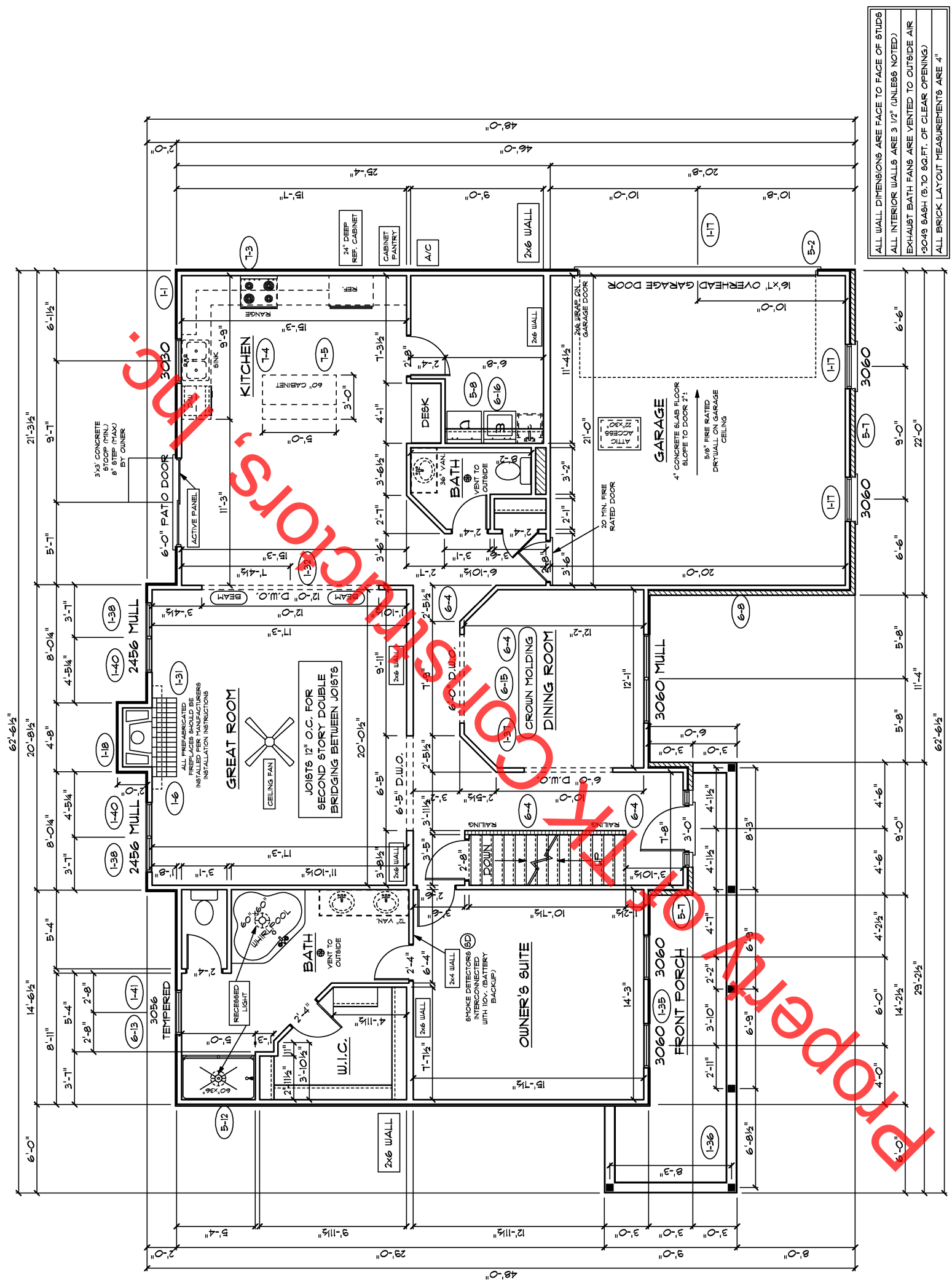
Property of TK Constructors, Inc.

NOTE: STOOPS, STEPS, APRON AND DRIVE BY OWNER

GRADE ALLAY FROM FOUNDATION BY OWNER

GRADE ALLAY FROM FOUNDATION BY OWNER

18" FOOTER WIDTH MIN. SIZE



ALL WALL DIMENSIONS ARE FACE TO FACE OF STUDS
 ALL INTERIOR WALLS ARE 3 1/2" (UNLESS NOTED)
 EXHAUST BATH FANS ARE VENTED TO OUTSIDE AIR
 3049 BASH (5' TO 60. FT. OF CLEAR OPENING)
 ALL BRICK LAYOUT MEASUREMENTS ARE 4"

FIRST FLOOR PLAN

ANDERSEN WINDOW SCHEDULE - 200 SERIES - (6-1)	
ANDERSEN MODEL NO.	R.O. SIZE
3030	36" x 36"
3040	36" x 48"
3049*	36" x 51"
3056*	36" x 66"
3060*	36" x 72"
3049 MULL*	73" x 51"
3056 MULL*	73" x 66"
3060 MULL*	73" x 72"
ANDERSEN SLIDING DOOR R.O. 72 3/4" x 82 1/8"	
3'-0" FRONT DOOR R.O. 38 3/8" x 82 1/2"	
3'-0" FRONT DOOR WITH (1) SIDELITE R.O. 51 7/8" x 82 1/2"	
3'-0" FRONT DOOR WITH (2) SIDELITES R.O. 65 3/8" x 82 1/2"	
R.O. FOR BI-FOLD DOORS USING DRYWALL JAMB FACING = 1 1/4" + DOOR SIZE x (81 1/2")	
R.O. FOR BYPASS DOORS USING DRYWALL JAMB FACING MAKE SAME AS BOTH DOORS ADDED TOGETHER	
ALL INTERIOR DOORS SIZE + 2" TO WIDTH x 82 1/2" HIGH	
R.O. POCKET DOOR (2x DOOR WIDTH + 1") x 85" HIGH	

* - DENOTES OPENING MEETS
EGRESS REQUIREMENTS

9'-0" FIRST FLOOR CEILING HEIGHT (1-14)	
INCLUDES:	
1.	4 1/4" BASEBOARDS IN LIEU OF 3 1/4"
2.	3060 WINDOWS IN LIEU OF 3056 WINDOWS
3.	3056 WINDOWS IN LIEU OF 3049 WINDOWS
4.	DRYWALL WRAPPED OPENINGS 12" TALLER
5.	30" KITCHEN CABINETS STANDARD
6.	16'x7' GARAGE DOOR STANDARD

SECOND FLOOR PLAN

FIRST FLOOR SQ.FT.	1,739
SECOND FLOOR SQ.FT.	1,100
TOTAL LIVING SQ.FT.	2,839
GARAGE	451
TOTAL SQ.FT.	3,290
EXCLUDING PORCH	166

ANDERSEN WINDOW SCHEDULE
- 200 SERIES - (6-1)

ANDERSEN MODEL NO.	R.O. SIZE
3030	36" x 36"
3040	36" x 48"
3049*	36" x 51"
3056*	36" x 66"
3060*	36" x 72"
3049 MULL*	73" x 51"
3056 MULL*	73" x 66"
3060 MULL*	73" x 72"

ANDERSEN SLIDING DOOR
R.O. 72 3/4" x 82 7/8"

3'-0" FRONT DOOR
R.O. 38 3/8" x 82 1/2"

3'-0" FRONT DOOR WITH (1) SIDELITE
R.O. 51 1/8" x 82 1/2"

3'-0" FRONT DOOR WITH (2) SIDELITES
R.O. 65 3/8" x 82 1/2"

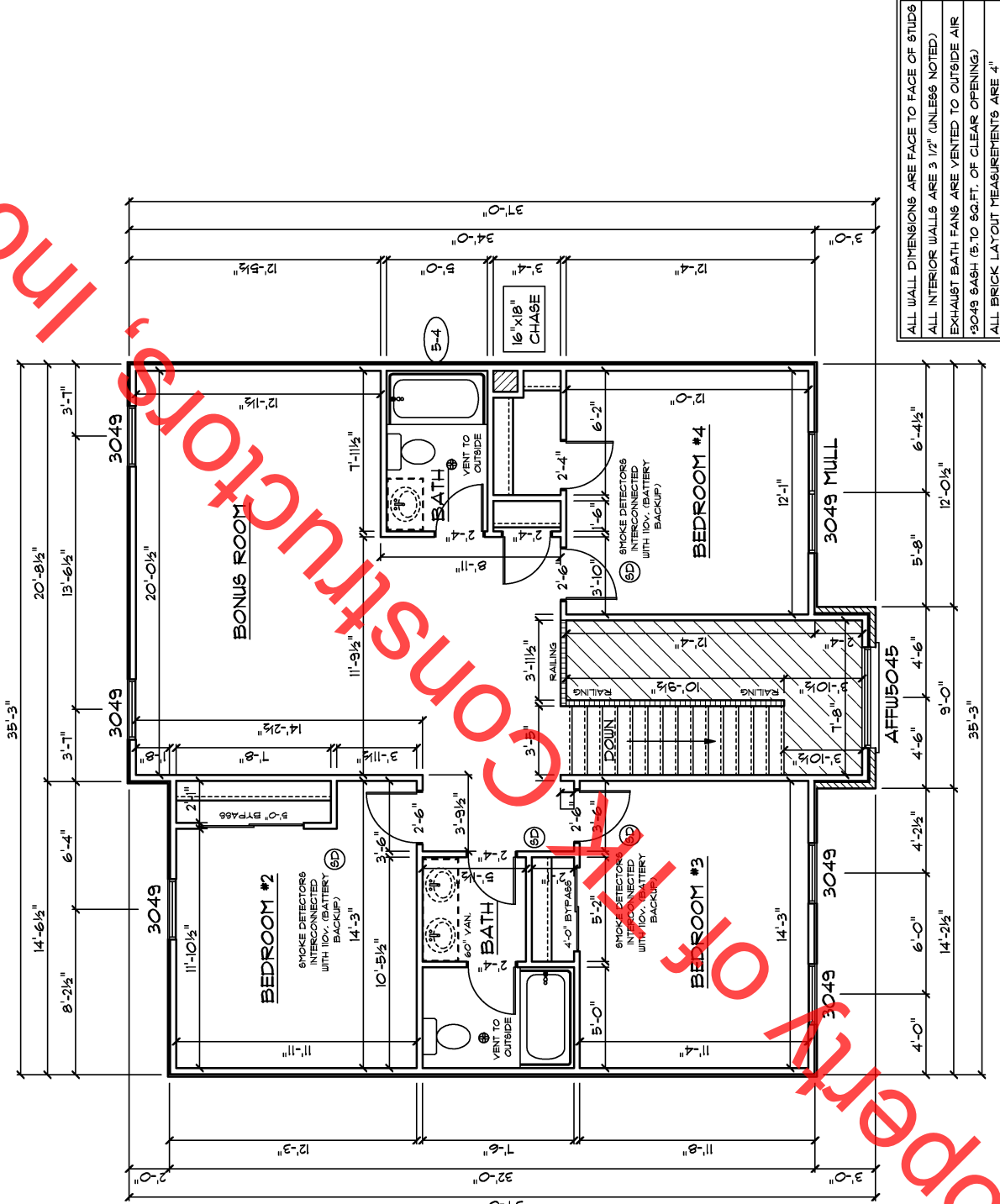
R.O. FOR BI-FOLD DOORS USING DRYWALL
JAMB FACING = 1 1/4" + DOOR SIZE x (81 1/2")

R.O. FOR BYPASS DOORS USING DRYWALL
JAMB FACING MAKE SAME AS BOTH DOORS
ADDED TOGETHER

ALL INTERIOR DOORS
SIZE + 2" TO WIDTH x 82 1/2" HIGH

R.O. POCKET DOOR
(2x DOOR WIDTH + 1") x 85" HIGH

* - DENOTES OPENING MEETS
EGRESS REQUIREMENTS



ALL WALL DIMENSIONS ARE FACE TO FACE OF STUDS
ALL INTERIOR WALLS ARE 3 1/2" (UNLESS NOTED)
EXHAUST BATH FANS ARE VENTED TO OUTSIDE AIR
*3049 6ASH (5.10 SQ.FT. OF CLEAR OPENING)
ALL BRICK LAYOUT MEASUREMENTS ARE 4"

Property of TK Constructors, Inc.