


marked up. 10-11-13



Property of TK Constructors, Inc.

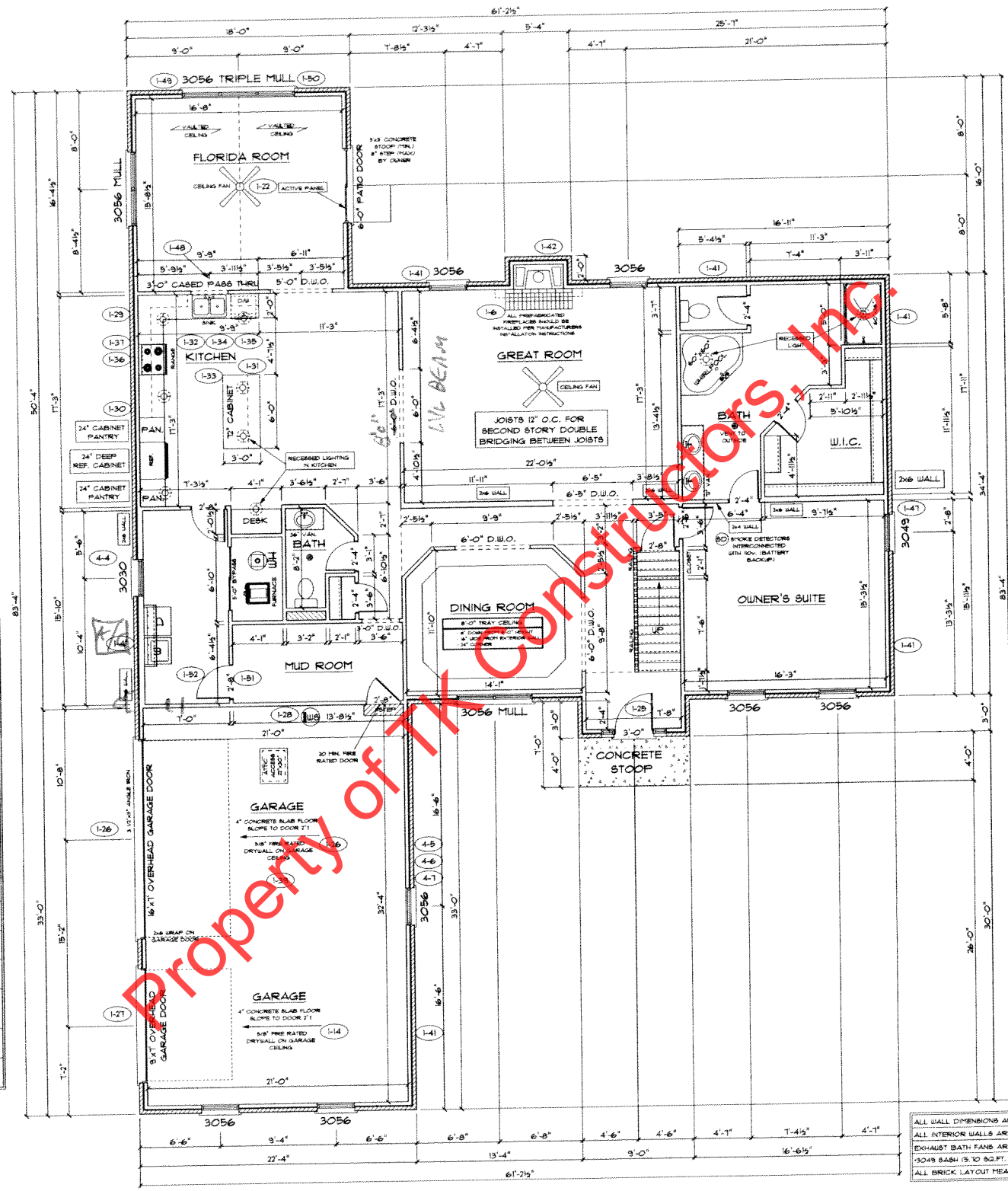
KLF
CE

ADDENDUM 1,1	PAGE NO.:	10
VER: 0333 PM	DRAWING BY: SES	
 CONSTRUCTORS		
DATE: September 09, 2013	JOB NO.:	110-13-0012
TK CONSTRUCTORS YORKTOWN		

FIRST FLOOR PLAN

ANDERSEN WINDOW SCHEDULE
- 200 SERIES -

ANDERSEN MODEL NO.	R.O. SIZE
3030	36" x 36"
3040	36" x 48"
3049	36" x 51"
3056	36" x 66"
3060	36" x 12"
3049 MULL*	13" x 51"
3056 MULL*	13" x 66"
3060 MULL*	13" x 12"
ANDERSEN SLIDING DOOR R.O. 72 3/4" x 82 1/8"	
3'-0" FRONT DOOR R.O. 38 3/8" x 82 1/2"	
3'-0" FRONT DOOR WITH (1) SIDELITE R.O. 51 1/8" x 82 1/2"	
3'-0" FRONT DOOR WITH (2) SIDELITES R.O. 65 3/8" x 82 1/2"	
R.O. FOR BI-FOLD DOORS USING DRYWALL JAMB FACING + 1 1/4" + DOOR SIZE x (81 1/2")	
R.O. FOR BYPASS DOORS USING DRYWALL JAMB FACING MAKE SAME AS BOTH DOORS ADDED TOGETHER	
ALL INTERIOR DOORS SIZE + 2" TO WIDTH x 82 1/2" HIGH	
R.O. POCKET DOOR (2x DOOR WIDTH + 7") x 88" HIGH	
* - DENOTES OPENING MEETS EGRESS REQUIREMENTS	



ALL WALL DIMENSIONS ARE FACE TO FACE OF STUDS.
ALL INTERIOR WALLS ARE 3/2"
EXHAUST BATH FANS ARE VENTED TO OUTSIDE AIR
3049 BASH (5 TO 82 FT. OF CLEAR OPENING)
ALL BRICK LAYOUT MEASUREMENTS ARE 4"

KLP
OK

SECOND FLOOR PLAN

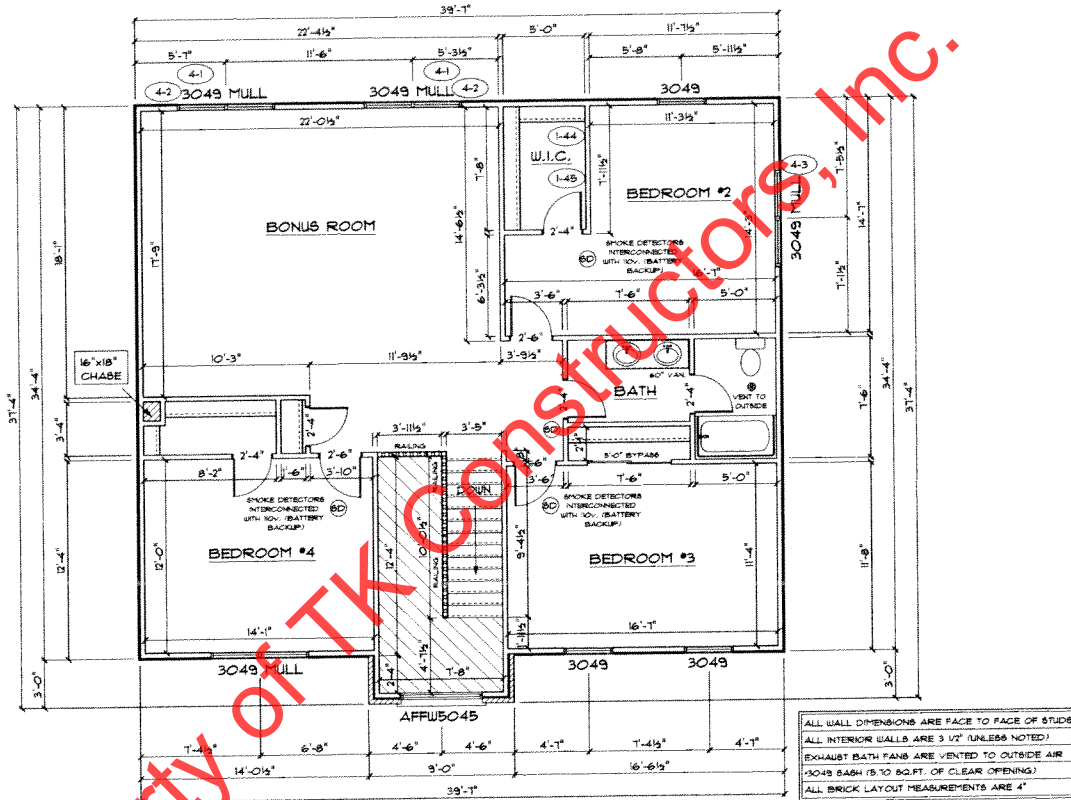
FIRST FLOOR SQ.FT.	2,389
SECOND FLOOR SQ.FT.	1,301
TOTAL LIVING SQ.FT.	3,690
GARAGE	131
TOTAL SQ.FT.	4,421
EXCLUDING PORCH	36

ANDERSEN WINDOW SCHEDULE
- 200 SERIES -

ANDERSEN MODEL NO.	R.O. SIZE
3030	36" x 36"
3040	36" x 48"
3049*	36" x 51"
3056*	36" x 66"
3060*	36" x 12"
3049 MULL*	13" x 51"
3056 MULL*	13" x 66"
3060 MULL*	13" x 12"

ANDERSEN SLIDING DOOR R.O. 12 3/4" x 82 1/8"	
3'-0" FRONT DOOR R.O. 38 3/8" x 82 1/2"	
3'-0" FRONT DOOR WITH (1) SIDELITE R.O. 51 1/8" x 82 1/2"	
3'-0" FRONT DOOR WITH (2) SIDELITES R.O. 65 3/8" x 82 1/2"	
R.O. FOR BI-FOLD DOORS USING DRYWALL JAMB FACING + 1 1/4" + DOOR SIZE x (81 1/2")	
R.O. FOR BYPASS DOORS USING DRYWALL JAMB FACING MAKE SAME AS BOTH DOORS ADDED TOGETHER	
ALL INTERIOR DOORS SIZE - 2" TO WIDTH x 82 1/2" HIGH	
R.O. POCKET DOOR (2x DOOR WIDTH + 1") x 85" HIGH	

* - DENOTES OPENING MEETS
EGRESS REQUIREMENTS



KLF
OK