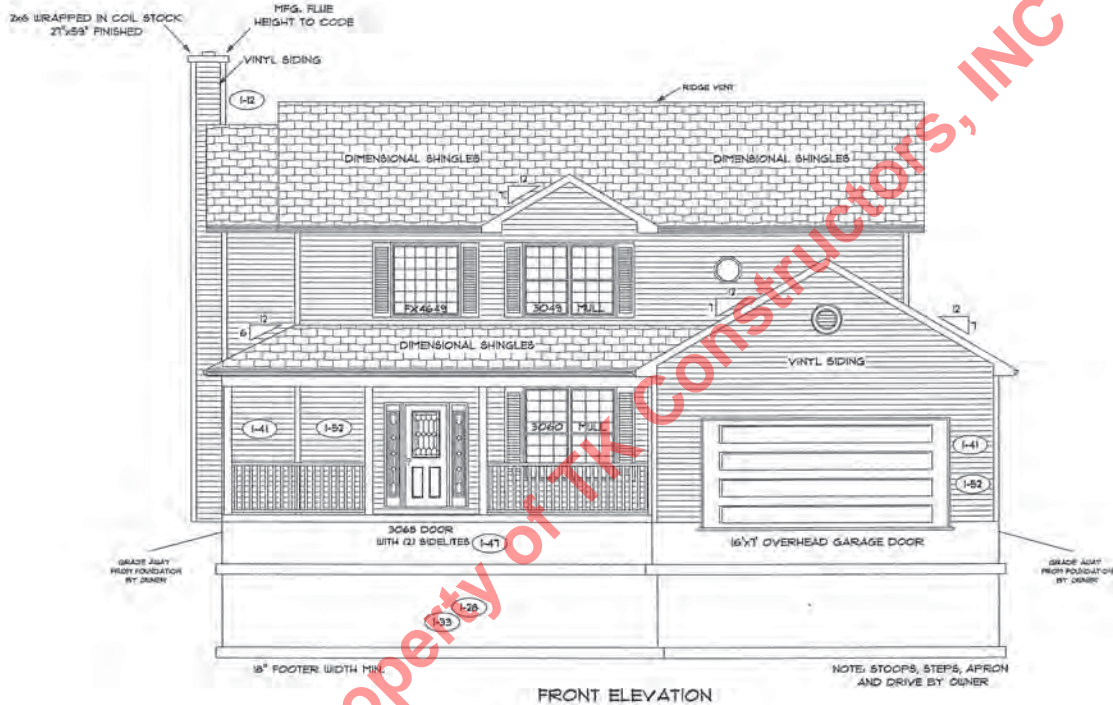
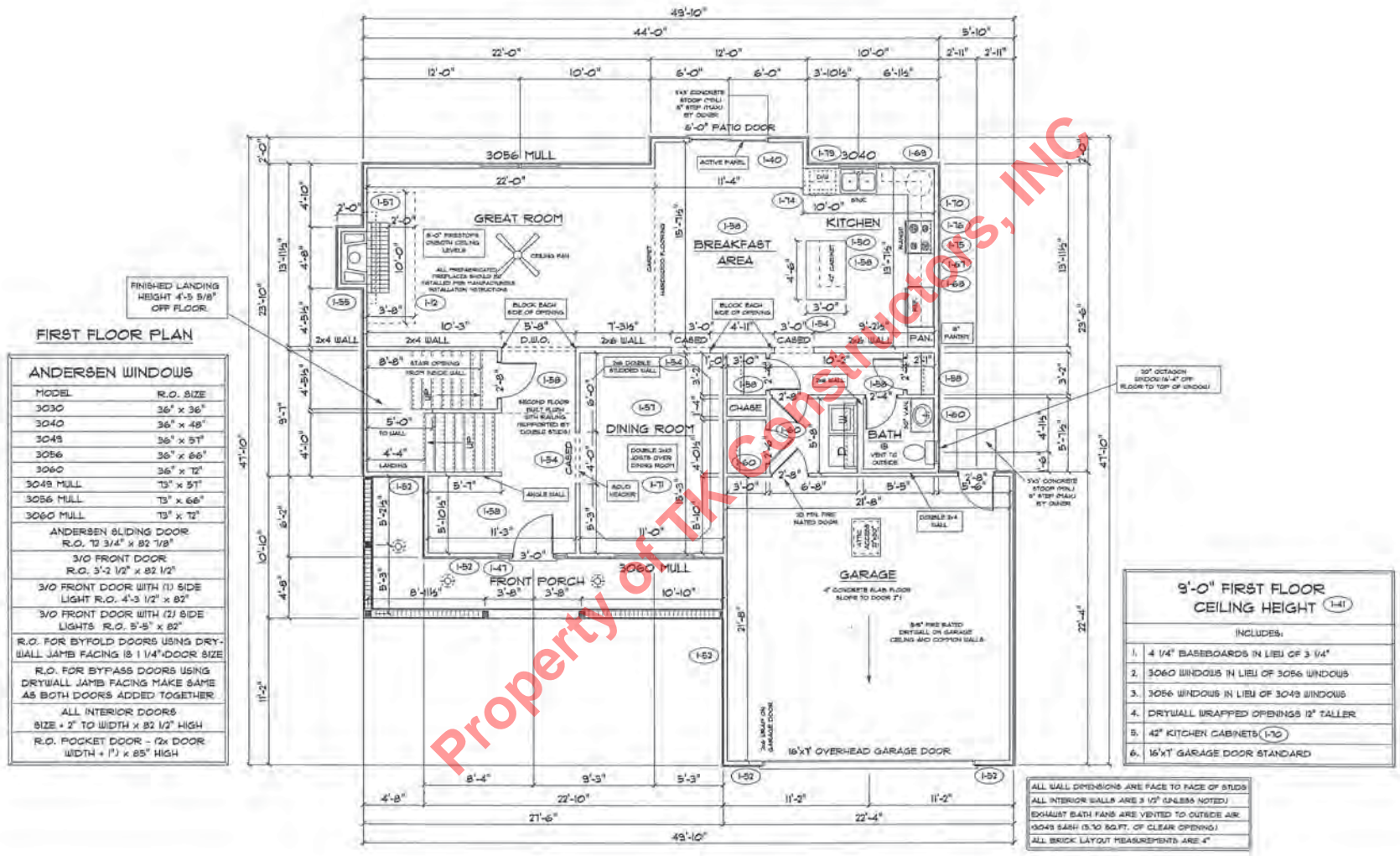


OPTIONS: SEE PAGE NO. 2



Property of TK Constructors, INC

 TK CONSTRUCTORS	DATE: May 04, 2011	MODEL: SARASOTA VER: 022109 DRAWING BY: SES SCALE: 1/8 IN.=1 FT.	PAGE NO: 1B
	TK CONSTRUCTORS		
	JOB NO.: 114-11-0033		
	DATE: May 04, 2011		



FIRST FLOOR PLAN

ANDERSEN WINDOWS

MODEL	R.O. SIZE
3030	36" x 36"
3040	36" x 48"
3049	36" x 51"
3056	36" x 66"
3060	36" x 72"
3049 MULL	73" x 51"
3056 MULL	73" x 66"
3060 MULL	73" x 72"

ANDERSEN SLIDING DOOR
R.O. 73 3/4" x 82 7/8"

3/0 FRONT DOOR
R.O. 5'-2 1/2" x 82 1/2"

3/0 FRONT DOOR WITH (1) SIDE LIGHT
R.O. 4'-3 1/2" x 82"

3/0 FRONT DOOR WITH (2) SIDE LIGHTS
R.O. 5'-5" x 82"

R.O. FOR BYFOLD DOORS USING DRY-WALL JAMB FACING IS 1 1/4" DOOR SIZE

R.O. FOR BYPASS DOORS USING DRY-WALL JAMB FACING MAKE SAME AS BOTH DOORS ADDED TOGETHER.

ALL INTERIOR DOORS
SIZE + 2" TO WIDTH x 82 1/2" HIGH

R.O. POCKET DOOR - 76" DOOR
WIDTH + 1" x 85" HIGH

9'-0" FIRST FLOOR CEILING HEIGHT (1-1)

- INCLUDES:
1. 4 1/4" BASEBOARDS IN LIEU OF 3 1/4"
 2. 3060 WINDOWS IN LIEU OF 3056 WINDOWS
 3. 3066 WINDOWS IN LIEU OF 3049 WINDOWS
 4. DRYWALL WRAPPED OPENINGS 12" TALLER
 5. 42" KITCHEN CABINETS (1-70)
 6. 16'X7' GARAGE DOOR STANDARD

ALL WALL DIMENSIONS ARE FACE TO FACE OF STUDS
ALL INTERIOR WALLS ARE 3 1/2" UNLESS NOTED
EXHAUST BATH FANS ARE VENTED TO OUTSIDE AIR
DOORS SASH (3/0 EQ. FT. OF CLEAR OPENING)
ALL BRICK LAYOUT MEASUREMENTS ARE 4"

FINISHED LANDING HEIGHT 4'-5 5/8" OFF FLOOR.

10" OCTAGON SPOON IN 4" ST. FLOOR TO TOP OF WINDOW

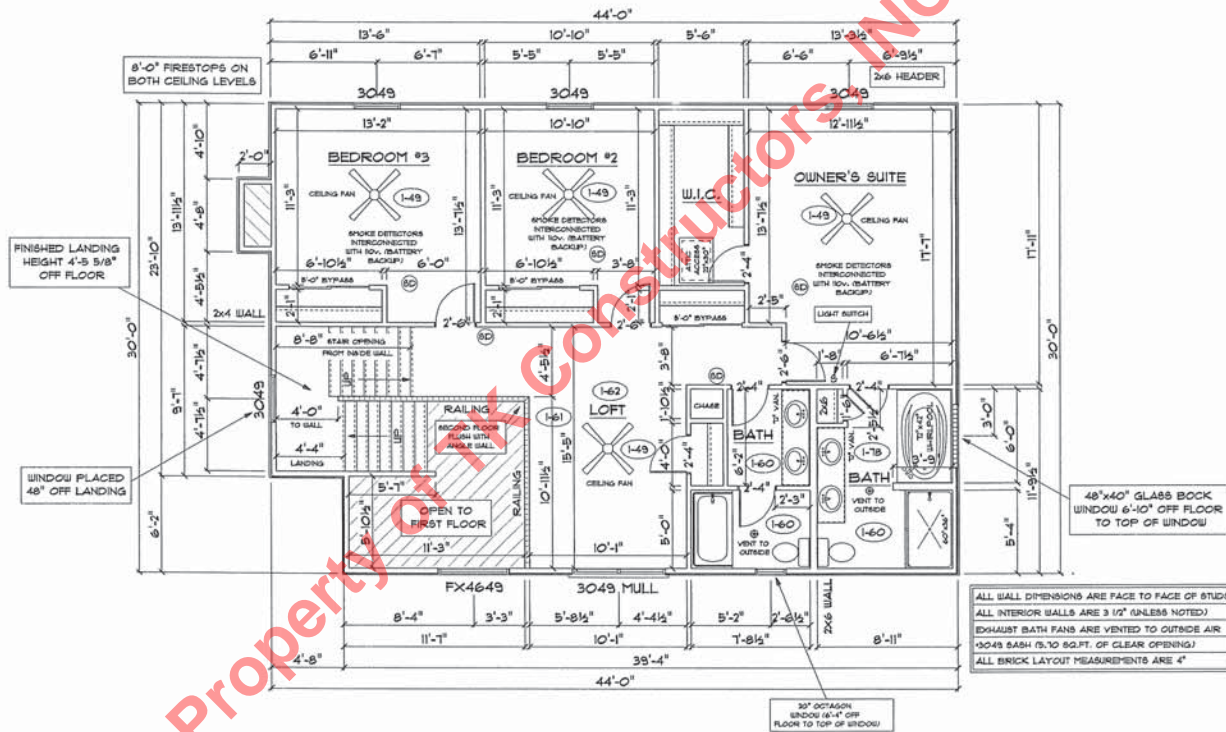
3/4" CONCRETE STOP WALL 1/4" ST. STAIR BY DOOR

16'X7' OVERHEAD GARAGE DOOR
4" CONCRETE SLAB FLOOR
SLOPE TO DOOR 2"
5/8" FIRE RATED DRYWALL ON GARAGE CEILING AND CROWN WALLS

SECOND FLOOR PLAN

First Floor Sq.ft.	1,228
Second Floor Sq.ft.	1,119
Total Living Sq.ft.	2,347
Garage	492
Total Sq.ft.	2,839
Excluding Porch	153

ANDERSEN WINDOWS	
MODEL	R.O. SIZE
3030	36" x 36"
3040	36" x 48"
3049	36" x 57"
3056	36" x 66"
3060	36" x 72"
3049 MULL	13" x 57"
3056 MULL	13" x 66"
3060 MULL	13" x 72"
FX4649	54" x 97"
ANDERSEN SLIDING DOOR	
R.O. 13 3/4" x 82 1/8"	
3/0 FRONT DOOR	
R.O. 3'-2 1/2" x 82 1/2"	
3/0 FRONT DOOR WITH (1) SIDE LIGHT	R.O. 4'-3 1/2" x 82"
3/0 FRONT DOOR WITH (2) SIDE LIGHTS	R.O. 5'-5" x 82"
R.O. FOR BYFOLD DOORS USING DRY-WALL JAMB FACING IS 1 1/4" DOOR SIZE	
R.O. FOR BYPASS DOORS USING DRYWALL JAMB FACING MAKE SAME AS BOTH DOORS ADDED TOGETHER	
ALL INTERIOR DOORS	
SIZE + 2" TO WIDTH x 82 1/2" HIGH	
R.O. POCKET DOOR - (2x DOOR WIDTH + 1") x 85" HIGH	



ALL WALL DIMENSIONS ARE FACE TO FACE OF STUDS
 ALL INTERIOR WALLS ARE 3/2" (UNLESS NOTED)
 EXHAUST BATH FANS ARE VENTED TO OUTSIDE AIR
 3049 SASH IS TO SQ.FT. OF CLEAR OPENING
 ALL BRICK LAYOUT MEASUREMENTS ARE 4"