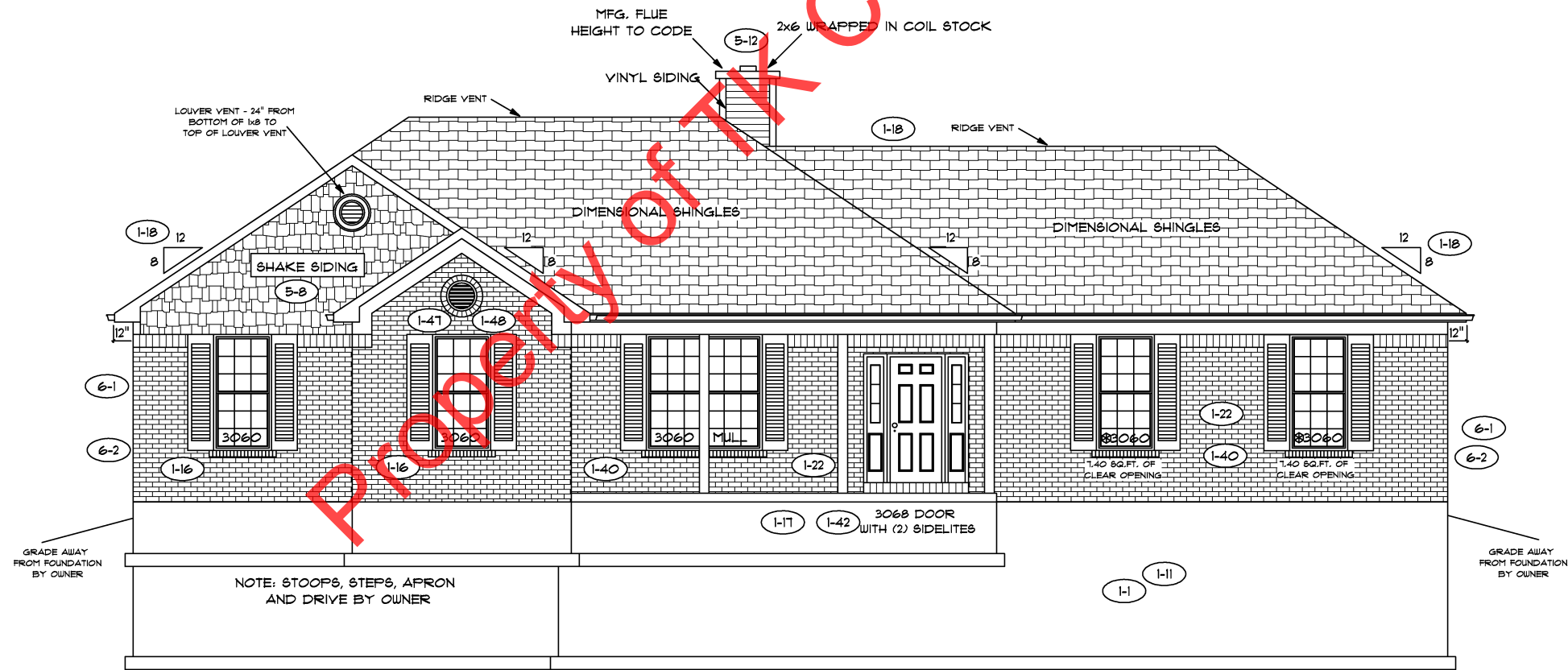


REAR ELEVATION

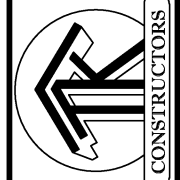
NOTE: STOOPS, STEPS, APRON AND DRIVE BY OWNER



FRONT ELEVATION

18" FOOTER WIDTH MIN.





FLOOR PLAN

TOTAL LIVING SQ.FT.	1,935
GARAGE	495
TOTAL SQ.FT.	2,430
EXCLUDING PORCH	132

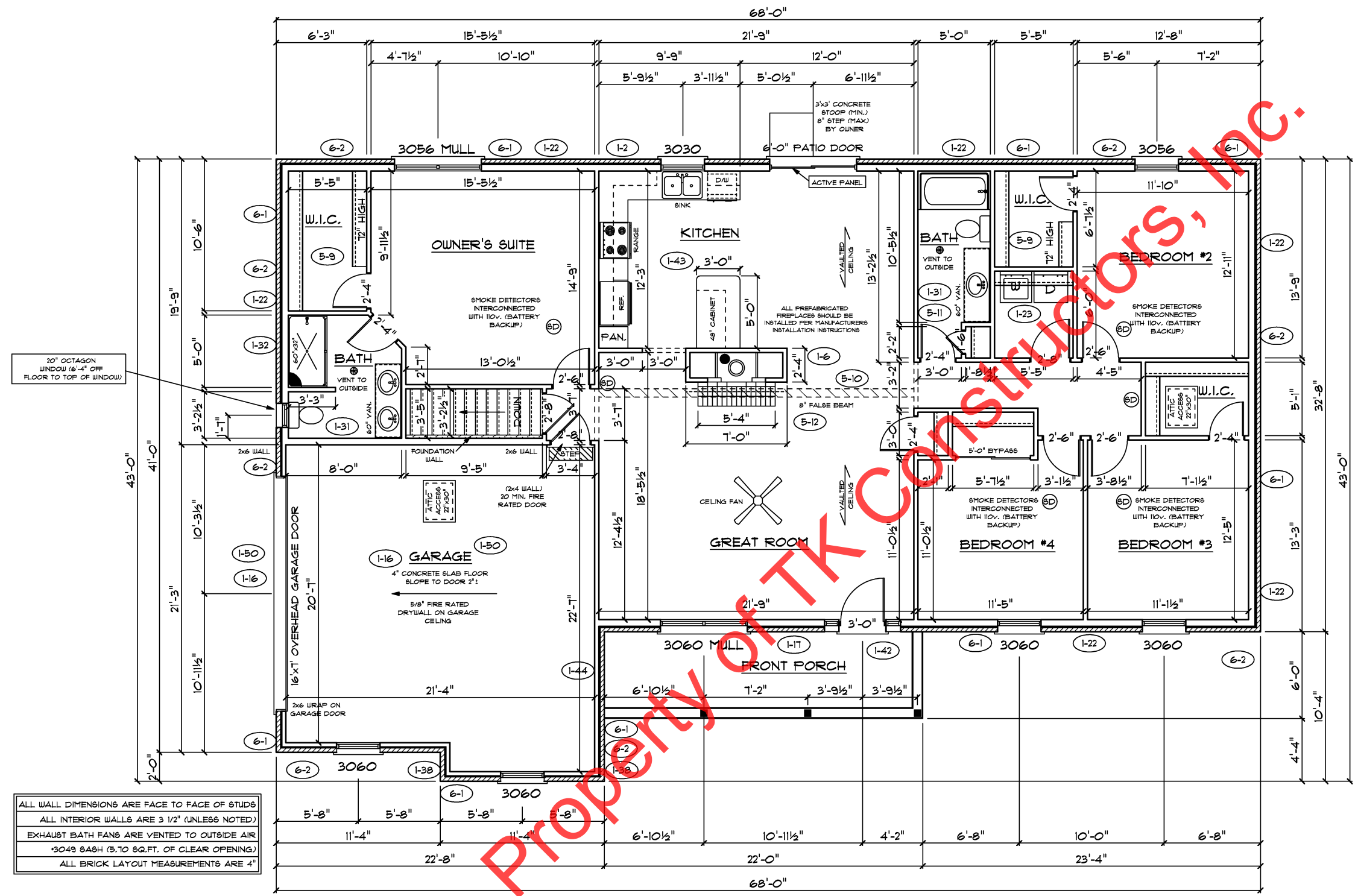
ANDERSEN WINDOW SCHEDULE - 200 SERIES -

ANDERSEN MODEL NO.	R.O. SIZE
3030	36" x 36"
3040	36" x 48"
3049*	36" x 51"
3056*	36" x 66"
3060*	36" x 72"
3049 MULL*	73" x 51"
3056 MULL*	73" x 66"
3060 MULL*	73" x 72"

ANDERSEN SLIDING DOOR R.O. 72 3/4" x 82 1/8"
3'-0" FRONT DOOR R.O. 38 3/8" x 82 1/2"
3'-0" FRONT DOOR WITH (1) SIDELITE R.O. 51 7/8" x 82 1/2"
3'-0" FRONT DOOR WITH (2) SIDELITES R.O. 65 3/8" x 82 1/2"
R.O. FOR BI-FOLD DOORS USING DRYWALL JAMB FACING = 1 1/4" + DOOR SIZE x (81 1/2")
R.O. FOR BYPASS DOORS USING DRYWALL JAMB FACING MAKE SAME AS BOTH DOORS ADDED TOGETHER
ALL INTERIOR DOORS SIZE + 2" TO WIDTH x 82 1/2" HIGH
R.O. POCKET DOOR (2x DOOR WIDTH + 1") x 85" HIGH

9'-0" FIRST FLOOR
 CEILING HEIGHT (1-40)

INCLUDES:	
1.	4 1/4" BASEBOARDS IN LIEU OF 3 1/4"
2.	3060 WINDOWS IN LIEU OF 3056 WINDOWS
3.	3056 WINDOWS IN LIEU OF 3049 WINDOWS
4.	DRYWALL WRAPPED OPENINGS 12" TALLER
5.	30" KITCHEN CABINETS STANDARD
6.	16'xT' GARAGE DOOR STANDARD



Property of TK Constructors, Inc.