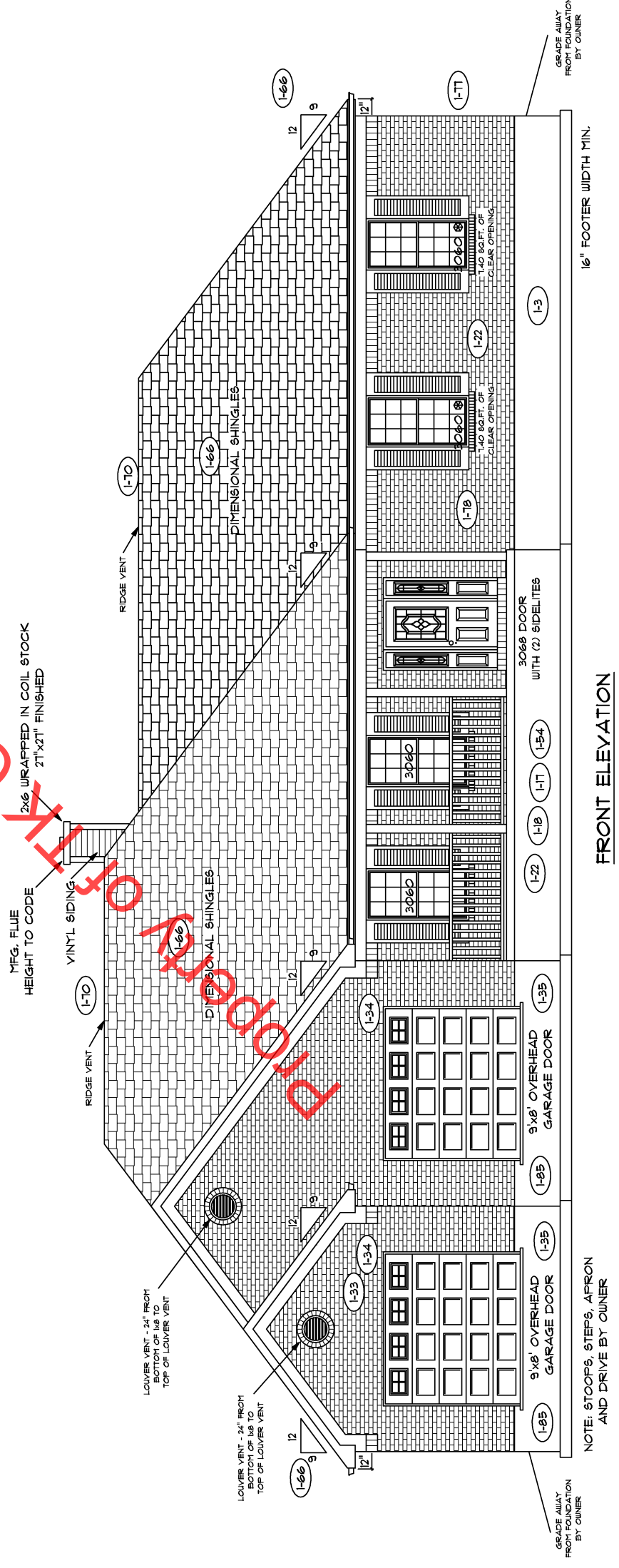


REAR ELEVATION

NOTE: STOOPS, STEPS, APRON AND DRIVE BY OWNER



FRONT ELEVATION

NOTE: STOOPS, STEPS, APRON AND DRIVE BY OWNER

TK Constructors, Inc.

FLOOR PLAN

TOTAL LIVING SQ.FT.	2,622
GARAGE	687
TOTAL SQ.FT.	3,309
EXCLUDING FRONT PORCH	144
EXCLUDING REAR PORCH	168

**ANDERSEN WINDOW SCHEDULE
- 200 SERIES -**

ANDERSEN MODEL NO.	R.O. SIZE
3030	36" x 36"
3040	36" x 48"
3049*	36" x 51"
3056*	36" x 66"
3060*	36" x 72"
3049 MULL*	73" x 51"
3056 MULL*	73" x 66"
3060 MULL*	73" x 72"

ANDERSEN SLIDING DOOR
R.O. 72 3/4" x 82 7/8"

3'-0" FRONT DOOR
R.O. 38 3/8" x 82 1/2"

3'-0" FRONT DOOR WITH (1) SIDELITE
R.O. 51 7/8" x 82 1/2"

3'-0" FRONT DOOR WITH (2) SIDELITES
R.O. 65 3/8" x 82 1/2"

R.O. FOR BI-FOLD DOORS USING DRYWALL JAMB FACING + 1 1/4" + DOOR SIZE x (8 1/2")

R.O. FOR BYPASS DOORS USING DRYWALL JAMB FACING MAKE SAME AS BOTH DOORS ADDED TOGETHER

ALL INTERIOR DOORS
SIZE + 2" TO WIDTH x 82 1/2" HIGH

R.O. POCKET DOOR
(2x DOOR WIDTH + 1") x 85" HIGH

* - DENOTES OPENING MEETS EGRESS REQUIREMENTS

**9'-0" FIRST FLOOR
CEILING HEIGHT (I-T)**

INCLUDES:	
1.	4 1/4" BASEBOARDS IN LIEU OF 3 1/4"
2.	3060 WINDOWS IN LIEU OF 3056 WINDOWS
3.	3056 WINDOWS IN LIEU OF 3049 WINDOWS
4.	DRYWALL WRAPPED OPENINGS 12" TALLER
5.	42" KITCHEN CABINETS (I-TB)
6.	9'x8' GARAGE DOORS (I-B5)

