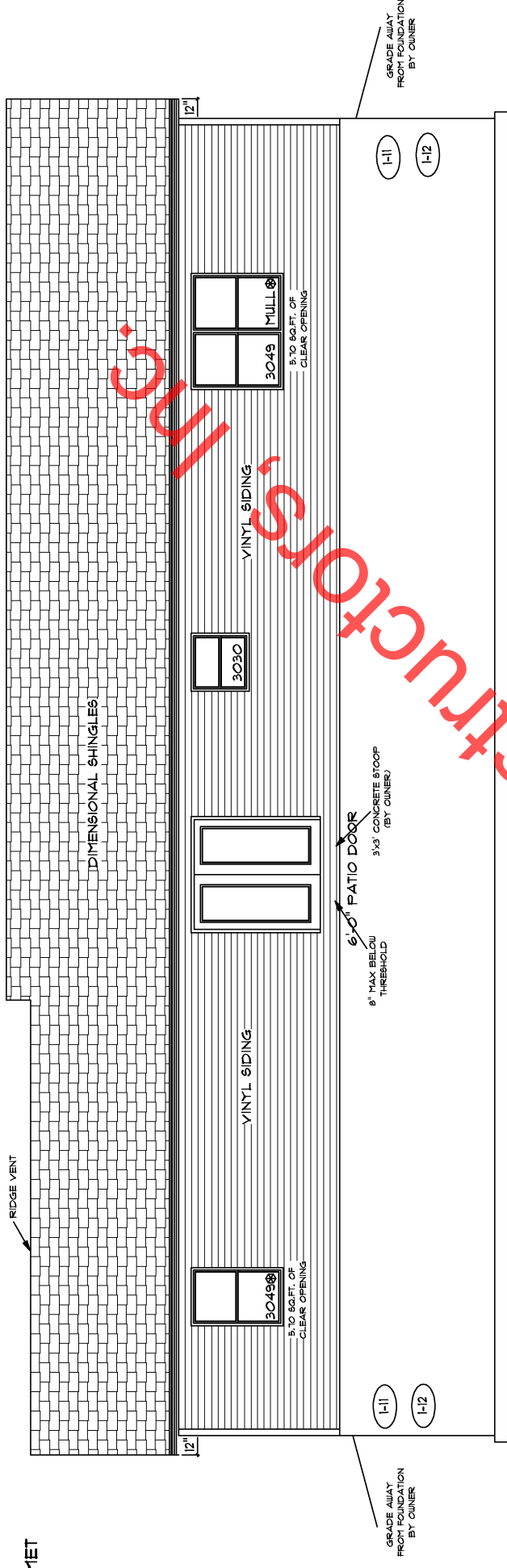


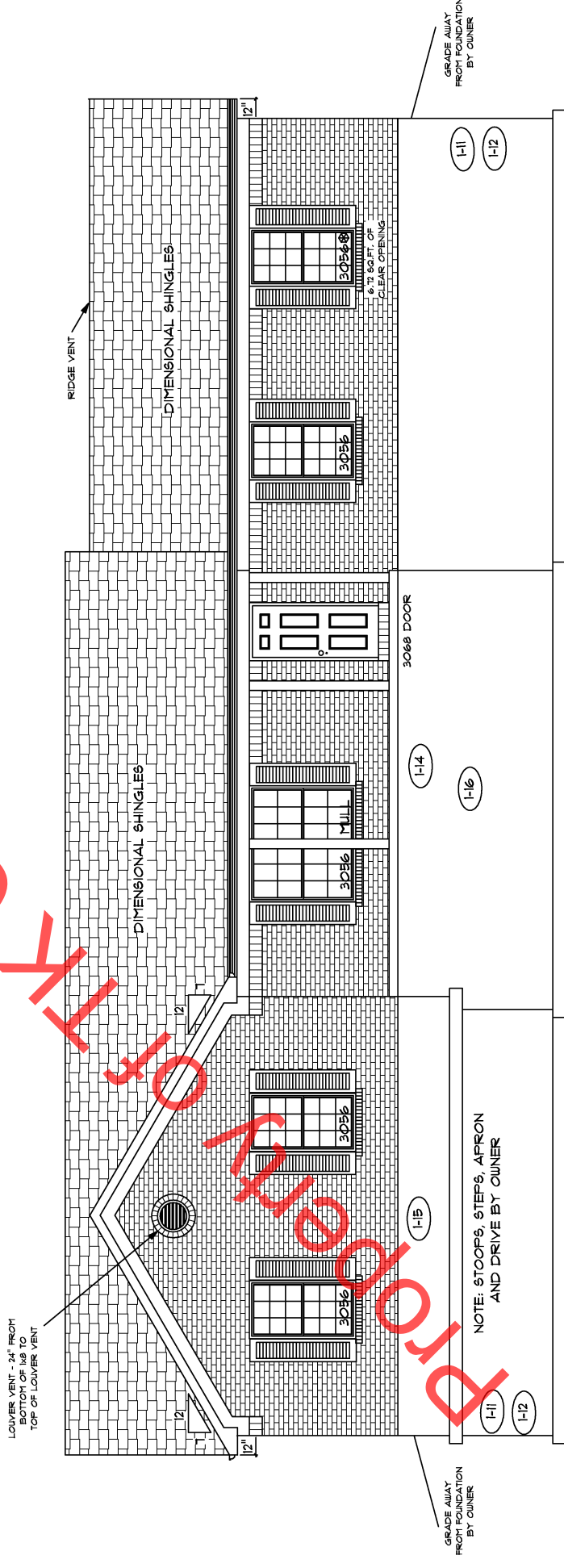
NOTE: OHIO ENERGY CODE COMPLIANCE WILL BE MET USING OHBA PRESCRIPTIVE METHOD WITH COMPLIANCE PATH # 1.



REAR ELEVATION

18" FOOTER WIDTH MIN.

NOTE: STOOPS, STEPS, APRON AND DRIVE BY OWNER

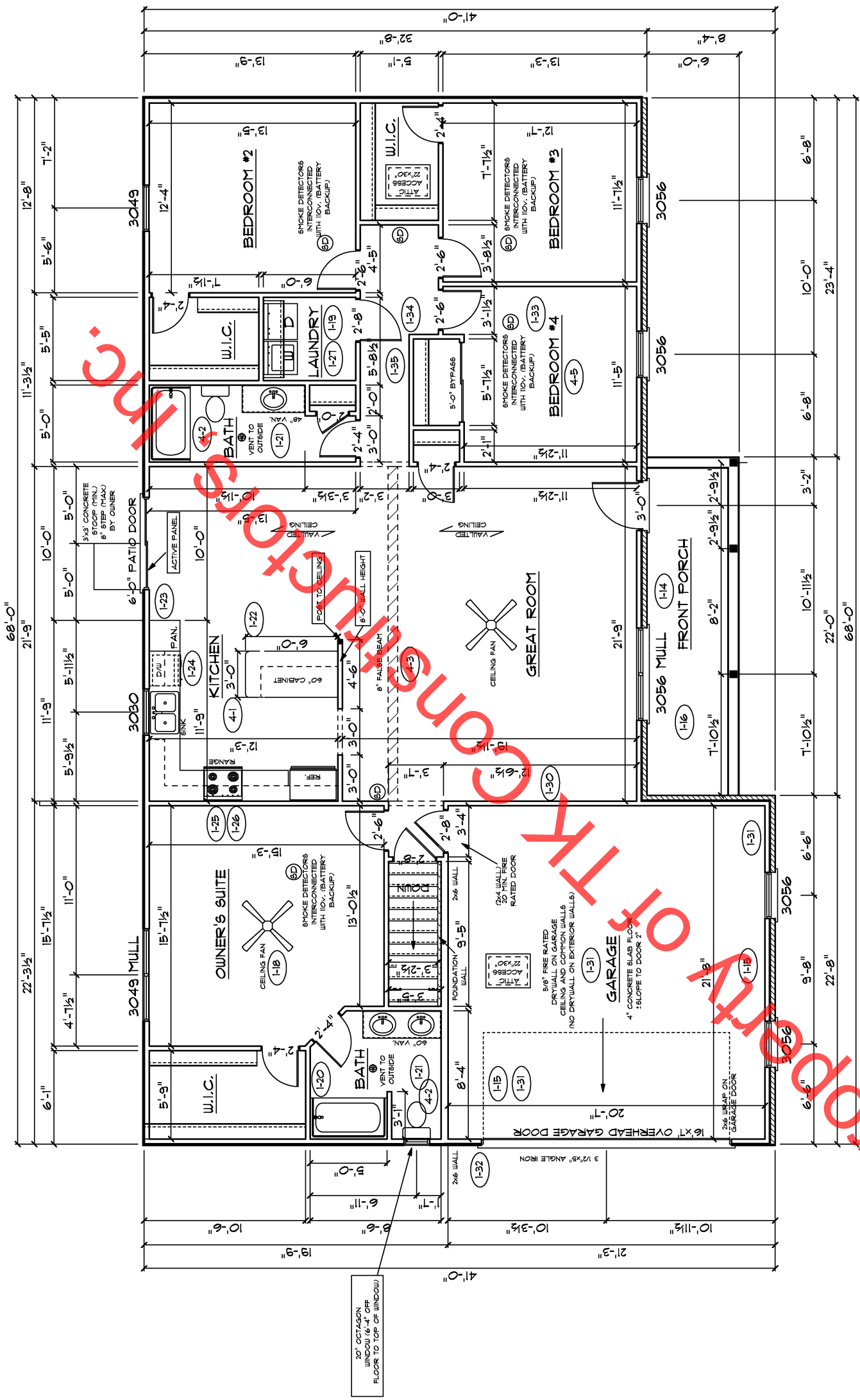


FRONT ELEVATION

18" FOOTER WIDTH MIN.

NOTE: STOOPS, STEPS, APRON AND DRIVE BY OWNER

LOWERS VENT - 24" FROM BOTTOM OF I-8 TO TOP OF LOUVER VENT



FLOOR PLAN

| | |
|---------------------|------|
| Total Living Sq.ft. | 1935 |
| Garage | 473 |
| Total Sq.ft. | 2408 |
| Excluding Porch | 132 |

| ANDERSEN WINDOW SCHEDULE | |
|--|-----------|
| - 200 SERIES - | |
| ANDERSEN MODEL NO. | R.O. SIZE |
| 3030 | 36" x 36" |
| 3040 | 36" x 48" |
| 3049* | 36" x 51" |
| 3056* | 36" x 66" |
| 3060* | 36" x 72" |
| 3049 MULL* | 73" x 51" |
| 3056 MULL* | 73" x 66" |
| 3060 MULL* | 73" x 72" |
| ANDERSEN SLIDING DOOR R.O. 72 3/4" x 82 1/8" | |
| 3'-0" FRONT DOOR R.O. 38 3/8" x 82 1/2" | |
| 3'-0" FRONT DOOR WITH (1) SIDELITE R.O. 51 7/8" x 82 1/2" | |
| 3'-0" FRONT DOOR WITH (2) SIDELITES R.O. 65 3/8" x 82 1/2" | |
| R.O. FOR BI-FOLD DOORS USING DRYWALL JAMB FACING = 1 1/4" + DOOR SIZE x (8 1/2") | |
| R.O. FOR BYPASS DOORS USING DRYWALL JAMB FACING MAKE SAME AS BOTH DOORS ADDED TOGETHER | |
| ALL INTERIOR DOORS SIZE + 2" TO WIDTH x 82 1/2" HIGH | |
| R.O. POCKET DOOR (2x DOOR WIDTH + 1") x 85" HIGH | |

* - DENOTES OPENING MEETS EGRESS REQUIREMENTS

ALL WALL DIMENSIONS ARE FACE TO FACE OF STUDS
ALL INTERIOR WALLS ARE 3 1/2" (UNLESS NOTED)
EXHAUST BATH FANS ARE VENTED TO OUTSIDE AIR
5049 84SH (8'-10 SQ.FT. OF CLEAR OPENING)
ALL BRICK LAYOUT MEASUREMENTS ARE 4"