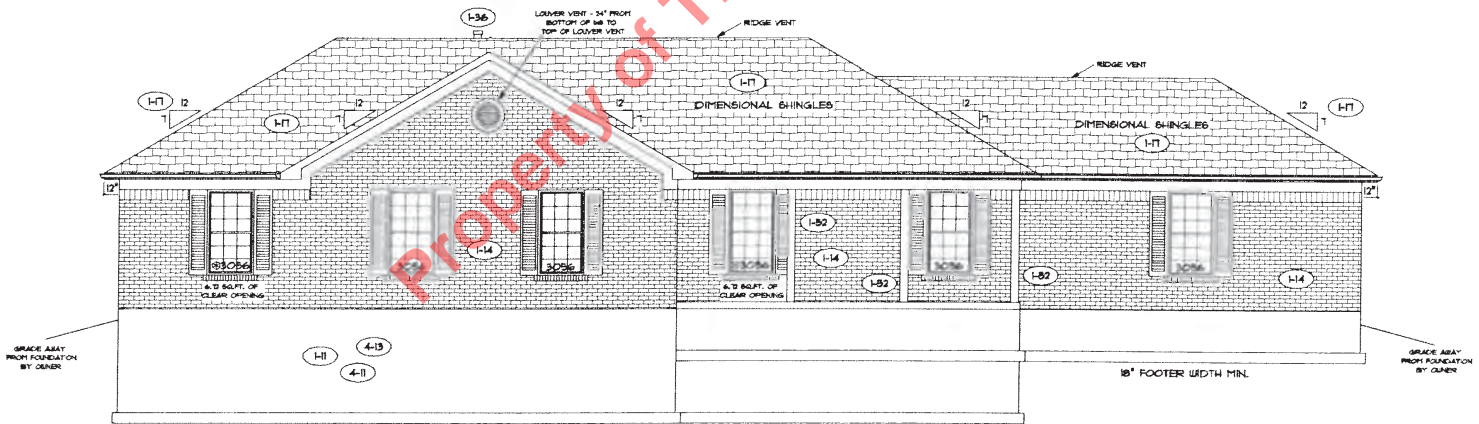


REAR ELEVATION



FRONT ELEVATION

Property of TK Constructors, INC

FLOOR PLAN

| | |
|---------------------|-------|
| TOTAL LIVING SQ.FT. | 1,959 |
| GARAGE | 499 |
| TOTAL SQ.FT. | 2,458 |
| EXCLUDING PORCH | 132 |
| EXCLUDING REAR DECK | 196 |

ANDERSEN WINDOW SCHEDULE
- 200 SERIES -

| ANDERSEN MODEL NO. | R.O. SIZE |
|--|-----------|
| 3030 | 36" x 36" |
| 3040 | 36" x 48" |
| 3049 | 36" x 51" |
| 3056 | 36" x 66" |
| 3060 | 36" x 72" |
| 3043 MULL. | 73" x 51" |
| 3056 MULL. | 73" x 66" |
| 3060 MULL. | 73" x 72" |
| ANDERSEN SLIDING DOOR R.O. 72 3/4" x 82 7/8" | |
| 3'-0" FRONT DOOR R.O. 36 3/8" x 82 1/2" | |
| 3'-0" FRONT DOOR WITH (1) SIDELITE R.O. 51 7/8" x 82 1/2" | |
| 3'-0" FRONT DOOR WITH (2) SIDELITES R.O. 65 3/8" x 82 1/2" | |
| R.O. FOR BI-FOLD DOORS USING DRYWALL JAMB FACING = 1/4" + DOOR SIZE | |
| R.O. FOR BYPASS DOORS USING DRYWALL JAMB FACING MAKE SAME AS BOTH DOORS ADDED TOGETHER | |
| ALL INTERIOR DOORS SIZE = 2" TO WIDTH + 82 1/2" HIGH | |
| R.O. POCKET DOOR (2" DOOR WIDTH + 7") x 85" HIGH | |

* DENOTES OPENING MEETS
EGRESS REQUIREMENTS

ALL WALL DIMENSIONS ARE FACE TO FACE OF STUD
ALL INTERIOR WALLS ARE 5 1/2" (UNLESS NOTED)
EXHAUST BATH FANS ARE VENTED TO OUTSIDE AIR
EGRESS BATH IS TO BE 1" OF CLEAR OPENING
ALL BRICK LAYOUT MEASUREMENTS ARE 4"

