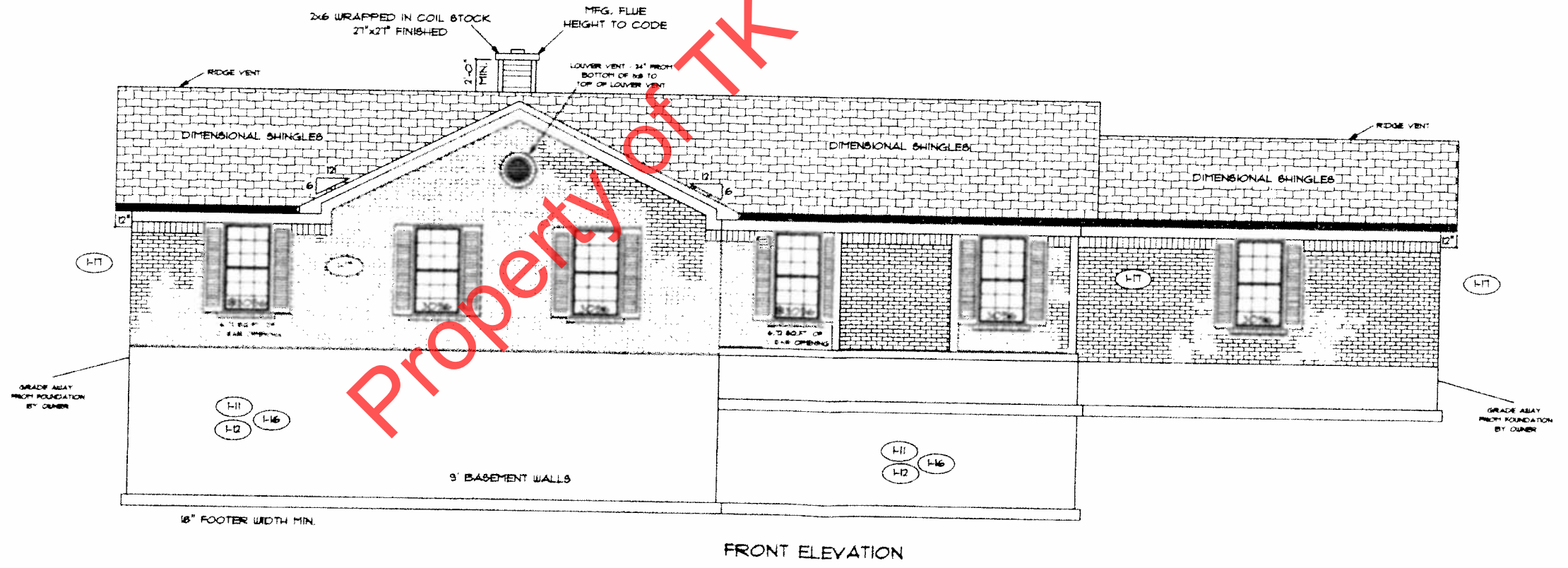


REAR ELEVATION



FRONT ELEVATION

PAGE NO. **1B**

ADDENDUM 1

VER. 021710

DRAWING BY: RLC

1/8" = 1'

TK CONSTRUCTORS

DATE: August 14, 2013

JOB NO.: 111-13-0021

TK CONSTRUCTORS

RALEIGH

NUS

FLOOR PLAN

| | |
|---------------------|-------|
| TOTAL LIVING SQ.FT. | 1,763 |
| GARAGE | 499 |
| TOTAL SQ.FT. | 2,262 |
| EXCLUDING PORCH | 132 |

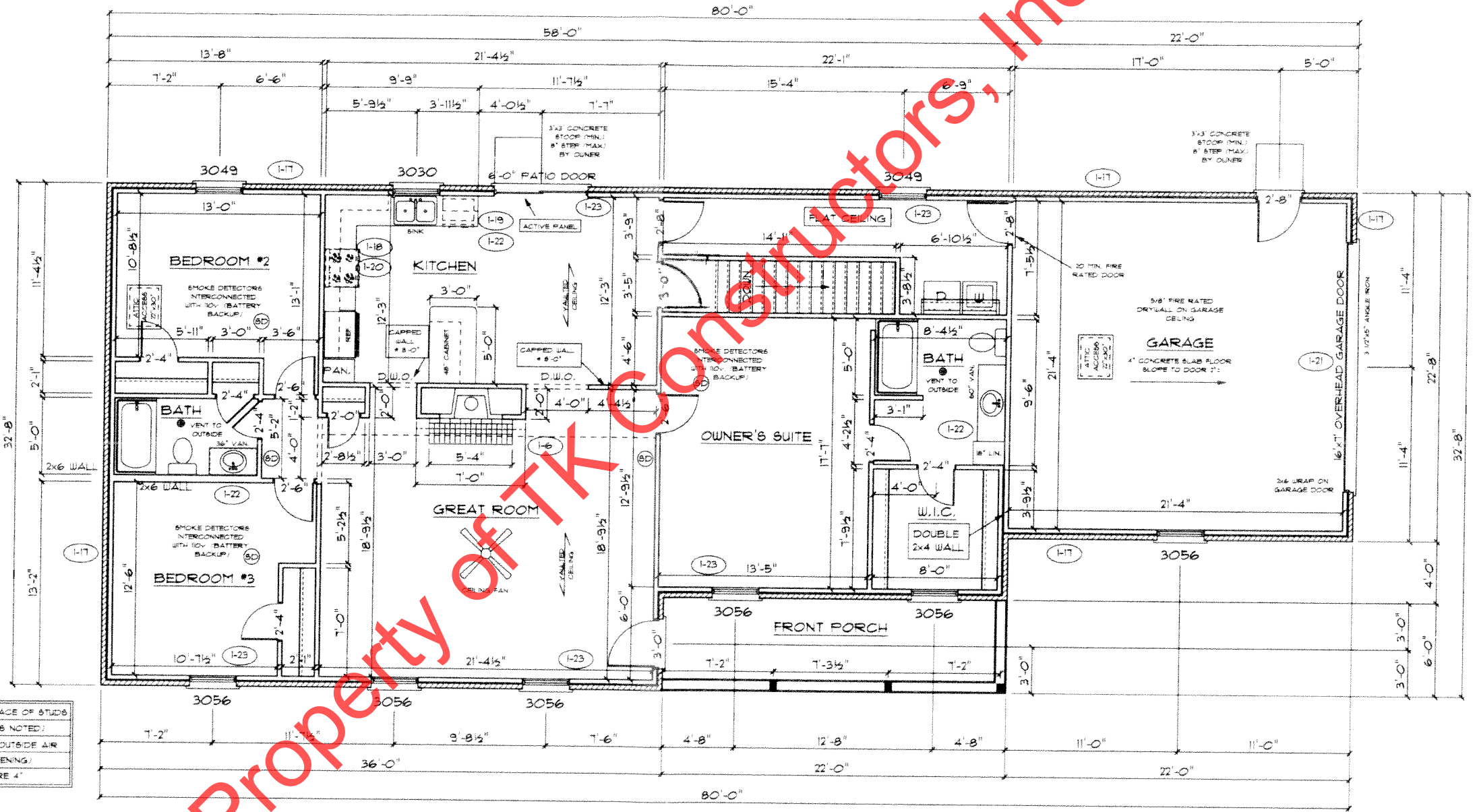
ANDERSEN WINDOW SCHEDULE - 200 SERIES -

| ANDERSEN MODEL NO. | R.O. SIZE |
|--------------------|-----------|
| 3030 | 36" x 36" |
| 3040 | 36" x 48" |
| 3049* | 36" x 51" |
| 3056* | 36" x 66" |
| 3060* | 36" x 72" |
| 3049 MULL* | 13" x 51" |
| 3056 MULL* | 13" x 66" |
| 3060 MULL* | 13" x 72" |

| ANDERSEN SLIDING DOOR | R.O. 12 3/4" x 82 7/8" |
|--------------------------------------|--|
| 3'-0" FRONT DOOR | R.O. 36 3/8" x 82 1/2" |
| 3'-0" FRONT DOOR WITH (1) SIDELITE | R.O. 51 7/8" x 82 1/2" |
| 3'-0" FRONT DOOR WITH (2) SIDELITES | R.O. 65 3/8" x 82 1/2" |
| R.O. FOR BI-FOLD DOORS USING DRYWALL | JAMB FACING = 1 1/4" • DOOR SIZE x (81 1/2") |
| R.O. FOR BYPASS DOORS USING DRYWALL | JAMB FACING MAKE SAME AS BOTH DOORS ADDED TOGETHER |
| ALL INTERIOR DOORS | SIZE = 2" TO WIDTH x 82 1/2" HIGH |
| R.O. POCKET DOOR | (2x DOOR WIDTH + 1") x 85" HIGH |

* - DENOTES OPENING MEETS EGRESS REQUIREMENTS

ALL WALL DIMENSIONS ARE FACE TO FACE OF STUDS
 ALL INTERIOR WALLS ARE 3 1/2" (UNLESS NOTED)
 EXHAUST BATH FANS ARE VENTED TO OUTSIDE AIR
 *3049 BATH (5 TO 60 FT. OF CLEAR OPENING)
 ALL BRICK LAYOUT MEASUREMENTS ARE 4"



WMS