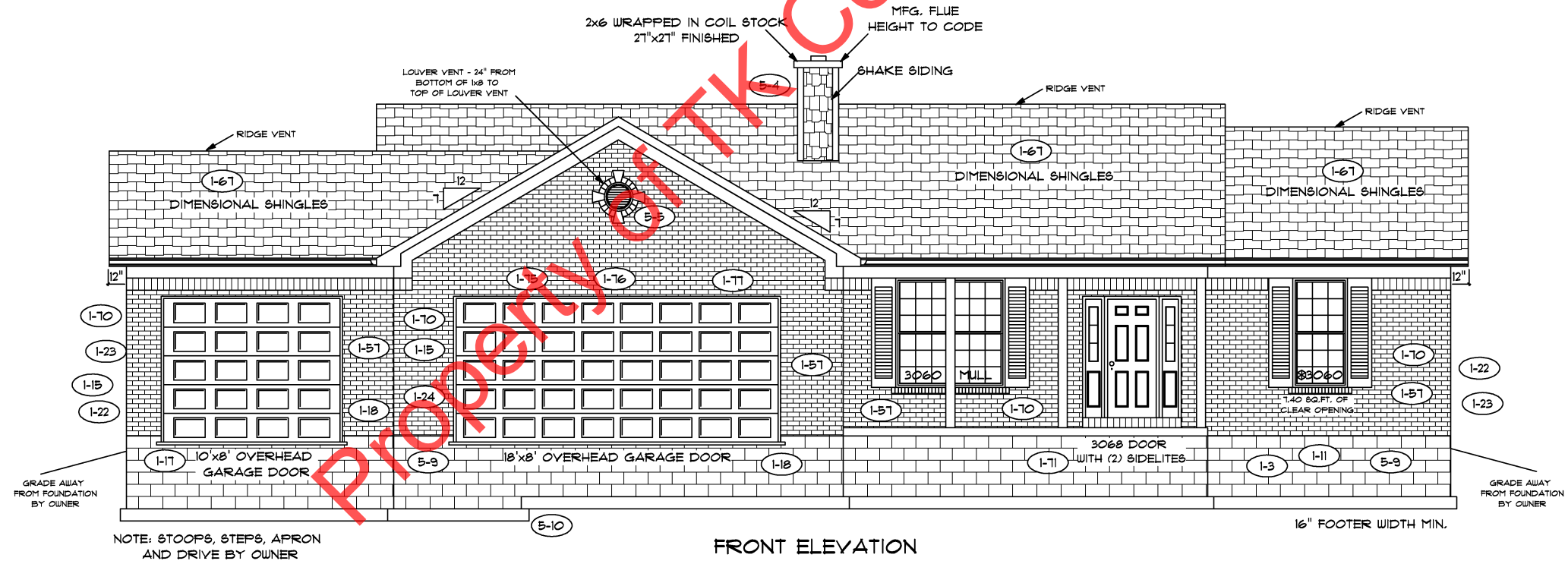


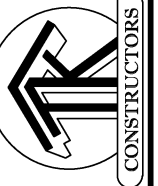
REAR ELEVATION

NOTE: STOOPS, STEPS, APRON AND DRIVE BY OWNER



FRONT ELEVATION

NOTE: STOOPS, STEPS, APRON AND DRIVE BY OWNER



FLOOR PLAN

TOTAL LIVING SQ.FT.	1,781
GARAGE	1,015
TOTAL SQ.FT.	2,796
EXCLUDING PORCH	120

ANDERSEN WINDOW SCHEDULE - 200 SERIES - (1-12)

ANDERSEN MODEL NO.	R.O. SIZE
3030	36" x 36"
3040	36" x 48"
3049*	36" x 57"
3056*	36" x 66"
3060*	36" x 72"
3049 MULL*	73" x 57"
3056 MULL*	73" x 66"
3060 MULL*	73" x 72"

ANDERSEN SLIDING DOOR
R.O. 72 3/4" x 82 1/8"

3'-0" FRONT DOOR
R.O. 38 3/8" x 82 1/2"

3'-0" FRONT DOOR WITH (1) SIDELITE
R.O. 51 7/8" x 82 1/2"

3'-0" FRONT DOOR WITH (2) SIDELITES
R.O. 65 3/8" x 82 1/2"

R.O. FOR BI-FOLD DOORS USING DRYWALL JAMB FACING = 1 1/4" + DOOR SIZE x (81 1/2")

R.O. FOR BYPASS DOORS USING DRYWALL JAMB FACING MAKE SAME AS BOTH DOORS ADDED TOGETHER

ALL INTERIOR DOORS
SIZE + 2" TO WIDTH x 82 1/2" HIGH

R.O. POCKET DOOR
(2x DOOR WIDTH + 1") x 85" HIGH

* - DENOTES OPENING MEETS EGRESS REQUIREMENTS

9'-0" FIRST FLOOR CEILING HEIGHT (1-22)

INCLUDES:

- 4 1/4" BASEBOARDS IN LIEU OF 3 1/4"
- 3060 WINDOWS IN LIEU OF 3056 WINDOWS
- 3056 WINDOWS IN LIEU OF 3049 WINDOWS
- DRYWALL WRAPPED OPENINGS 12" TALLER
- 42" KITCHEN CABINETS (1-65)
- 18'x8' / 10'-8" GARAGE DOORS (1-75) (1-71)

ALL WALL DIMENSIONS ARE FACE TO FACE OF STUDS
ALL INTERIOR WALLS ARE 3 1/2" (UNLESS NOTED)
EXHAUST BATH FANS ARE VENTED TO OUTSIDE AIR
3049 BASH (5.70 SQ.FT. OF CLEAR OPENING)
ALL BRICK LAYOUT MEASUREMENTS ARE 4"

