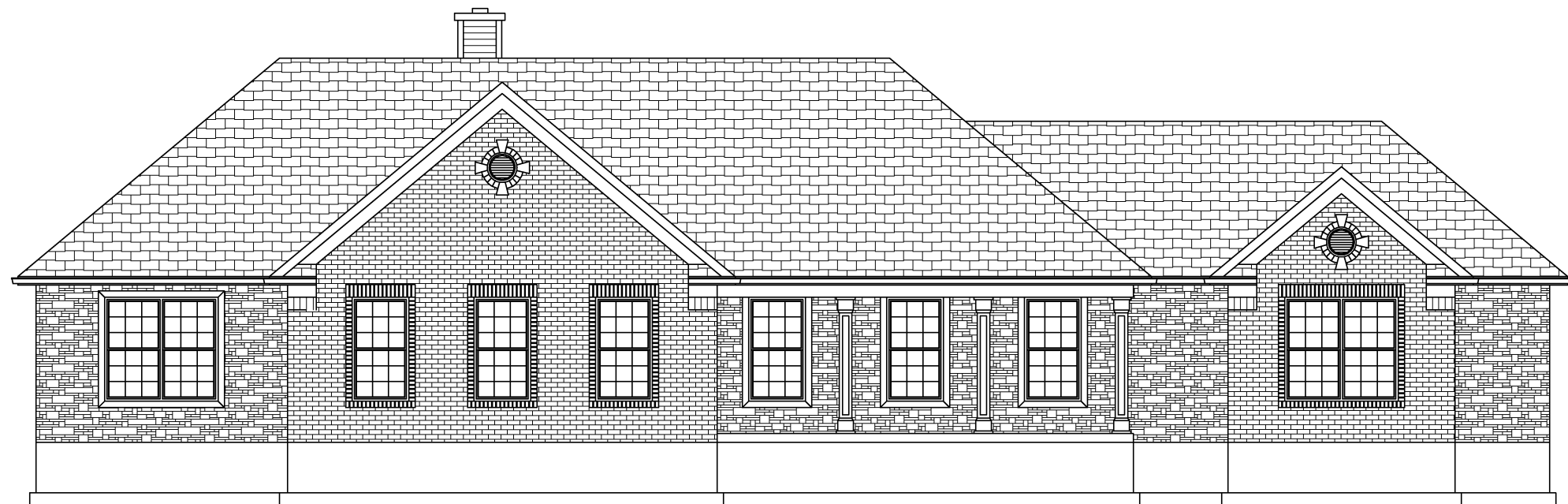


1. ADDITIONAL SQ.FT. ADDED TO RALEIGH
- LIVING SQ.FT. 45, GARAGE 24
2. HIP ROOF ADDED TO HOME - 9/12 SIDE
PLANES, 7/12 FRONT AND BACK
3. ADDED (1) GABLE TO GARAGE
4. FYPON WRAPPED PORCH POSTS
- CWKT86005 / 8" SHAFT
5. WINDOWS TRIMMED WITH BRICK ROWLOCK
6. ADDITIONAL WINDOW ADDED ON
GARAGE
7. GABLE RETURNS ON (2) GABLES
8. SIDE ENTRY GARAGE
9. ADDITIONAL WINDOW ADDED TO GREAT ROOM
10. 8'-0" FLAT CEILINGS (NO VAULT)



RALEIGH ELITE

FLOOR PLAN

TOTAL LIVING SQ.FT.	1,808
GARAGE	523
TOTAL SQ.FT.	2,331
EXCLUDING PORCH	132

ANDERSEN WINDOW SCHEDULE
- 200 SERIES -

ANDERSEN MODEL NO.	R.O. SIZE
3030	36" x 36"
3040	36" x 48"
3049*	36" x 51"
3056*	36" x 66"
3060*	36" x 72"
3049 MULL*	73" x 51"
3056 MULL*	73" x 66"
3060 MULL*	73" x 72"

ANDERSEN SLIDING DOOR R.O. T2 3/4" x 82 1/8"
3'-0" FRONT DOOR R.O. 38 3/8" x 82 1/2"
3'-0" FRONT DOOR WITH (1) SIDELITE R.O. 51 7/8" x 82 1/2"
3'-0" FRONT DOOR WITH (2) SIDELITES R.O. 65 3/8" x 82 1/2"
R.O. FOR BI-FOLD DOORS USING DRYWALL JAMB FACING = 1 1/4" + DOOR SIZE x (81 1/2")
R.O. FOR BYPASS DOORS USING DRYWALL JAMB FACING MAKE SAME AS BOTH DOORS ADDED TOGETHER
ALL INTERIOR DOORS SIZE + 2" TO WIDTH x 82 1/2" HIGH
R.O. POCKET DOOR (2x DOOR WIDTH + 1") x 85" HIGH

* - DENOTES OPENING MEETS
EGRESS REQUIREMENTS

ALL WALL DIMENSIONS ARE FACE TO FACE OF STUDS
ALL INTERIOR WALLS ARE 3/2" (UNLESS NOTED)
EXHAUST BATH FANS ARE VENTED TO OUTSIDE AIR
*3049 SASH (5.70 SQ.FT. OF CLEAR OPENING)
ALL BRICK LAYOUT MEASUREMENTS ARE 4"

