

PRINCETON STANDARD OPTIONS

DIRECT VENT FIREPLACE

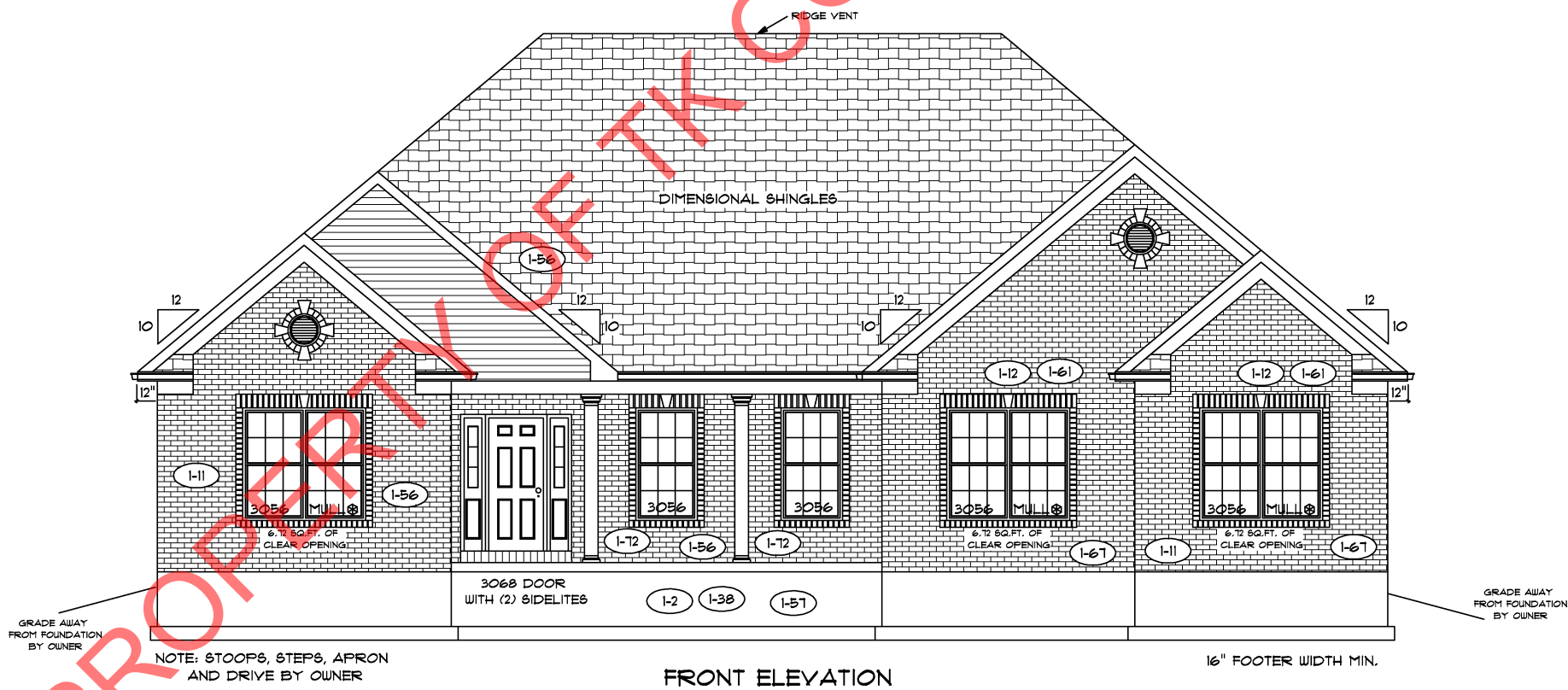
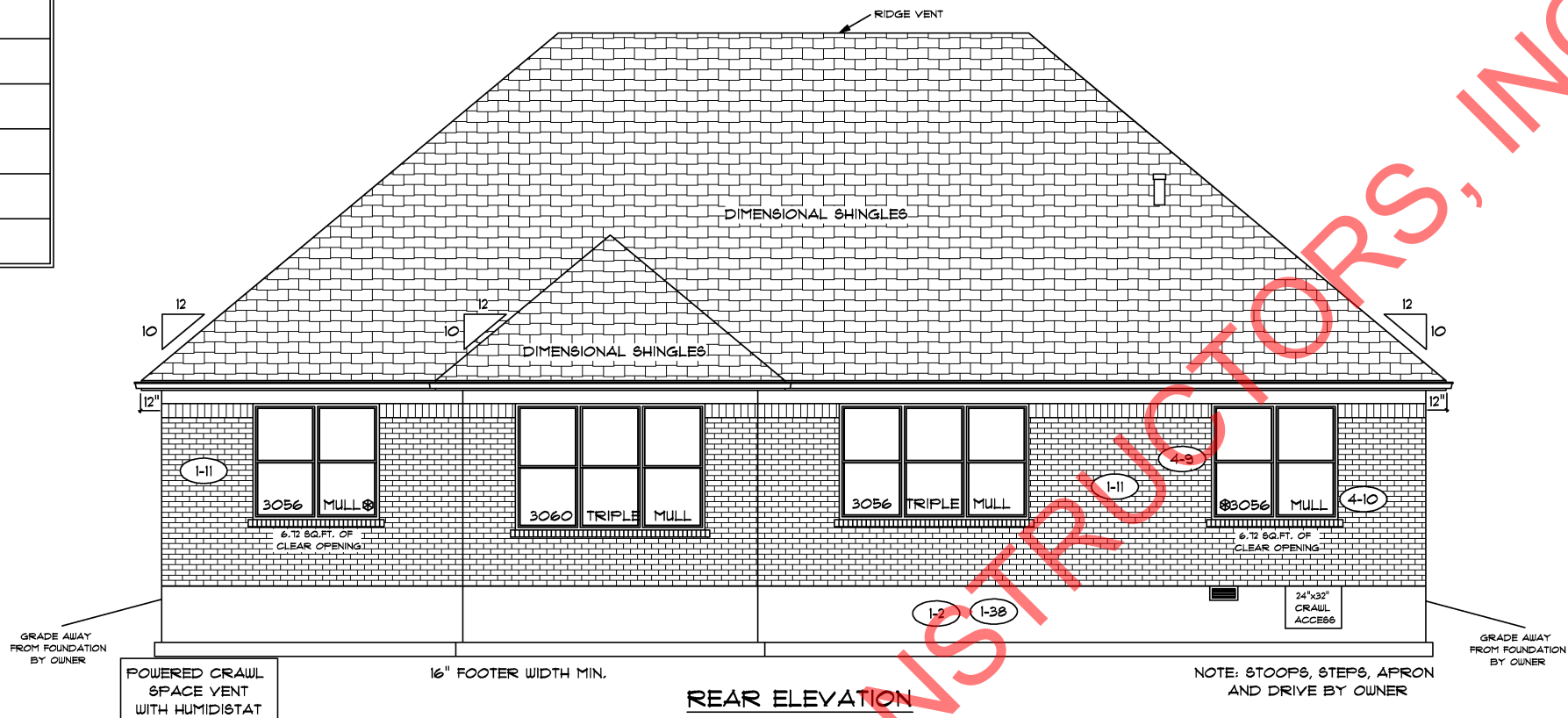
9'-0" FIRST FLOOR CEILING HEIGHT

10/12 HIP ROOF

SCHROCK RAISED PANEL OAK CABINETS

42" WALL CABINETS IN KITCHEN

LEVEL 2 CARPET



FLOOR PLAN

TOTAL LIVING SQ.FT.	2,120
GARAGE	697
TOTAL SQ.FT.	2,817
EXCLUDING PORCH	105

ANDERSEN WINDOW SCHEDULE - 200 SERIES - (1-16)

ANDERSEN MODEL NO.	R.O. SIZE
3030	36" x 36"
3040	36" x 48"
3049*	36" x 51"
3056*	36" x 66"
3060*	36" x 72"
3049 MULL*	73" x 51"
3056 MULL*	73" x 66"
3060 MULL*	73" x 72"

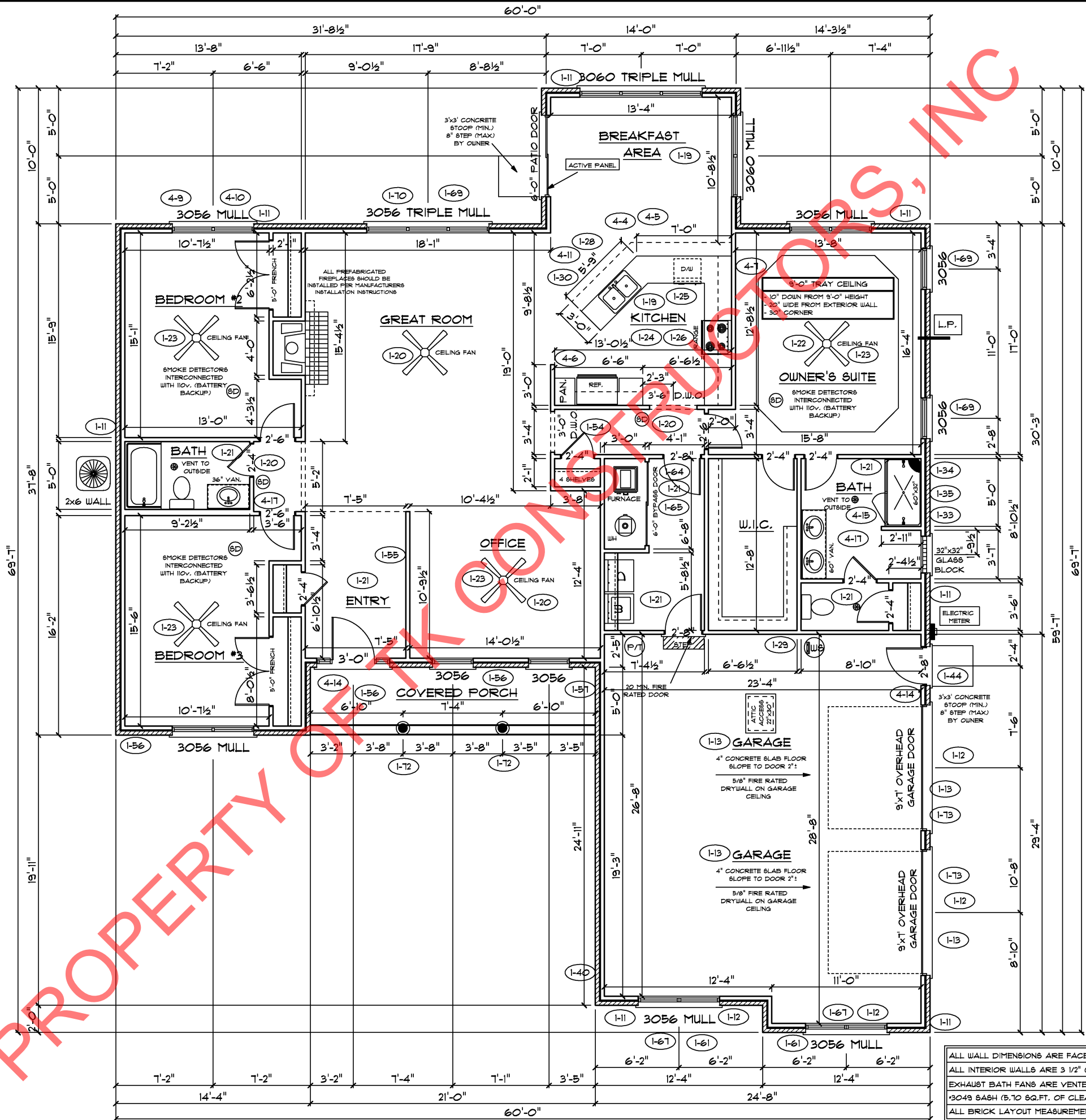
ANDERSEN SLIDING DOOR R.O. 72 3/4" x 82 1/8"
3'-0" FRONT DOOR R.O. 38 3/8" x 82 1/2"
3'-0" FRONT DOOR WITH (1) SIDELITE R.O. 51 7/8" x 82 1/2"
3'-0" FRONT DOOR WITH (2) SIDELITES R.O. 65 3/8" x 82 1/2"
R.O. FOR BI-FOLD DOORS USING DRYWALL JAMB FACING = 1 1/4" + DOOR SIZE x (81 1/2")
R.O. FOR BYPASS DOORS USING DRYWALL JAMB FACING MAKE SAME AS BOTH DOORS ADDED TOGETHER
ALL INTERIOR DOORS SIZE + 2" TO WIDTH x 82 1/2" HIGH
R.O. POCKET DOOR (2x DOOR WIDTH + 1") x 85" HIGH

* - DENOTES OPENING MEETS EGRESS REQUIREMENTS

9'-0" FIRST FLOOR CEILING HEIGHT

INCLUDES:

1.	4 1/4" BASEBOARDS IN LIEU OF 3 1/4"
2.	42" KITCHEN CABINETS
3.	(2) 9'x1' GARAGE DOORS



ALL WALL DIMENSIONS ARE FACE TO FACE OF STUDS
 ALL INTERIOR WALLS ARE 3 1/2" (UNLESS NOTED)
 EXHAUST BATH FANS ARE VENTED TO OUTSIDE AIR
 *3049 SASH (5.70 SQ.FT. OF CLEAR OPENING)
 ALL BRICK LAYOUT MEASUREMENTS ARE 4"

