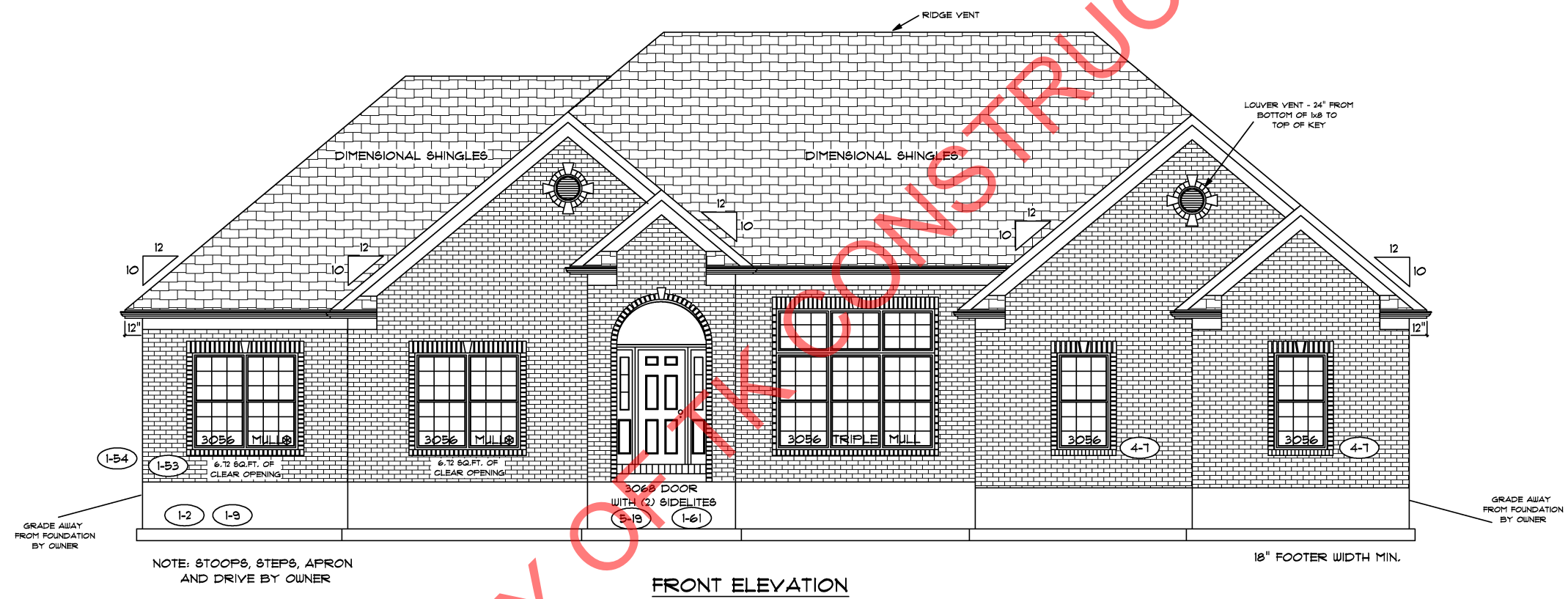


PRINCETON STANDARD OPTIONS
DIRECT VENT FIREPLACE
9'-0" FIRST FLOOR CEILING HEIGHT
10/12 HIP ROOF
6CHROCK RAISED PANEL OAK CABINETS
42" WALL CABINETS IN KITCHEN
LEVEL 2 CARPET



PROPERTY OF TK CONSTRUCTORS, INC

FLOOR PLAN

TOTAL LIVING SQ.FT.	2,448
GARAGE	549
TOTAL SQ.FT.	2,997
EXCLUDING PORCH	57

ANDERSEN WINDOW SCHEDULE - 200 SERIES -

ANDERSEN MODEL NO.	R.O. SIZE
3030	36" x 36"
3040	36" x 48"
3049*	36" x 57"
3056*	36" x 66"
3060*	36" x 72"
3049 MULL*	73" x 57"
3056 MULL*	73" x 66"
3060 MULL*	73" x 72"

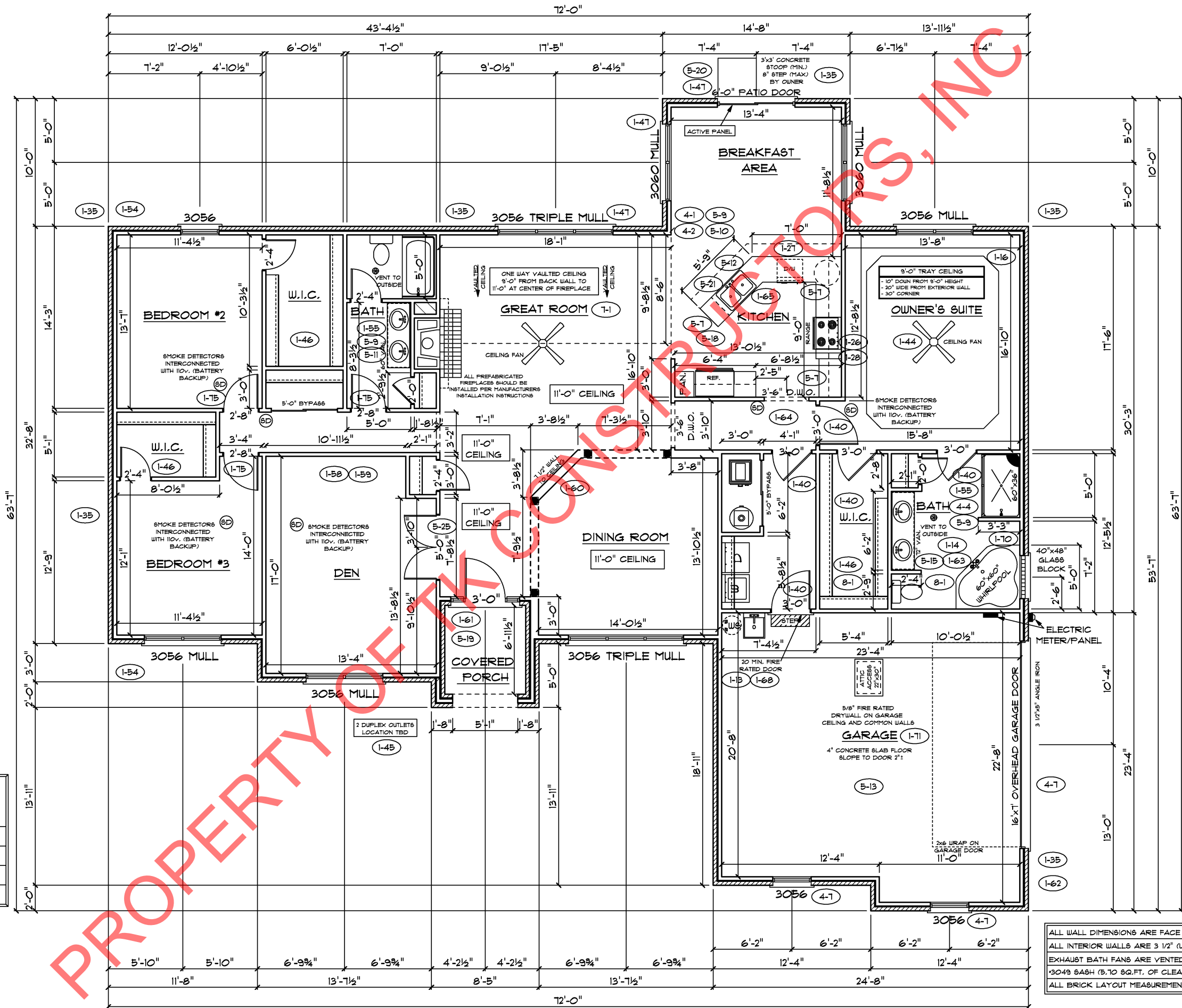
ANDERSEN SLIDING DOOR R.O. 72 3/4" x 82 1/8"
3'-0" FRONT DOOR R.O. 38 3/8" x 82 1/2"
3'-0" FRONT DOOR WITH (1) SIDELITE R.O. 51 7/8" x 82 1/2"
3'-0" FRONT DOOR WITH (2) SIDELITES R.O. 65 3/8" x 82 1/2"
R.O. FOR BI-FOLD DOORS USING DRYWALL JAMB FACING = 1 1/4" + DOOR SIZE x (81 1/2")
R.O. FOR BYPASS DOORS USING DRYWALL JAMB FACING MAKE SAME AS BOTH DOORS ADDED TOGETHER
ALL INTERIOR DOORS SIZE + 2" TO WIDTH x 82 1/2" HIGH
R.O. POCKET DOOR (2x DOOR WIDTH + 1") x 85" HIGH

* - DENOTES OPENING MEETS
EGRESS REQUIREMENTS

**9'-0" FIRST FLOOR
CEILING HEIGHT**

INCLUDES:
1. 4 1/4" BASEBOARDS IN LIEU OF 3 1/4"
2. 42" KITCHEN CABINETS
3. (2) 9'x7' GARAGE DOORS

DROP FRONT WINDOWS 8"
TO ALLOW FOR KEYSTONES



ALL WALL DIMENSIONS ARE FACE TO FACE OF STUDS
ALL INTERIOR WALLS ARE 3 1/2" (UNLESS NOTED)
EXHAUST BATH FANS ARE VENTED TO OUTSIDE AIR
*3049 SASH (5,70 SQ.FT. OF CLEAR OPENING)
ALL BRICK LAYOUT MEASUREMENTS ARE 4"