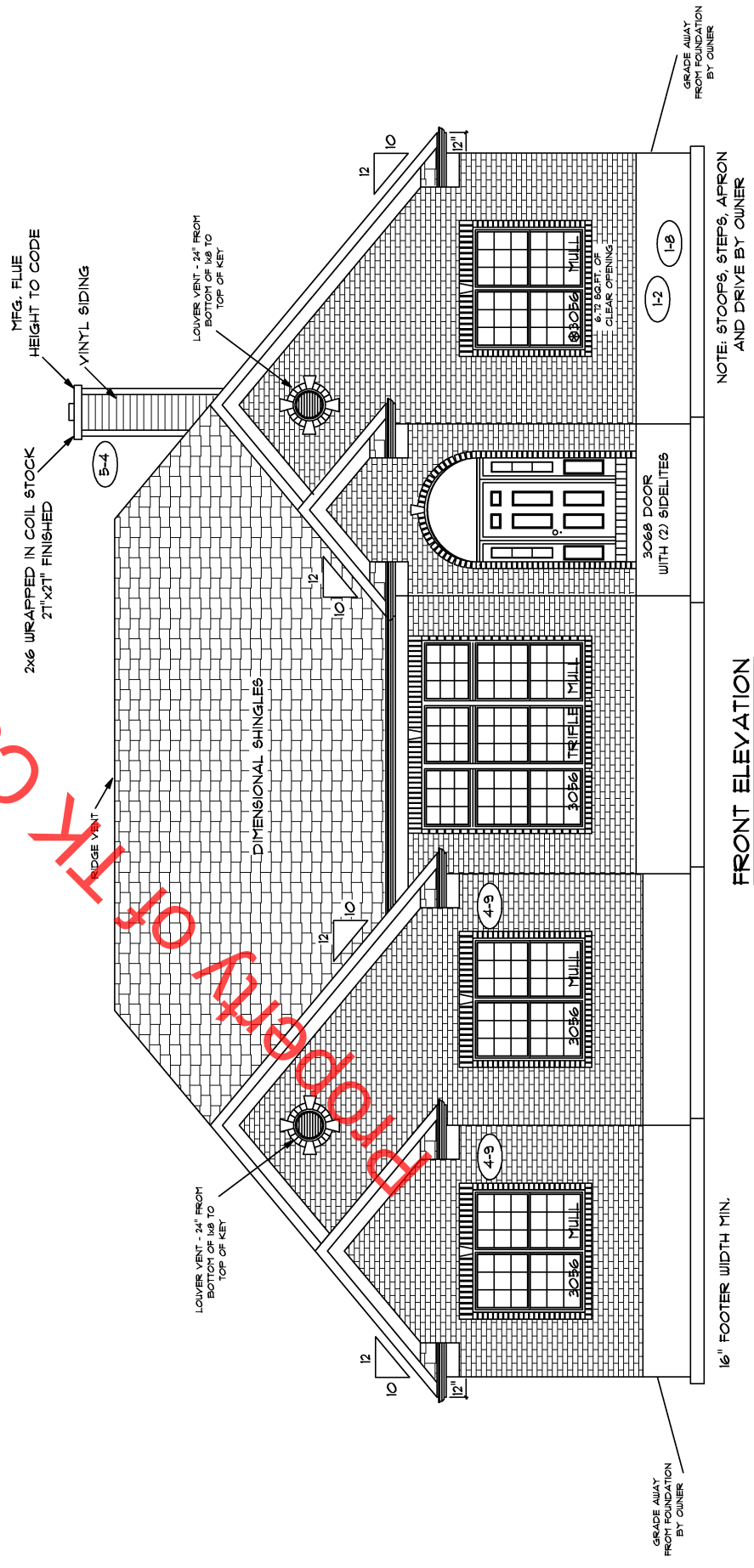
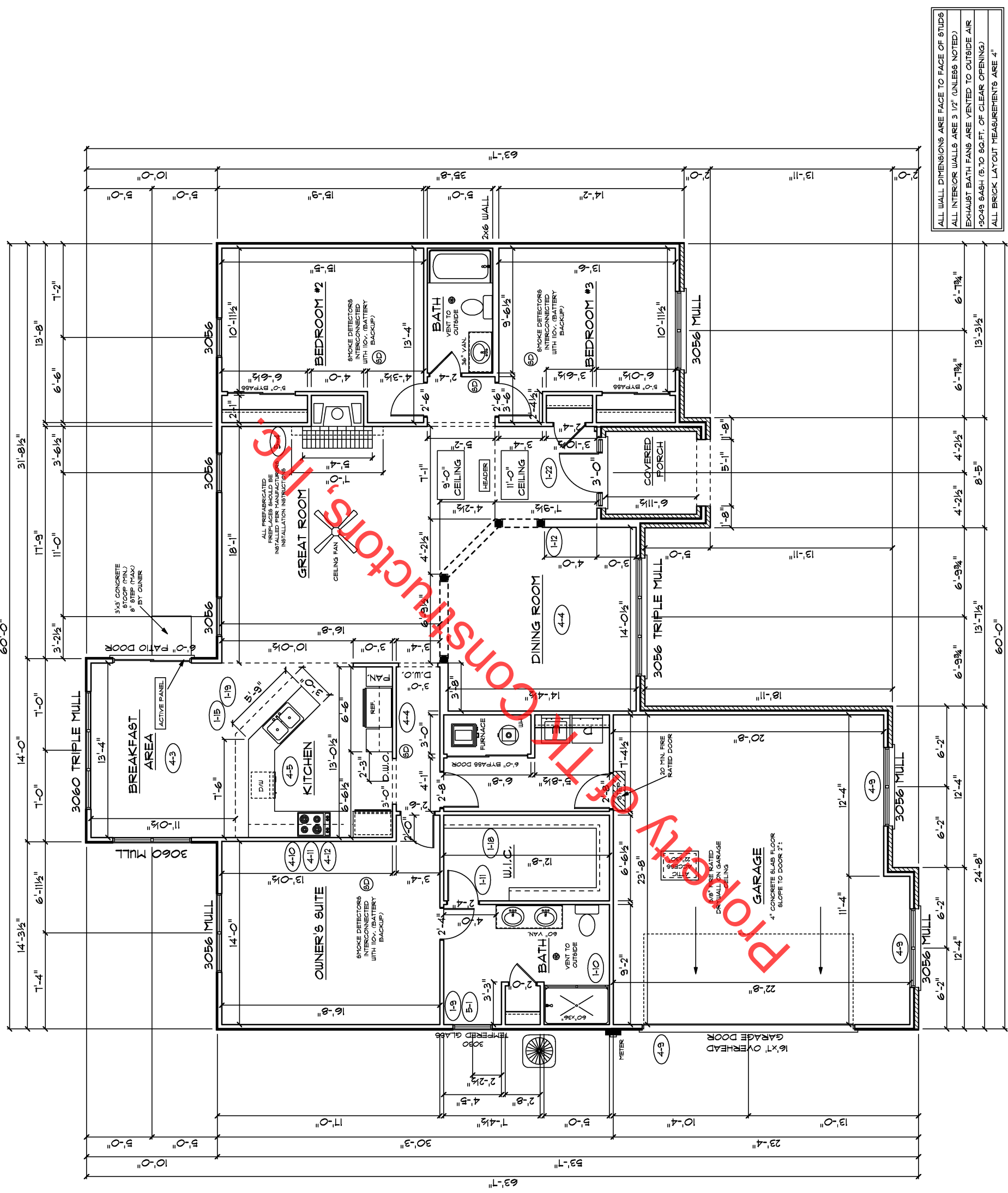


REAR ELEVATION



FRONT ELEVATION

PROPERTY OF TK CONSTRUCTORS



ALL WALL DIMENSIONS ARE FACE TO FACE OF STUDS
 ALL INTERIOR WALLS ARE 3 1/2" (UNLESS NOTED)
 EXHAUST BATH FANS ARE VENTED TO OUTSIDE AIR
 #9049 BATH FANS ARE VENTED TO OUTSIDE AIR
 ALL BRICK LAYOUT MEASUREMENTS ARE 4"

FLOOR PLAN

TOTAL LIVING SQ.FT.	2068
GARAGE	549
TOTAL SQ.FT.	2617
EXCLUDING PORCH	51

**ANDERSEN WINDOW SCHEDULE
 - 200 SERIES -**

ANDERSEN MODEL NO.	R.O. SIZE
3030	36" x 36"
3040	36" x 48"
3049*	36" x 51"
3056*	36" x 66"
3060*	36" x 72"
3049 MULL*	73" x 51"
3056 MULL*	73" x 66"
3060 MULL*	73" x 72"

ANDERSEN SLIDING DOOR
 R.O. 72 3/4" x 82 7/8"

3'-0" FRONT DOOR
 R.O. 36 3/8" x 82 1/2"

3'-0" FRONT DOOR WITH (1) SIDELITE
 R.O. 51 1/8" x 82 1/2"

3'-0" FRONT DOOR WITH (2) SIDELITES
 R.O. 65 3/8" x 82 1/2"

R.O. FOR BI-FOLD DOORS USING DRYWALL
 JAMB FACING = 1 1/4" + DOOR SIZE x (81 1/2")

R.O. FOR BYPASS DOORS USING DRYWALL
 JAMB FACING MAKE SAME AS BOTH DOORS
 ADDED TOGETHER

ALL INTERIOR DOORS
 SIZE + 2" TO WIDTH x 82 1/2" HIGH

R.O. POCKET DOORS
 (2x DOOR WIDTH + 1") x 85" HIGH

* - DENOTES OPENING MEETS
 EGRESS REQUIREMENTS

**9'-0" FIRST FLOOR
 CEILING HEIGHT**

INCLUDES:

- 4 1/4" BASEBOARDS IN LIEU OF 3 1/4"
- 42" KITCHEN CABINETS
- (2) 6x7 GARAGE DOORS