

PRINCETON STANDARD OPTIONS

DIRECT VENT FIREPLACE

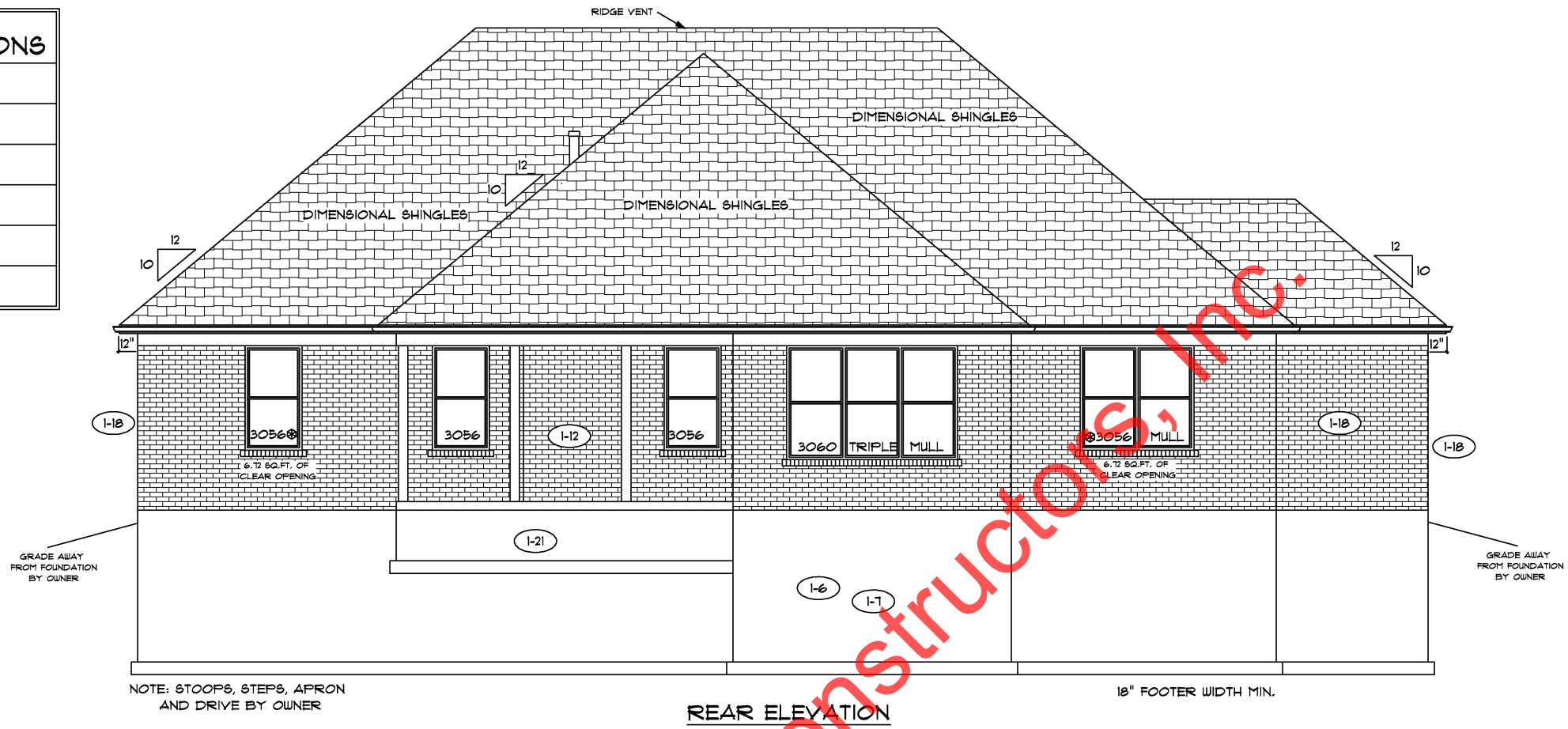
9'-0" FIRST FLOOR CEILING HEIGHT

10/12 HIP ROOF

SCHROCK RAISED PANEL OAK CABINETS

42" WALL CABINETS IN KITCHEN

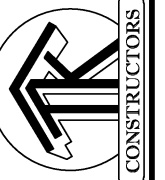
LEVEL 2 CARPET



REAR ELEVATION



FRONT ELEVATION



3.5" CASING
1-28

ADDITIONAL EXT. SILCOCK
4-13

FLOOR PLAN

TOTAL LIVING SQ.FT.	2,198
GARAGE	598
TOTAL SQ.FT.	2,796
EXCLUDING FRONT PORCH	57
EXCLUDING REAR PORCH	177

ANDERSEN WINDOW SCHEDULE - 200 SERIES -

ANDERSEN MODEL NO.	R.O. SIZE
3030	36" x 36"
3040	36" x 48"
3049*	36" x 57"
3056*	36" x 66"
3060*	36" x 72"
3049 MULL*	73" x 57"
3056 MULL*	73" x 66"
3060 MULL*	73" x 72"

ANDERSEN SLIDING DOOR
R.O. 72 3/4" x 82 1/8"

3'-0" FRONT DOOR
R.O. 38 3/8" x 82 1/2"

3'-0" FRONT DOOR WITH (1) SIDELITE
R.O. 51 7/8" x 82 1/2"

3'-0" FRONT DOOR WITH (2) SIDELITES
R.O. 65 3/8" x 82 1/2"

R.O. FOR BI-FOLD DOORS USING DRYWALL
JAMB FACING = 1 1/4" + DOOR SIZE x (81 1/2")

R.O. FOR BYPASS DOORS USING DRYWALL
JAMB FACING MAKE SAME AS BOTH DOORS
ADDED TOGETHER

ALL INTERIOR DOORS
SIZE + 2" TO WIDTH x 82 1/2" HIGH

R.O. POCKET DOOR
(2x DOOR WIDTH + 1") x 85" HIGH

* - DENOTES OPENING MEETS
EGRESS REQUIREMENTS

**9'-0" FIRST FLOOR
CEILING HEIGHT**

INCLUDES:

- 4 1/4" BASEBOARDS IN LIEU OF 3 1/4"
- 42" KITCHEN CABINETS
- (2) 9'x7' GARAGE DOORS

ALL WALL DIMENSIONS ARE FACE TO FACE OF STUDS
ALL INTERIOR WALLS ARE 3 1/2" (UNLESS NOTED)
EXHAUST BATH FANS ARE VENTED TO OUTSIDE AIR
3049 SASH (5.70 SQ.FT. OF CLEAR OPENING)
ALL BRICK LAYOUT MEASUREMENTS ARE 4"

ALL OPEN STAIRS, LANDINGS, PORCHES, AND BALCONIES
OVER 30" HIGH SHALL HAVE 36" HIGH GUARDRAILS AND
INTERMEDIATE RAILS NOT OVER 4" APART

