

**PRINCETON STANDARD OPTIONS**

DIRECT VENT FIREPLACE

9'-0" FIRST FLOOR CEILING HEIGHT

10/12 HIP ROOF

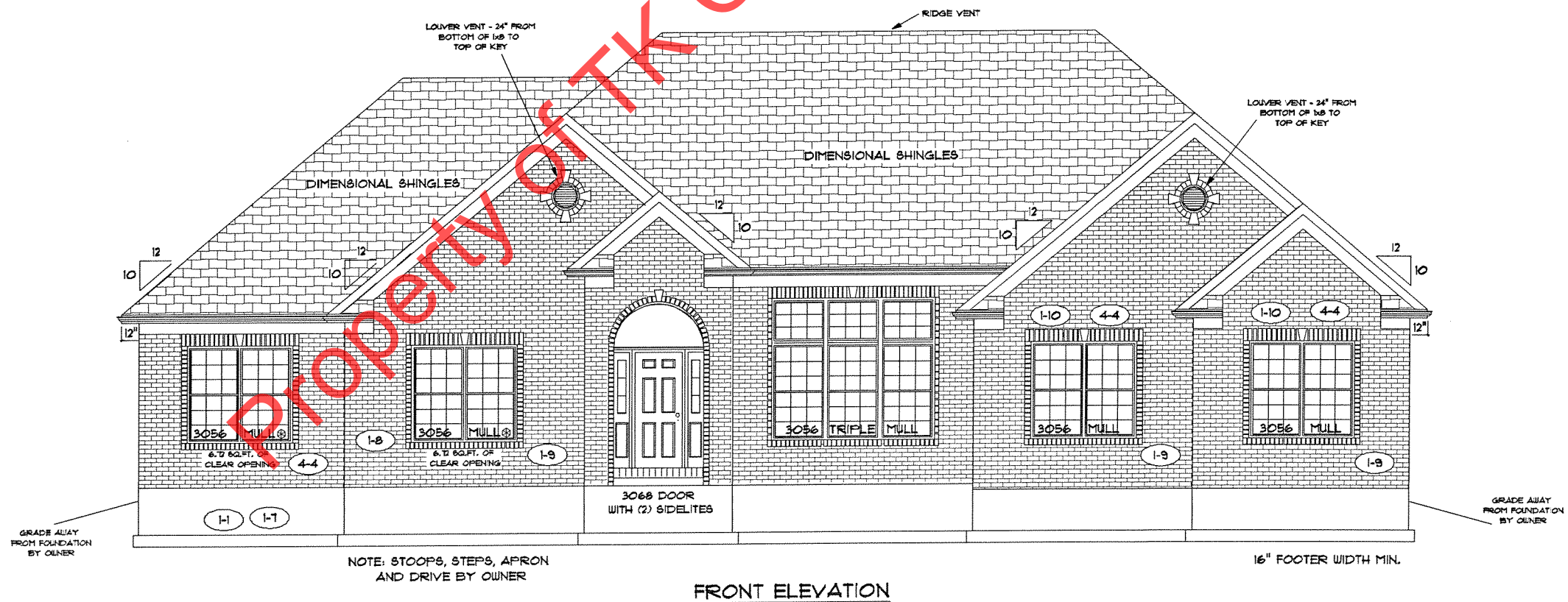
SCHROCK RAISED PANEL OAK CABINETS

42" WALL CABINETS IN KITCHEN

LEVEL 2 CARPET



**REAR ELEVATION**



**FRONT ELEVATION**



**FLOOR PLAN**

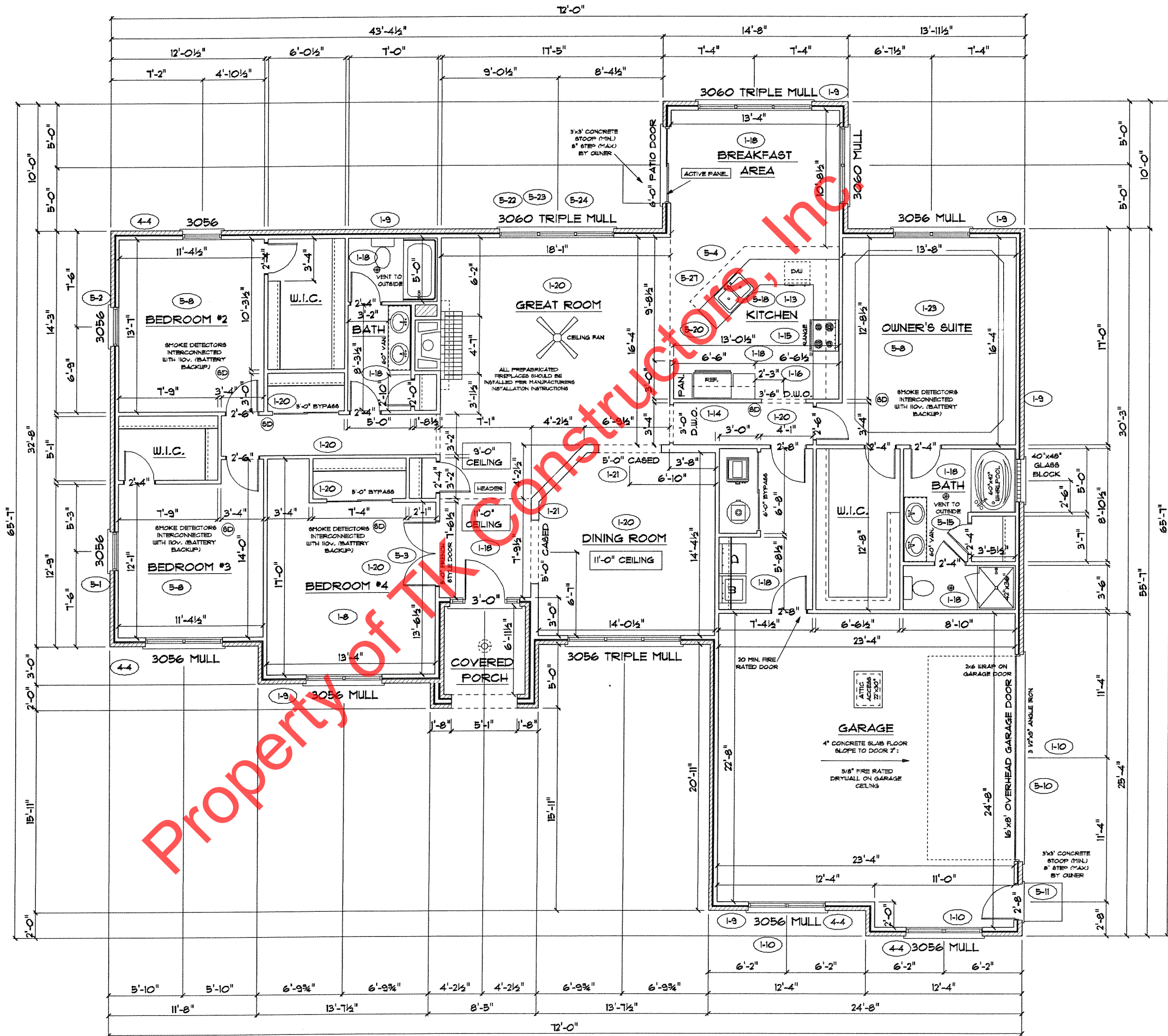
TOTAL LIVING SQ.FT.	2,454
GARAGE	549
TOTAL SQ.FT.	3,003
EXCLUDING PORCH	51

ANDERSEN WINDOW SCHEDULE	
4-2 - 200 SERIES - 4-3	
ANDERSEN MODEL NO.	R.O. SIZE
3030	36" x 36"
3040	36" x 48"
3049*	36" x 51"
3056*	36" x 66"
3060*	36" x 72"
3049 MULL*	73" x 51"
3056 MULL*	73" x 66"
3060 MULL*	73" x 72"
ANDERSEN SLIDING DOOR R.O. T2 3/4" x 82 1/8"	
3'-0" FRONT DOOR R.O. 38 3/8" x 82 1/2"	
3'-0" FRONT DOOR WITH (1) SIDELITE R.O. 51 7/8" x 82 1/2"	
3'-0" FRONT DOOR WITH (2) SIDELITES R.O. 65 3/8" x 82 1/2"	
R.O. FOR BI-FOLD DOORS USING DRYWALL JAMB FACING = 1 1/4" + DOOR SIZE x (81 1/2")	
R.O. FOR BYPASS DOORS USING DRYWALL JAMB FACING MAKE SAME AS BOTH DOORS ADDED TOGETHER	
ALL INTERIOR DOORS SIZE + 2" TO WIDTH x 82 1/2" HIGH	
R.O. POCKET DOOR (2x DOOR WIDTH + 1") x 85" HIGH	

**9'-0" FIRST FLOOR  
CEILING HEIGHT**

INCLUDES:	
1.	4 1/4" BASEBOARDS IN LIEU OF 3 1/4"
2.	42" KITCHEN CABINETS
3.	(1) 16'x8' OVERHEAD GARAGE DOOR (5-10)

ALL WALL DIMENSIONS ARE FACE TO FACE OF STUDS  
 ALL INTERIOR WALLS ARE 3/2" (UNLESS NOTED)  
 EXHAUST BATH FANS ARE VENTED TO OUTSIDE AIR  
 \*3049 SASH (5.70 SQ.FT. OF CLEAR OPENING)  
 ALL BRICK LAYOUT MEASUREMENTS ARE 4"



PAGE NO: **30**

ADDENDUM 1,4  
 VER: 070110  
 DRAWING BY: SES  
 SCALE: 1/8 IN.=1 FT.

DATE October 01, 2012

TK CONSTRUCTORS  
 PRINCETON

CONSTRUCTORS

JOB NO: 112-12-0193