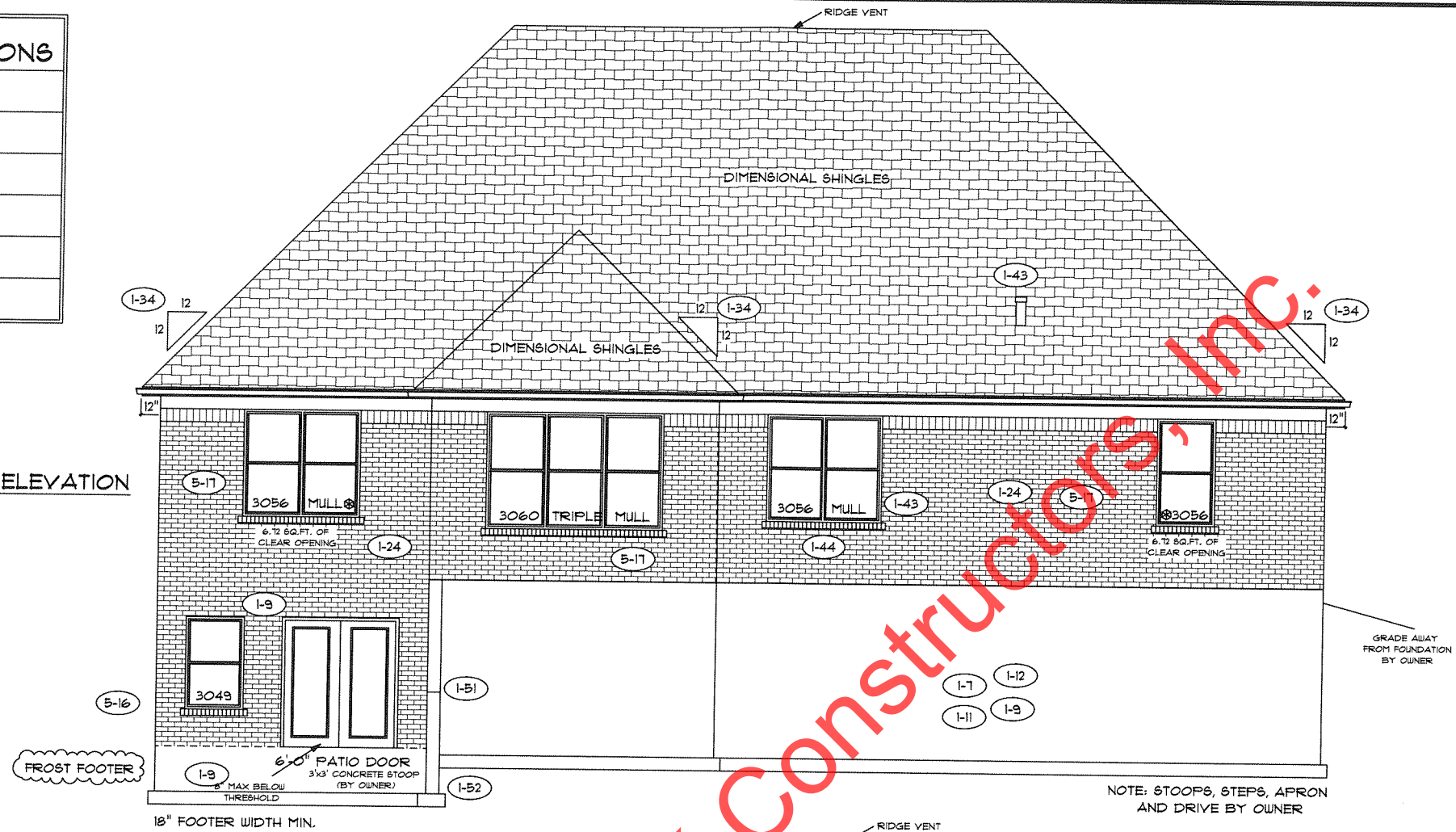


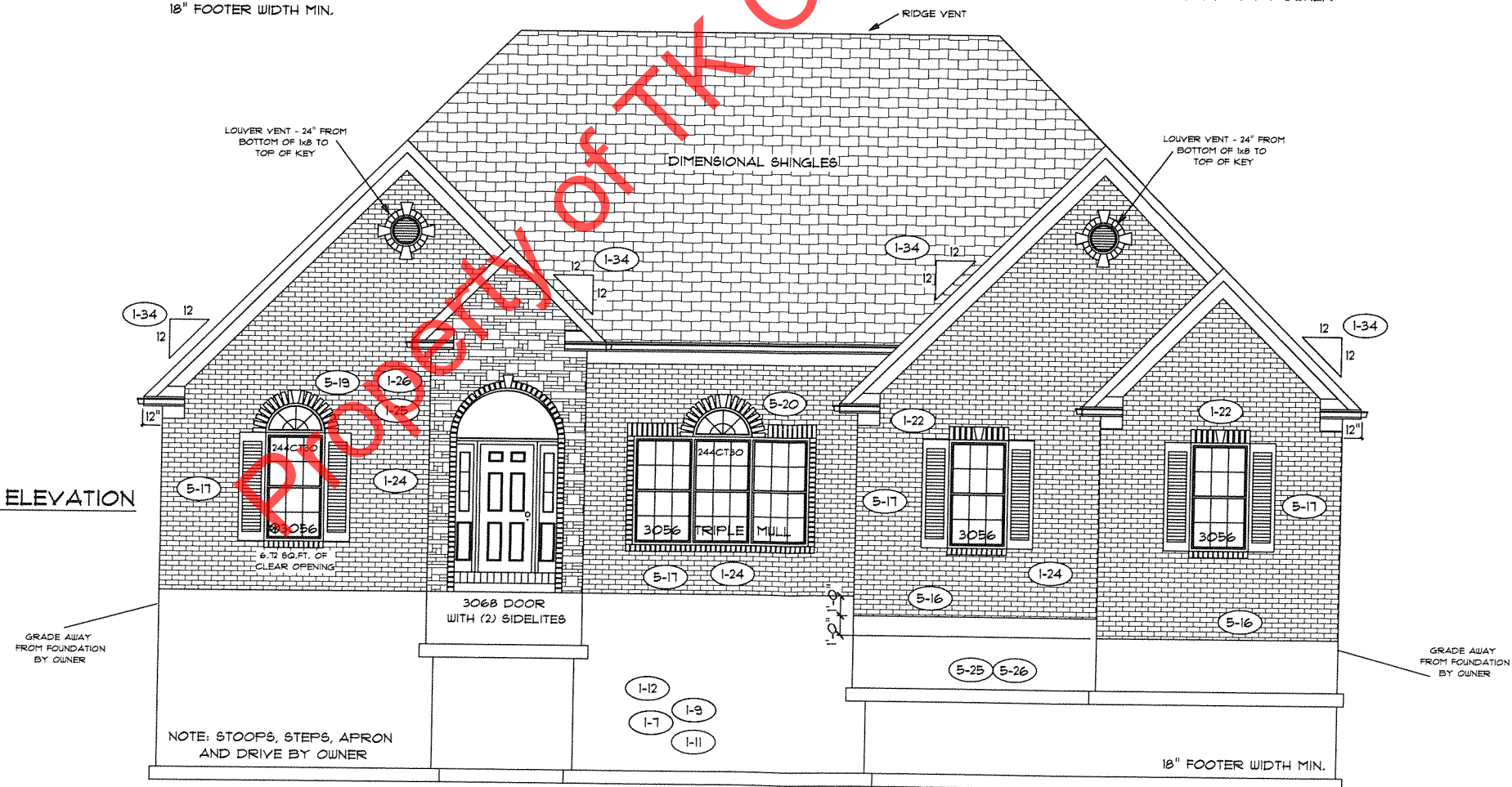
**PRINCETON STANDARD OPTIONS**

- DIRECT VENT FIREPLACE
- 9'-0" FIRST FLOOR CEILING HEIGHT
- 10/12 HIP ROOF
- SCHROCK RAISED PANEL OAK CABINETS
- 42" WALL CABINETS IN KITCHEN
- LEVEL 2 CARPET

**REAR ELEVATION**



**FRONT ELEVATION**



CONSTRUCTORS

**TK CONSTRUCTORS**  
**PRINCETON**

**FLOOR PLAN**

TOTAL LIVING SQ.FT.	2,072
GARAGE	549
TOTAL SQ.FT.	2,621
EXCLUDING PORCH	55

**ANDERSEN WINDOW SCHEDULE - 200 SERIES -**

ANDERSEN MODEL NO.	R.O. SIZE
3030	36" x 36"
3040	36" x 48"
3049*	36" x 57"
3056*	36" x 66"
3060*	36" x 72"
3049 MULL*	73" x 57"
3056 MULL*	73" x 66"
3060 MULL*	73" x 72"
244CT30	36" x 21 1/8"

ANDERSEN SLIDING DOOR  
R.O. 72 3/4" x 82 1/8"

3'-0" FRONT DOOR  
R.O. 38 3/8" x 82 1/2"

3'-0" FRONT DOOR WITH (1) SIDELITE  
R.O. 51 1/8" x 82 1/2"

3'-0" FRONT DOOR WITH (2) SIDELITES  
R.O. 65 3/8" x 82 1/2"

R.O. FOR BI-FOLD DOORS USING DRYWALL JAMB FACING = 1 1/4" + DOOR SIZE x (81 1/2")

R.O. FOR BYPASS DOORS USING DRYWALL JAMB FACING MAKE SAME AS BOTH DOORS ADDED TOGETHER

ALL INTERIOR DOORS  
SIZE + 2" TO WIDTH x 82 1/2" HIGH

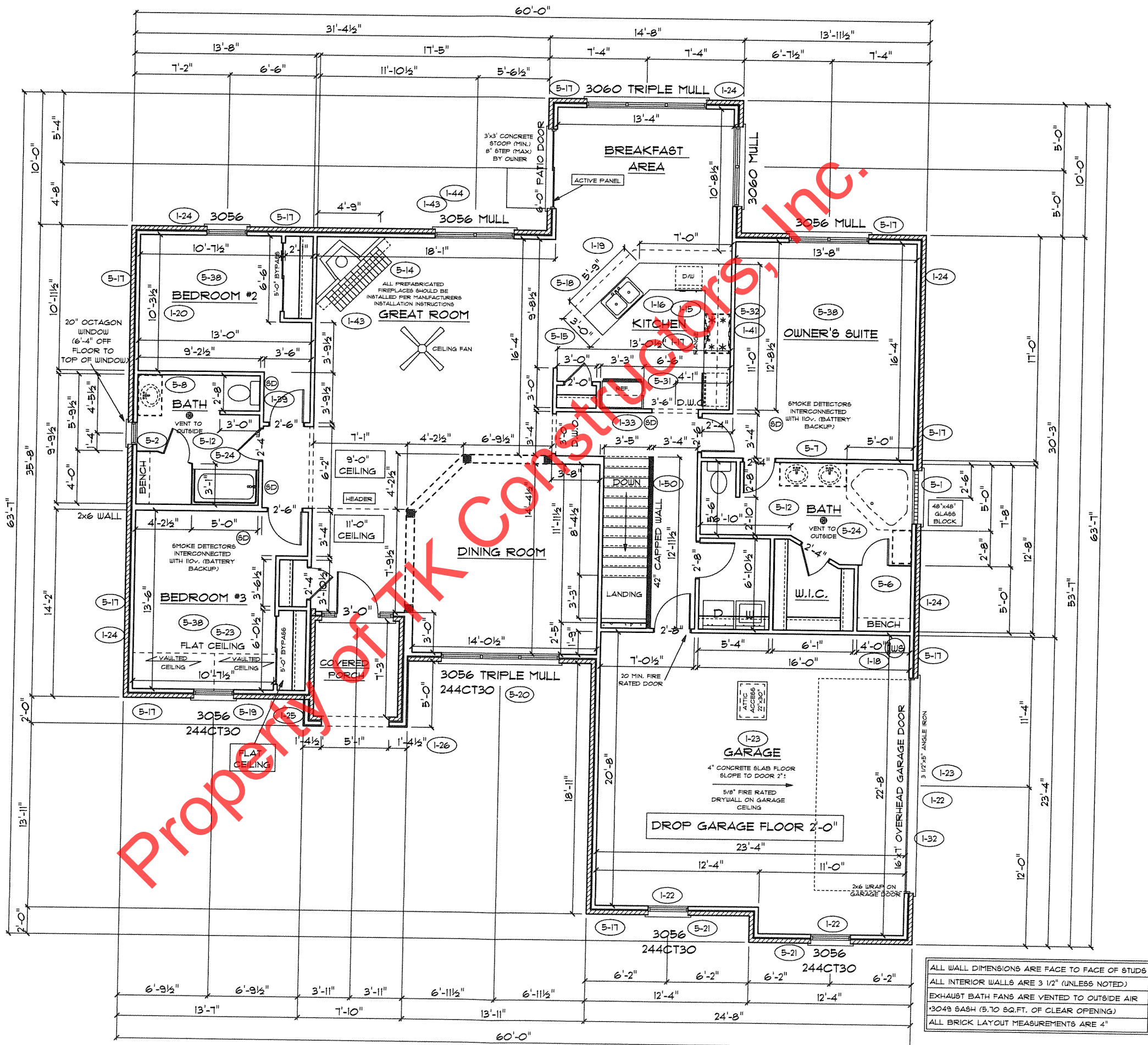
R.O. POCKET DOOR  
(2x DOOR WIDTH + 1") x 85" HIGH

\* - DENOTES OPENING MEETS EGRESS REQUIREMENTS

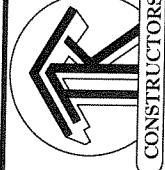
**9'-0" FIRST FLOOR CEILING HEIGHT**

INCLUDES:

1.	4 1/4" BASEBOARDS IN LIEU OF 3 1/4"
2.	42" KITCHEN CABINETS
3.	(2) 9'x7' GARAGE DOORS



ALL WALL DIMENSIONS ARE FACE TO FACE OF STUDS  
ALL INTERIOR WALLS ARE 3 1/2" (UNLESS NOTED)  
EXHAUST BATH FANS ARE VENTED TO OUTSIDE AIR  
\*3049 BASH (5.70 SQ.FT. OF CLEAR OPENING)  
ALL BRICK LAYOUT MEASUREMENTS ARE 4"



CONSTRUCTORS