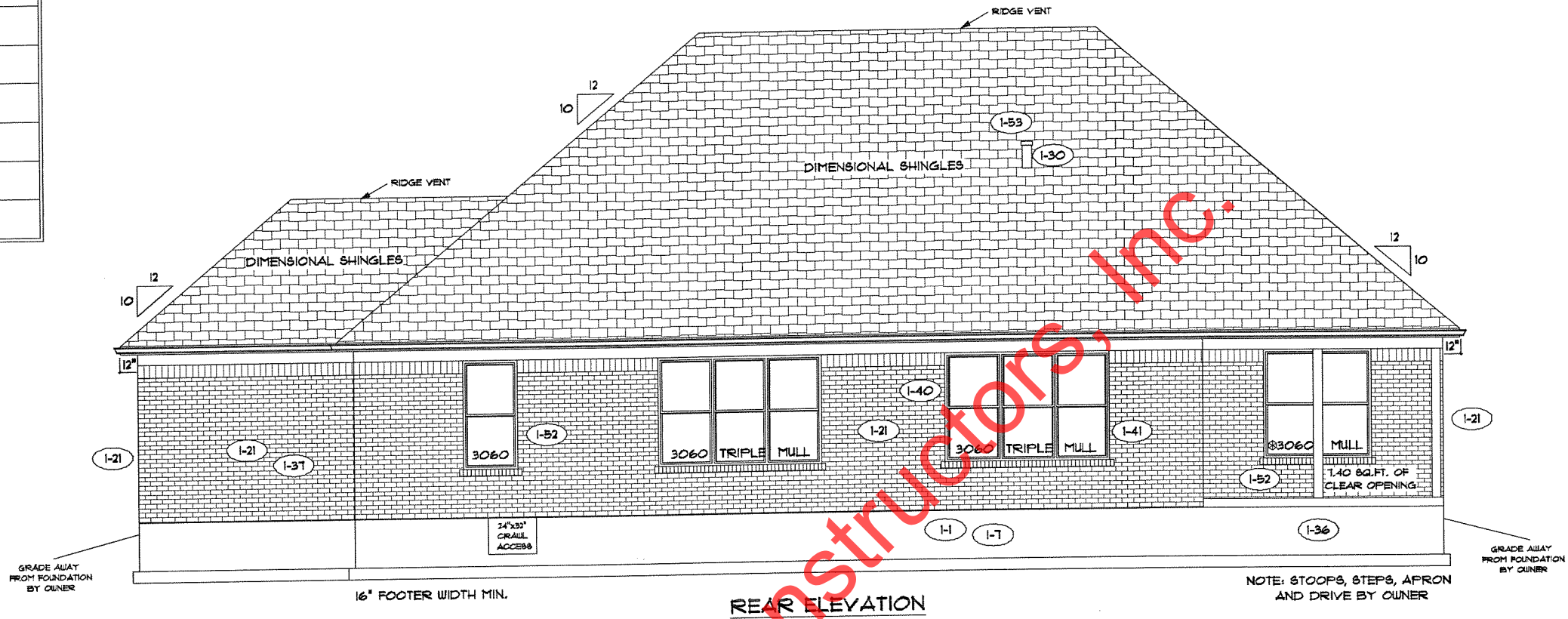
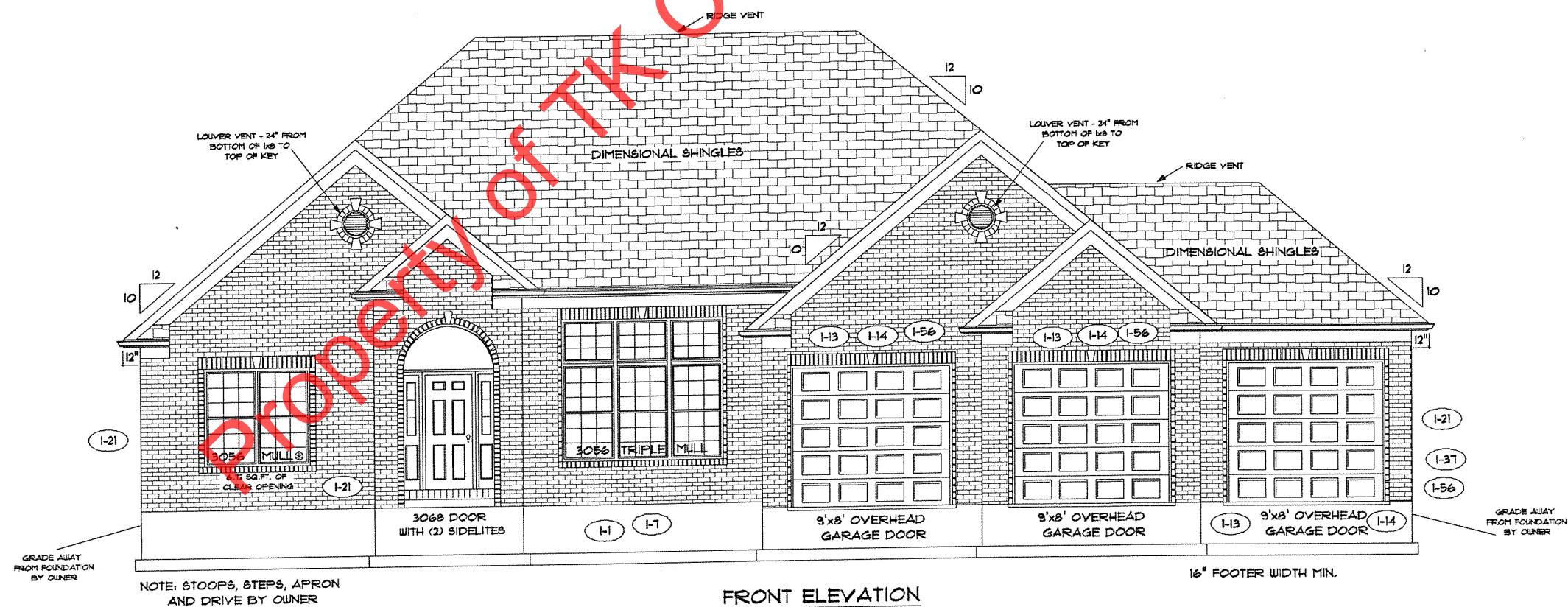


PRINCETON STANDARD OPTIONS

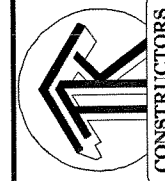
- DIRECT VENT FIREPLACE
- 9'-0" FIRST FLOOR CEILING HEIGHT
- 10/12 HIP ROOF
- SCHROCK RAISED PANEL OAK CABINETS
- 42" WALL CABINETS IN KITCHEN
- LEVEL 2 CARPET



REAR ELEVATION



FRONT ELEVATION



CONSTRUCTORS

TK CONSTRUCTORS
PRINCETON

WIDER TRIM - 3" (1-33)

FLOOR PLAN

TOTAL LIVING SQ.FT.	2,485
GARAGE	814
TOTAL SQ.FT.	3,299
EXCLUDING FRONT PORCH	57
EXCLUDING REAR PORCH	159

ANDERSEN WINDOW SCHEDULE - 200 SERIES - (1-54)

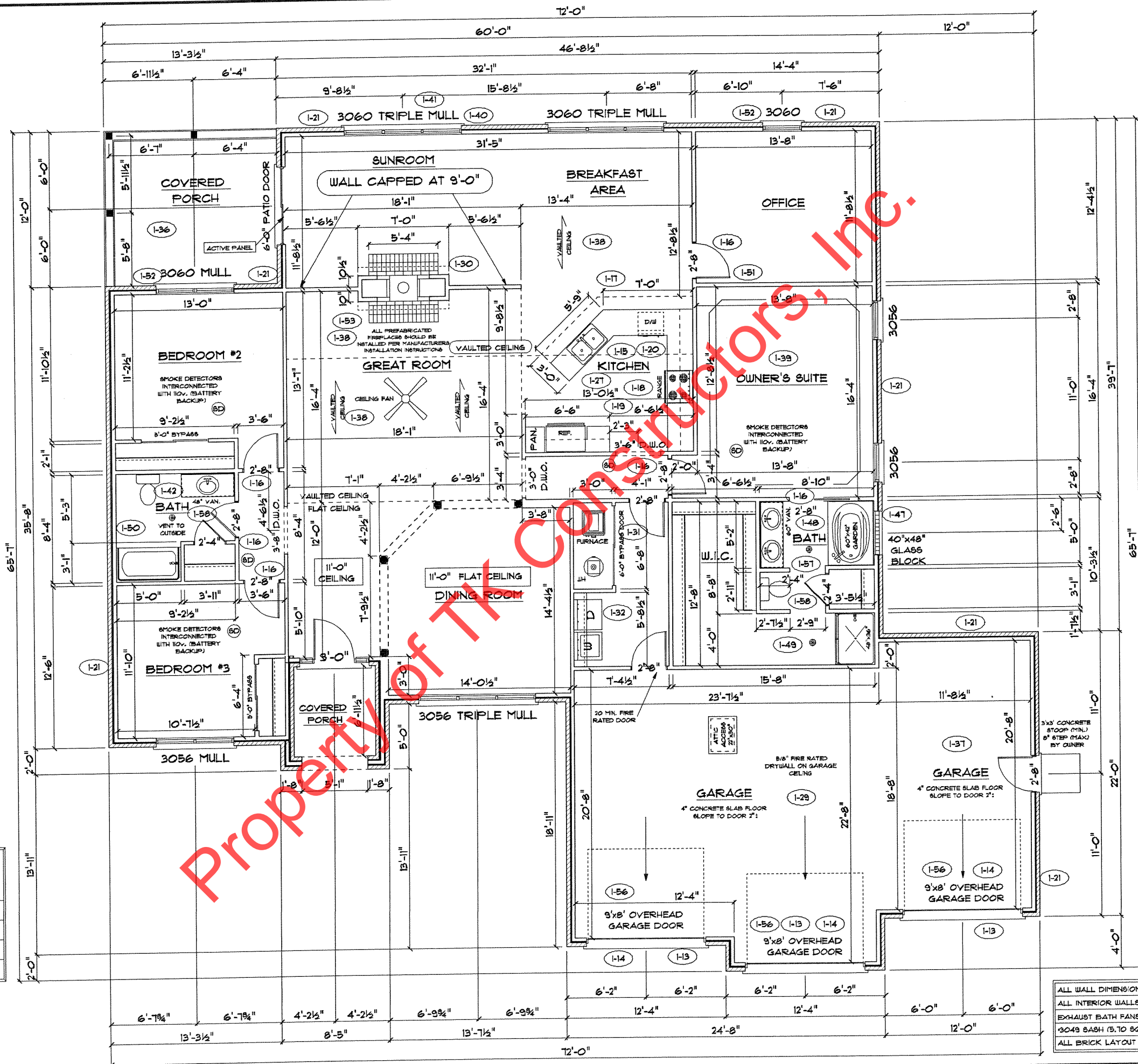
ANDERSEN MODEL NO.	R.O. SIZE
3030	36" x 36"
3040	36" x 48"
3049*	36" x 57"
3056*	36" x 66"
3060*	36" x 72"
3049 MULL*	73" x 57"
3056 MULL*	73" x 66"
3060 MULL*	73" x 72"

- ANDERSEN SLIDING DOOR
R.O. 72 3/4" x 82 7/8"
- 3'-0" FRONT DOOR
R.O. 38 3/8" x 82 1/2"
- 3'-0" FRONT DOOR WITH (1) SIDELITE
R.O. 51 7/8" x 82 1/2"
- 3'-0" FRONT DOOR WITH (2) SIDELITES
R.O. 65 3/8" x 82 1/2"
- R.O. FOR BI-FOLD DOORS USING DRYWALL
JAMB FACING = 1 1/4" + DOOR SIZE x (81 1/2")
- R.O. FOR BYPASS DOORS USING DRYWALL
JAMB FACING MAKE SAME AS BOTH DOORS
ADDED TOGETHER
- ALL INTERIOR DOORS
SIZE + 2" TO WIDTH x 82 1/2" HIGH
- R.O. POCKET DOOR
(2x DOOR WIDTH + 1") x 85" HIGH

* - DENOTES OPENING MEETS
EGRESS REQUIREMENTS

9'-0" FIRST FLOOR
CEILING HEIGHT

INCLUDES:	
1.	4 1/4" BASEBOARDS IN LIEU OF 3 1/4"
2.	42" KITCHEN CABINETS
3.	(2) 9'x7' GARAGE DOORS



ALL WALL DIMENSIONS ARE FACE TO FACE OF STUDS
ALL INTERIOR WALLS ARE 3/2" (UNLESS NOTED)
EXHAUST BATH FANS ARE VENTED TO OUTSIDE AIR
(3049 BASH (B.T.O SQ.FT. OF CLEAR OPENING)
ALL BRICK LAYOUT MEASUREMENTS ARE 4"

PAGE NO.: 30

ADDENDUM 1

VER: 100812

DRAWING BY: SES

SCALE: 1/8 IN.=1 FT.

DATE: November 14, 2012

JOB NO.: 110-12-0022

TK CONSTRUCTORS
PRINCETON