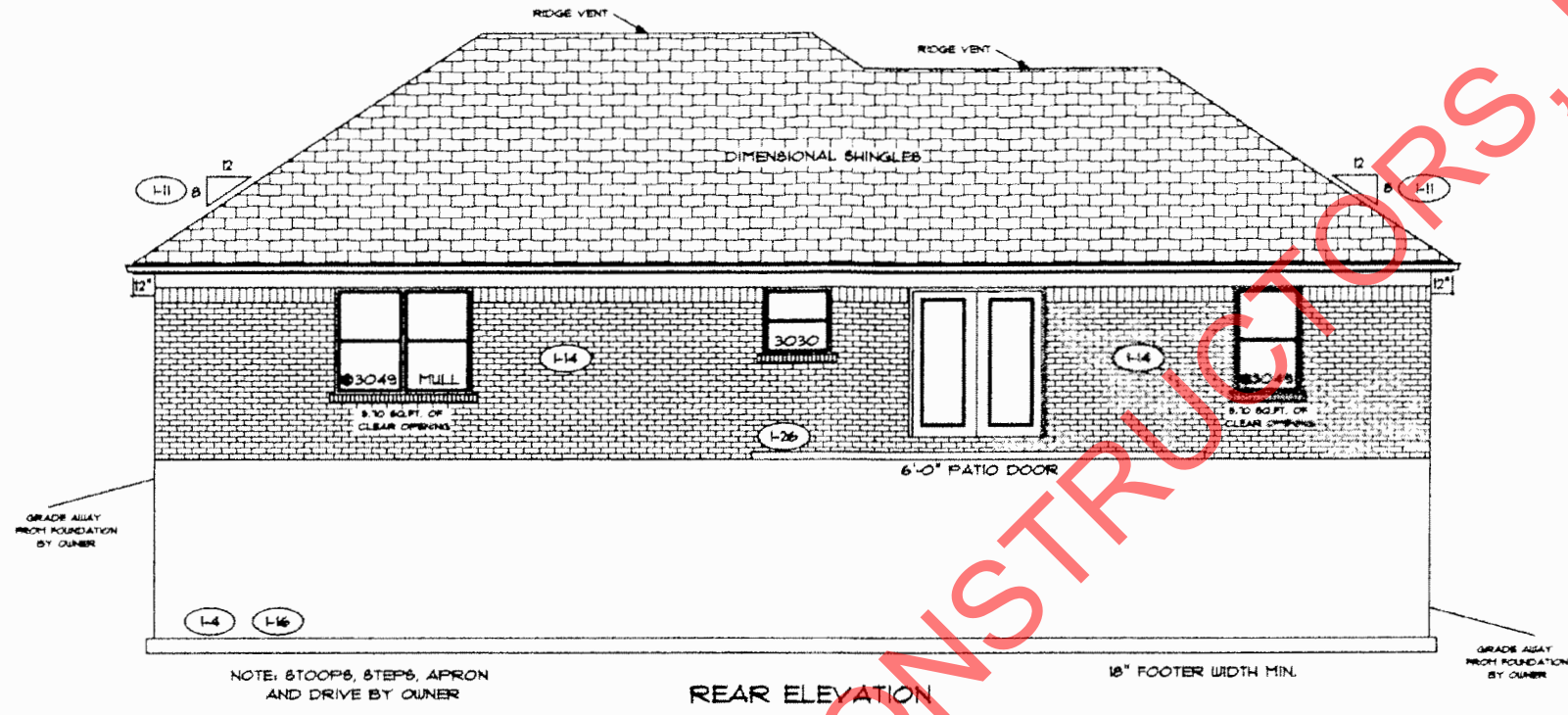
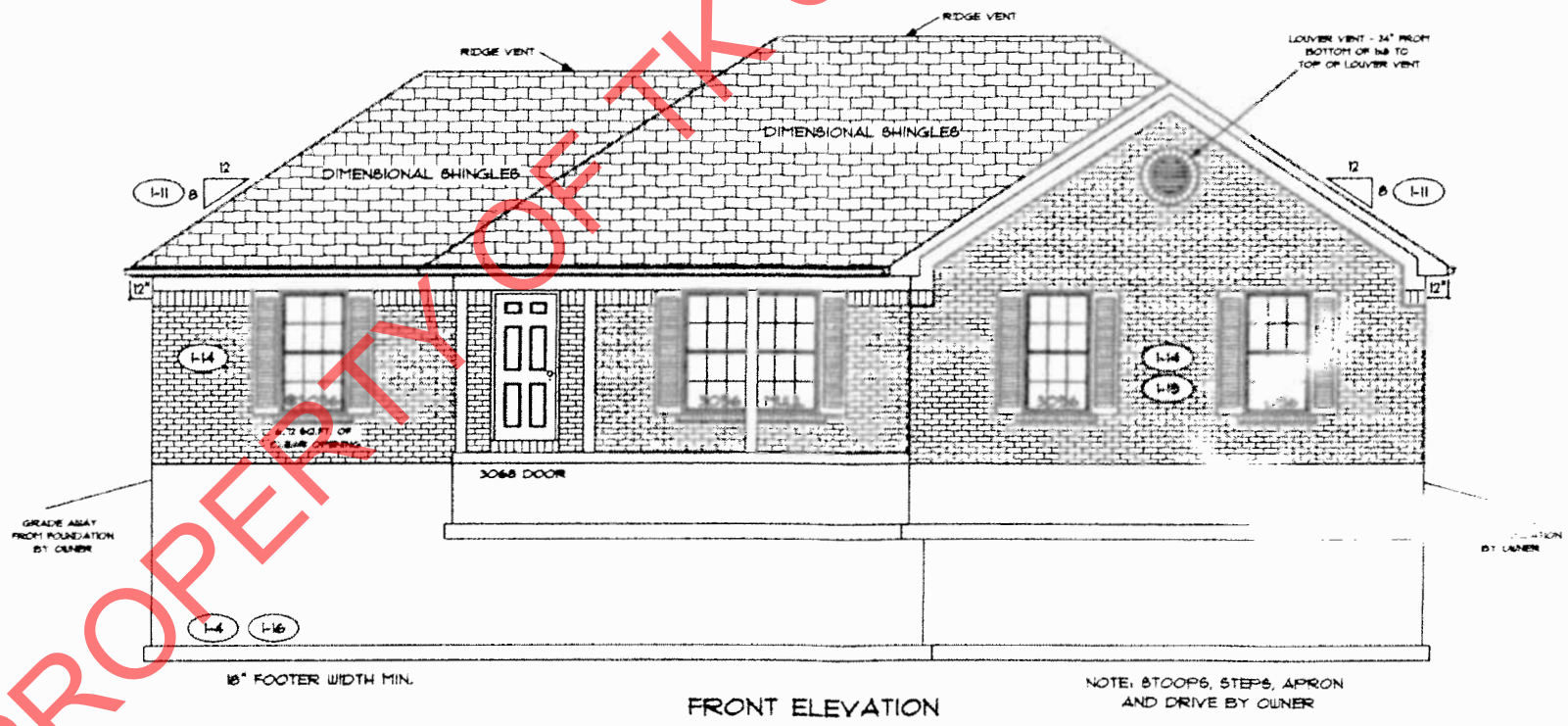


Original marked up
2-22-16



REAR ELEVATION

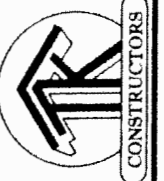


FRONT ELEVATION

PROPERTY OF TK CONSTRUCTORS, INC

PAGE NO: 1B

ADDENDUM 1, 4, 5
VER: 09-02 AM
DRAWING BY: GW
1/8" = 1'



DATE: January 28, 2016

JOB NO: 212-16-0510

TK CONSTRUCTORS
NEW ORLEANS

Handwritten initials 'RC' and 'CC'.

FLOOR PLAN

TOTAL LIVING SQ.FT.	1829
GARAGE	474
TOTAL SQ.FT.	2303
EXCLUDING PORCH	120

ANDERSEN WINDOW SCHEDULE - 200 SERIES -	
ANDERSEN MODEL NO.	R.O. SIZE
3030	36" x 36"
3040	36" x 48"
3049	36" x 51"
3056	36" x 66"
3060	36" x 12"
3049 MULL.	13" x 51"
3056 MULL.	13" x 66"
3060 MULL.	13" x 12"
ANDERSEN SLIDING DOOR R.O. 72 3/4" x 82 1/8"	
5'-0" FRONT DOOR R.O. 36 3/8" x 82 1/2"	
5'-0" FRONT DOOR WITH (1) SIDELITE R.O. 54 1/8" x 82 1/2"	
5'-0" FRONT DOOR WITH (2) SIDELITES R.O. 68 3/8" x 82 1/2"	
R.O. FOR BI-FOLD DOORS USING DRYWALL JAMBS FACING + 1 1/4" + DOOR SIZE x (81 1/2")	
R.O. FOR BY-PASS DOORS USING DRYWALL JAMBS FACING MAKE SAME AS BOTH DOORS ADDED TOGETHER	
ALL INTERIOR DOORS SIZE + 2" TO WIDTH x 82 1/2" HIGH	
R.O. POCKET DOOR (2x DOOR WIDTH + 1") x 85" HIGH	

** DENOTES OPENING MEETS
ESR266 REQUIREMENTS

ALL WALL DIMENSIONS ARE FACE TO FACE OF STUDS
ALL INTERIOR WALLS ARE 3/2" UNLESS NOTED
EXHAUST BATH FANS ARE VENTED TO OUTSIDE AIR
(DOES BATH 8" TO 80 FT. OF CLEAR OPENING)
ALL BRICK LAYOUT MEASUREMENTS ARE 4"

