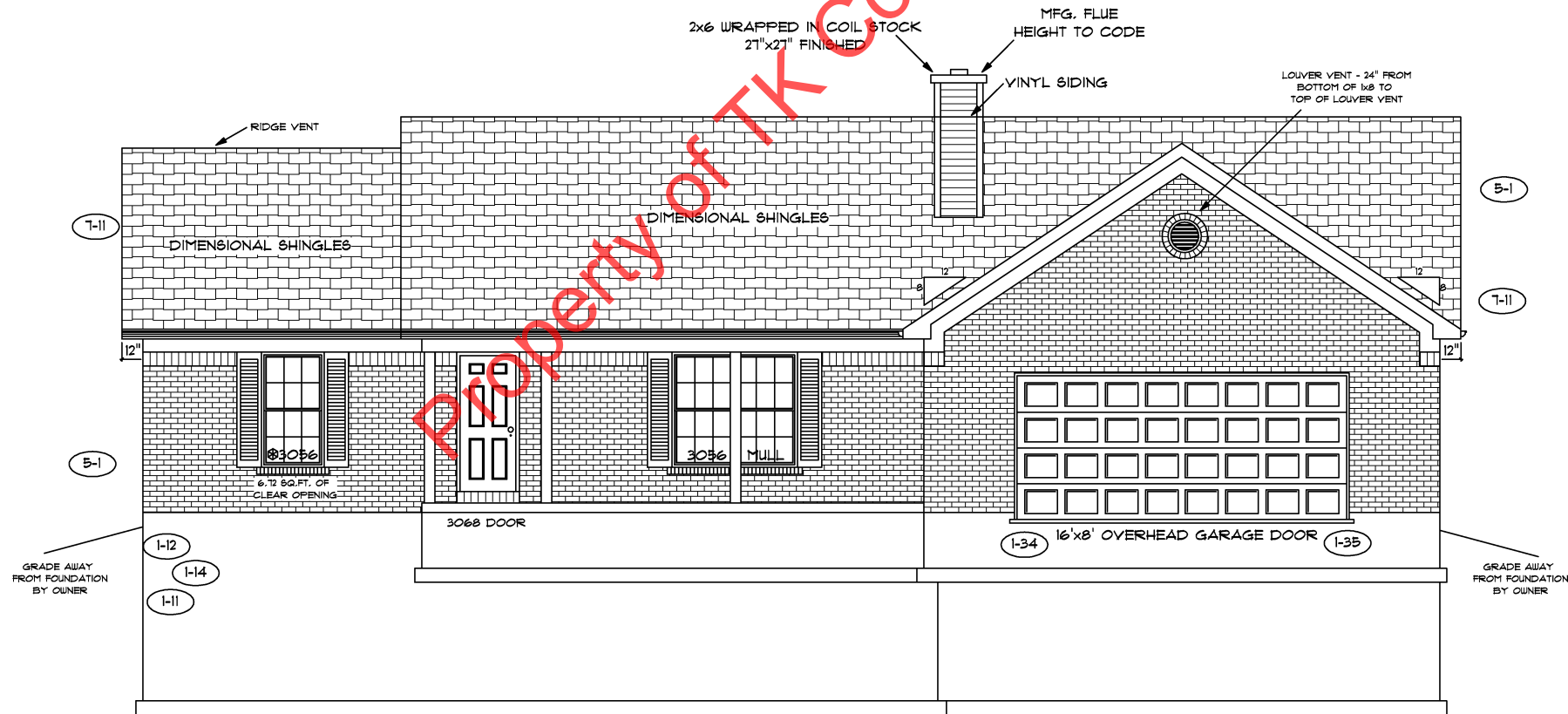


NOTE: STOOPS, STEPS, APRON AND DRIVE BY OWNER

REAR ELEVATION

18" FOOTER WIDTH MIN.



18" FOOTER WIDTH MIN.

FRONT ELEVATION

NOTE: STOOPS, STEPS, APRON AND DRIVE BY OWNER

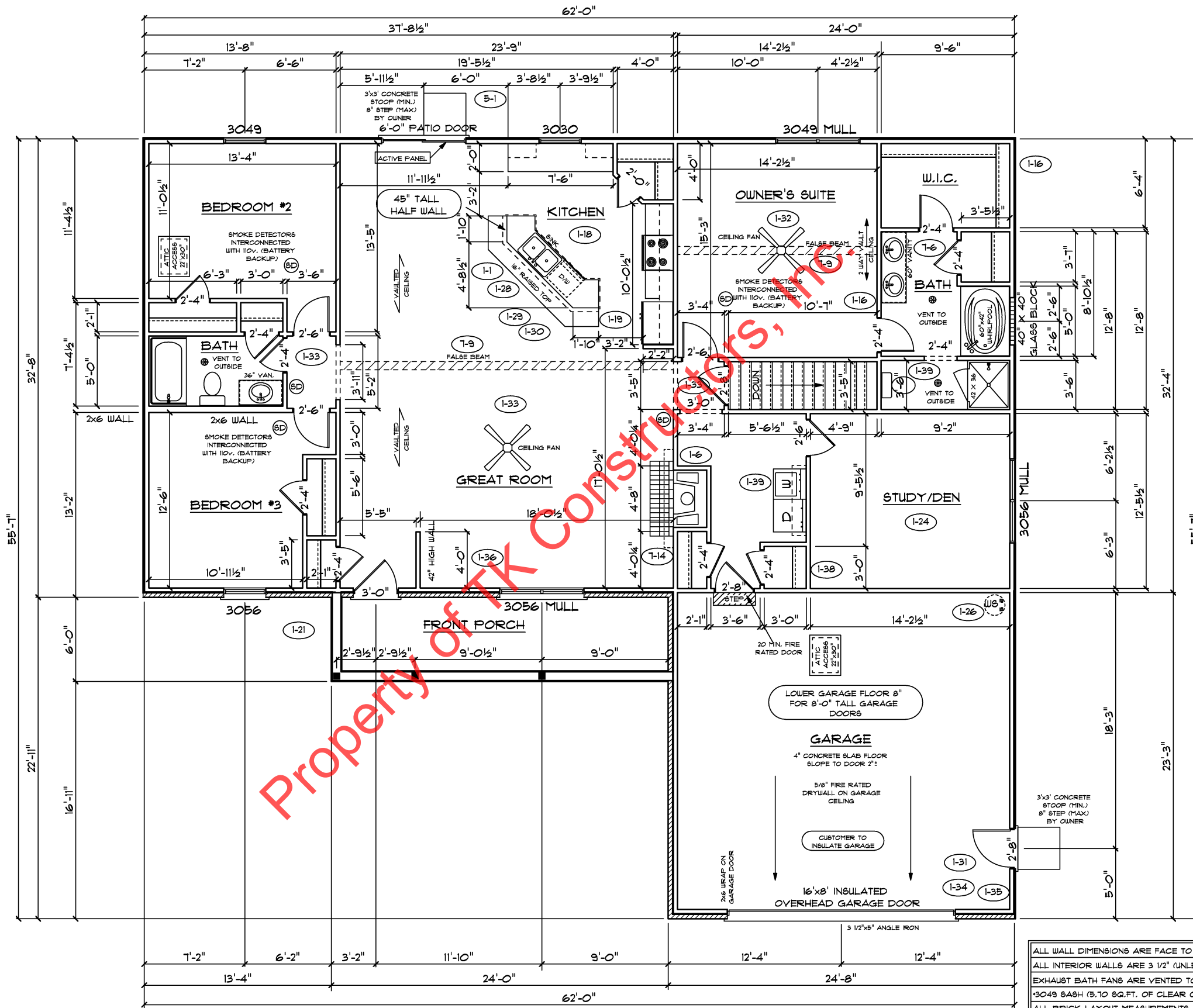


FLOOR PLAN

TOTAL LIVING SQ.FT.	2036
GARAGE	567
TOTAL SQ.FT.	2603
EXCLUDING PORCH	144

ANDERSEN WINDOW SCHEDULE - 200 SERIES -	
ANDERSEN MODEL NO.	R.O. SIZE
3030	36" x 36"
3040	36" x 48"
3049*	36" x 57"
3056*	36" x 66"
3060*	36" x 72"
3049 MULL*	73" x 57"
3056 MULL*	73" x 66"
3060 MULL*	73" x 72"
ANDERSEN SLIDING DOOR R.O. 72 3/4" x 82 1/8"	
3'-0" FRONT DOOR R.O. 38 3/8" x 82 1/2"	
3'-0" FRONT DOOR WITH (1) SIDELITE R.O. 51 7/8" x 82 1/2"	
3'-0" FRONT DOOR WITH (2) SIDELITES R.O. 65 3/8" x 82 1/2"	
R.O. FOR BI-FOLD DOORS USING DRYWALL JAMB FACING = 1 1/4" + DOOR SIZE x (81 1/2")	
R.O. FOR BYPASS DOORS USING DRYWALL JAMB FACING MAKE SAME AS BOTH DOORS ADDED TOGETHER	
ALL INTERIOR DOORS SIZE + 2" TO WIDTH x 82 1/2" HIGH	
R.O. POCKET DOOR (2x DOOR WIDTH + 1") x 85" HIGH	

\* - DENOTES OPENING MEETS EGRESS REQUIREMENTS



ALL WALL DIMENSIONS ARE FACE TO FACE OF STUDS  
 ALL INTERIOR WALLS ARE 3 1/2" (UNLESS NOTED)  
 EXHAUST BATH FANS ARE VENTED TO OUTSIDE AIR  
 3049 SASH (5.70 SQ.FT. OF CLEAR OPENING)  
 ALL BRICK LAYOUT MEASUREMENTS ARE 4"