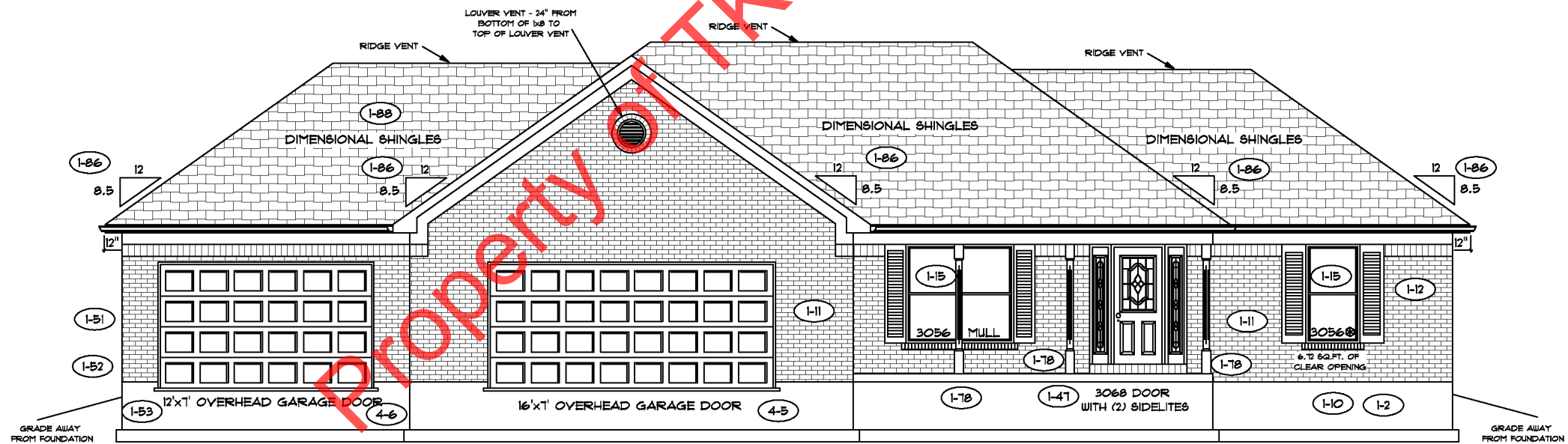


REAR ELEVATION



FRONT ELEVATION



**FLOOR PLAN**

TOTAL LIVING SQ.FT.	1,894
GARAGE	1,075
TOTAL SQ.FT.	2,969
EXCLUDING PORCH	120

**ANDERSEN WINDOW SCHEDULE**

4-8 - 200 SERIES - 1-13

ANDERSEN MODEL NO.	R.O. SIZE
3030	36" x 36"
3040	36" x 48"
3049*	36" x 57"
3056*	36" x 66"
3060*	36" x 72"
3049 MULL*	73" x 57"
3056 MULL*	73" x 66"
3060 MULL*	73" x 72"

ANDERSEN SLIDING DOOR  
R.O. 72 3/4" x 82 7/8"

3'-0" FRONT DOOR  
R.O. 38 3/8" x 82 1/2"

3'-0" FRONT DOOR WITH (1) SIDELITE  
R.O. 51 7/8" x 82 1/2"

3'-0" FRONT DOOR WITH (2) SIDELITES  
R.O. 65 3/8" x 82 1/2"

R.O. FOR BI-FOLD DOORS USING DRYWALL  
JAMB FACING = 1 1/4" + DOOR SIZE x (81 1/2")

R.O. FOR BYPASS DOORS USING DRYWALL  
JAMB FACING MAKE SAME AS BOTH DOORS  
ADDED TOGETHER

ALL INTERIOR DOORS  
SIZE + 2" TO WIDTH x 82 1/2" HIGH

R.O. POCKET DOOR  
(2x DOOR WIDTH + 1") x 85" HIGH

\* - DENOTES OPENING MEETS  
EGRESS REQUIREMENTS

ALL WALL DIMENSIONS ARE FACE TO FACE OF STUDS  
ALL INTERIOR WALLS ARE 3/2" (UNLESS NOTED)  
EXHAUST BATH FANS ARE VENTED TO OUTSIDE AIR  
\*3049 BASH (5.10 SQ.FT. OF CLEAR OPENING)  
ALL BRICK LAYOUT MEASUREMENTS ARE 4"

