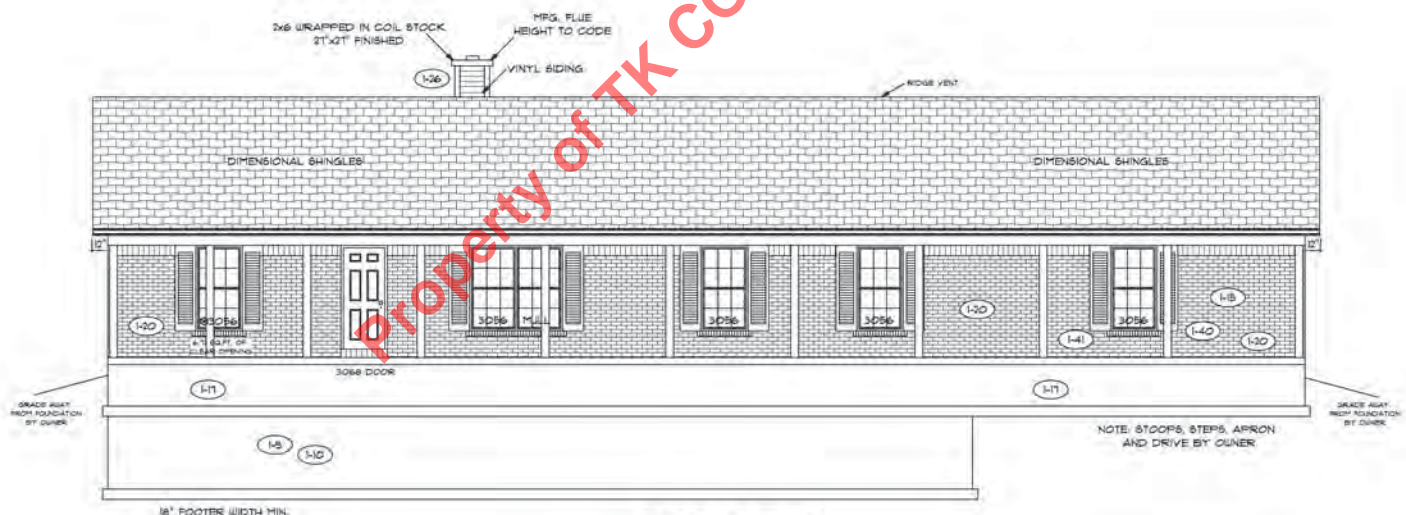


REAR ELEVATION



FRONT ELEVATION

PAGE NO.: 1B
 ADDENDUM 1
 VER: 092412
 DRAWING BY: SES
 1/8" = 1'
 DATE: June 24, 2013
 JOB NO.:
 CONSTRUCTORS

TK CONSTRUCTORS
 NEW ORLEANS

FLOOR PLAN

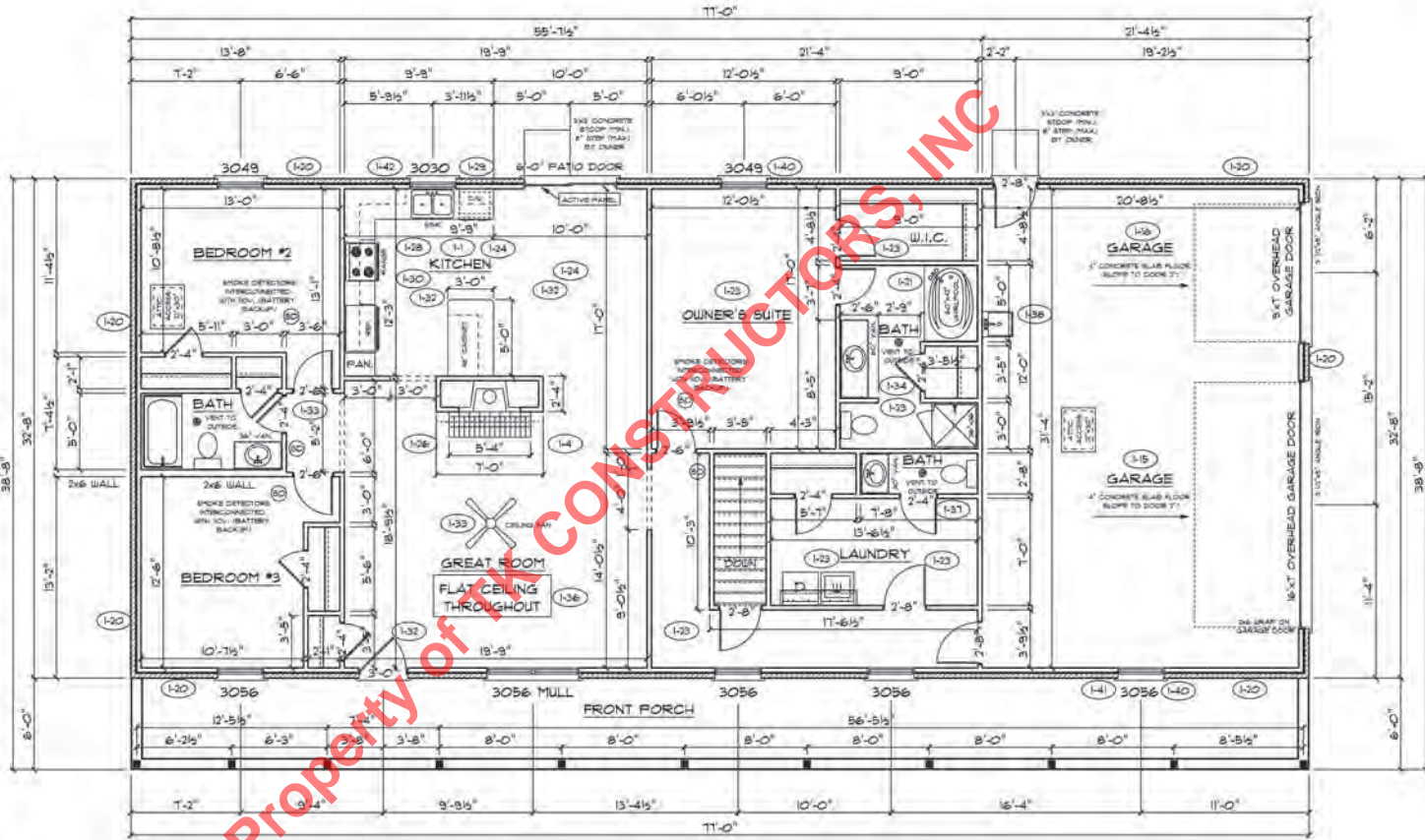
TOTAL LIVING SQ.FT.	1817
GARAGE	698
TOTAL SQ.FT.	2515
EXCLUDING PORCH	462

ANDERSEN WINDOW SCHEDULE
- 200 SERIES -

ANDERSEN MODEL NO.	R.O. SIZE
3030	36" x 36"
3040	36" x 48"
3049*	36" x 57"
3056*	36" x 66"
3060*	36" x 72"
3049 MULL*	73" x 57"
3056 MULL*	73" x 66"
3060 MULL*	73" x 72"
ANDERSEN SLIDING DOOR R.O. 72 3/4" x 82 7/8"	
3'-0" FRONT DOOR R.O. 38 3/8" x 82 1/2"	
3'-0" FRONT DOOR WITH (1) SIDELITE R.O. 51 1/8" x 82 1/2"	
3'-0" FRONT DOOR WITH (2) SIDELITES R.O. 65 3/8" x 82 1/2"	
R.O. FOR BI-FOLD DOORS USING DRYWALL JAMB FACING + 1 1/4" + DOOR SIZE x (81 1/2")	
R.O. FOR BYPASS DOORS USING DRYWALL JAMB FACING MAKE SAME AS BOTH DOORS ADDED TOGETHER	
ALL INTERIOR DOORS SIZE + 2" TO WIDTH x 82 1/2" HIGH	
R.O. POCKET DOOR (2x DOOR WIDTH + 1") x 85" HIGH	

* - DENOTES OPENING MEETS
EGRESS REQUIREMENTS.

ALL WALL DIMENSIONS ARE FACE TO FACE OF STUD
ALL INTERIOR WALLS ARE 3/4" (UNLESS NOTED)
EXHAUST BATH FANS ARE VENTED TO OUTSIDE AIR
DOOR BASH IS TO 82.75" OF CLEAR OPENING
ALL BRICK LAYOUT MEASUREMENTS ARE 4"



CONSTRUCTORS