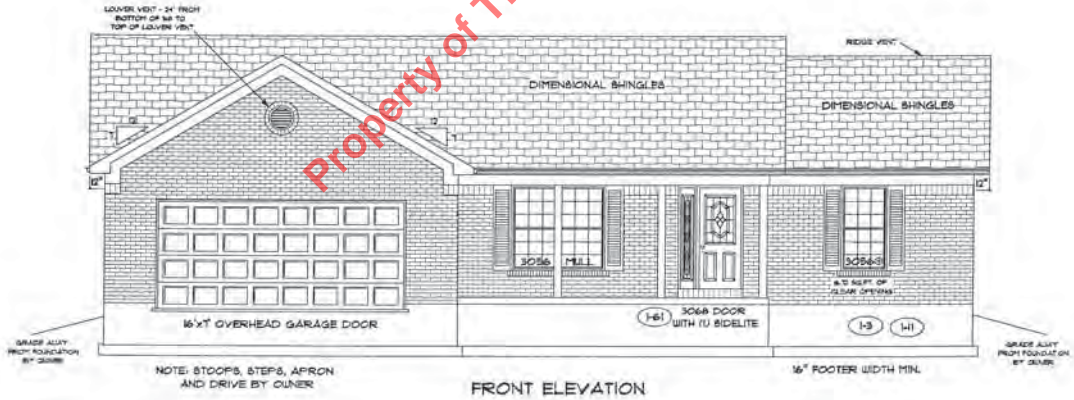


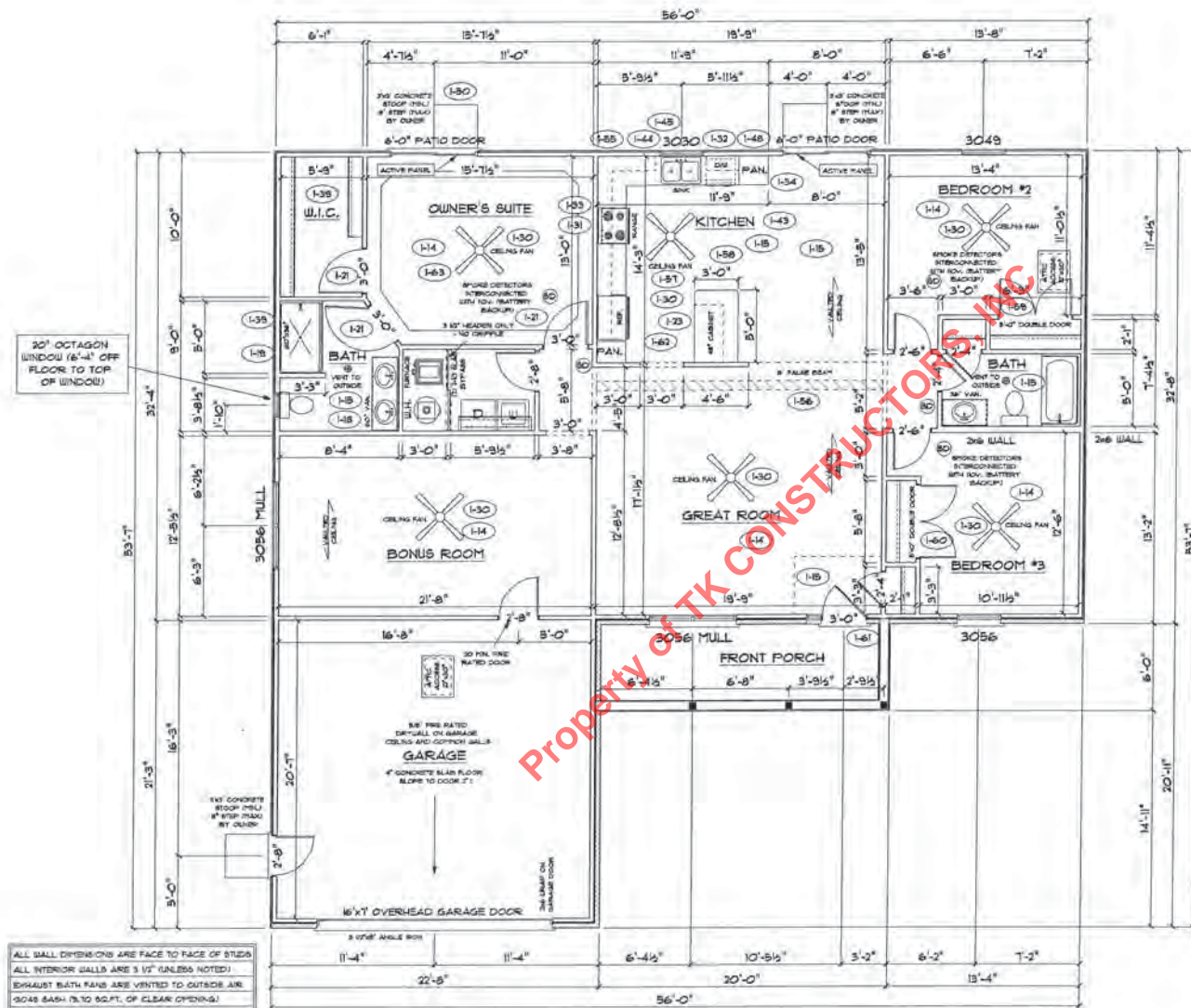
REAR ELEVATION



FRONT ELEVATION



CONSTRUCTORS



ALL WALL DIMENSIONS ARE FACE TO FACE OF STUDS  
 ALL INTERIOR WALLS ARE 3/4\"/>

FLOOR PLAN

TOTAL LIVING SQ.FT.	1,829
GARAGE	474
TOTAL SQ.FT.	2,303
EXCLUDING PORCH	120

ANDERSEN WINDOW SCHEDULE  
 - 200 SERIES -

ANDERSEN MODEL NO.	R.O. SIZE
3030	36" x 36"
3040	36" x 48"
3049	36" x 51"
3056	36" x 66"
3060	36" x 72"
3049 MULL	73" x 51"
3056 MULL	73" x 66"
3060 MULL	73" x 72"

- ANDERSEN SLIDING DOOR  
R.O. 72 3/4" x 82 1/8"
- 3'-0" FRONT DOOR  
R.O. 38 3/8" x 82 1/2"
- 3'-0" FRONT DOOR WITH (1) SIDELITE  
R.O. 51 7/8" x 82 1/2"
- 3'-0" FRONT DOOR WITH (2) SIDELITES  
R.O. 65 3/8" x 82 1/2"
- R.O. FOR BI-FOLD DOORS USING DRYWALL  
JAMB FACING + 1/4" x DOOR SIZE
- R.O. FOR BYPASS DOORS USING DRYWALL  
JAMB FACING MAKE SAME AS BOTH DOORS  
ADDED TOGETHER
- ALL INTERIOR DOORS  
SIZE + 2" TO WIDTH x 82 1/2" HIGH
- R.O. POCKET DOOR  
(2x DOOR WIDTH + 1") x 85" HIGH

\* - DENOTES OPENING HEIGHTS  
 EGRESS REQUIREMENTS