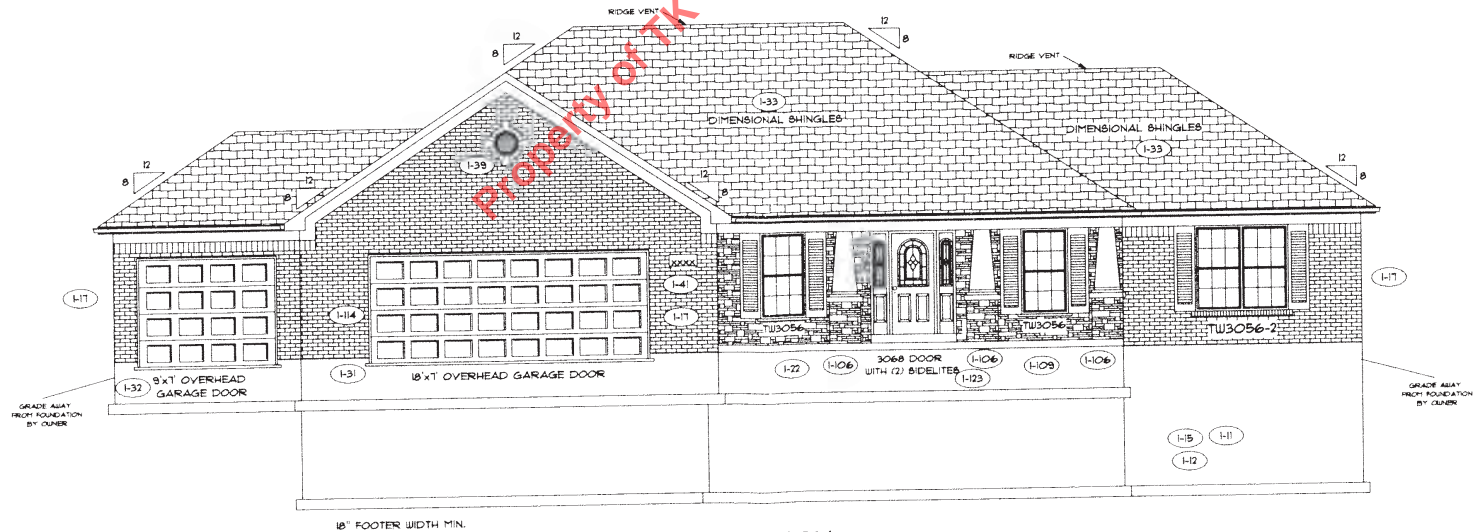


REAR ELEVATION



FRONT ELEVATION

Property of TK CONSTRUCTORS, INC

ALM  
RM



FLOOR PLAN

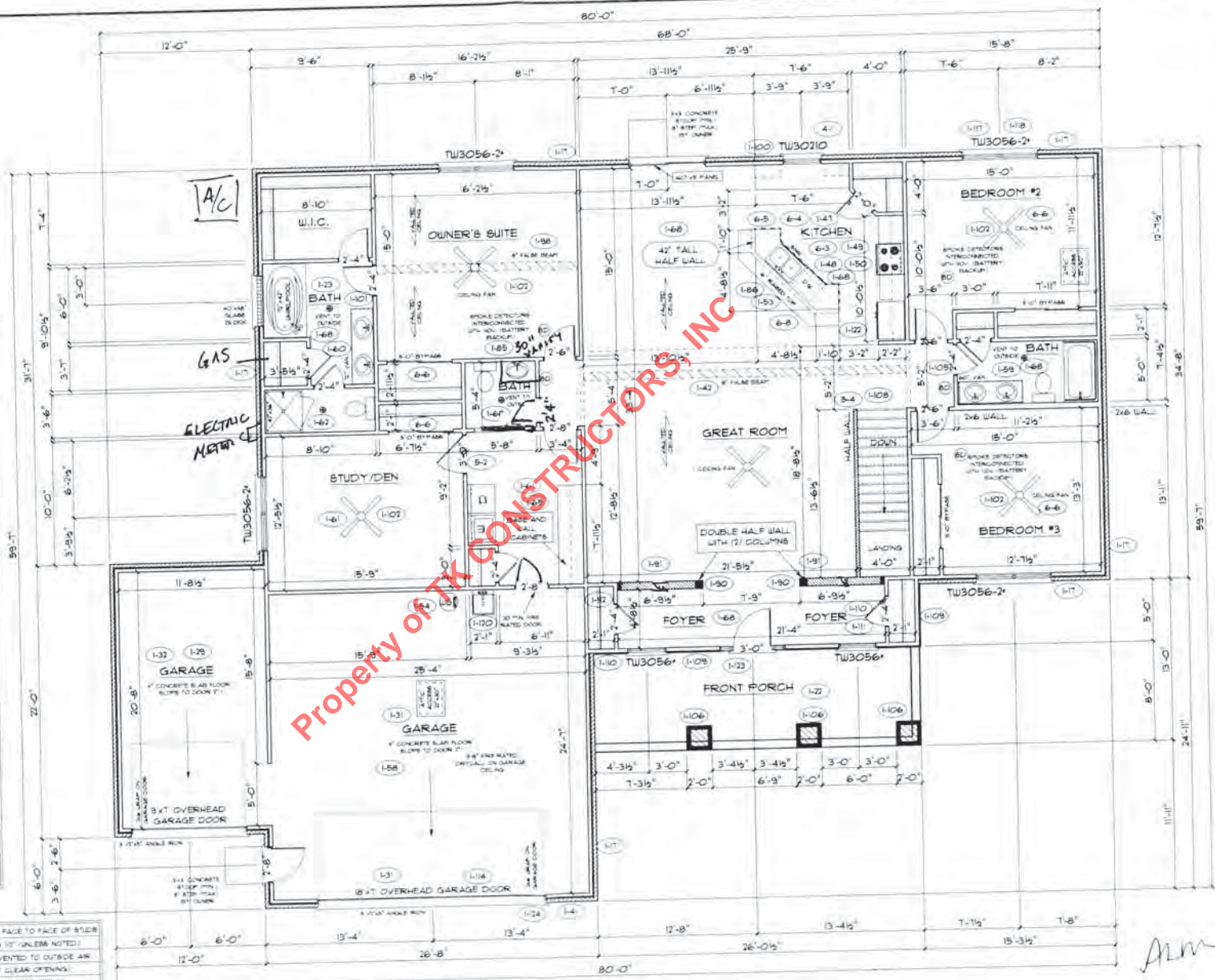
TOTAL LIVING SQ.FT.	2,490
GARAGE	933
TOTAL SQ.FT.	3,423
EXCLUDING PORCH	208

ANDERSEN WINDOW SCHEDULE  
- 400 SERIES - (1-80)

ANDERSEN MODEL NO.	R.O. SIZE
TW30210	38 1/8" x 36 7/8"
TW30310	38 1/8" x 48 7/8"
TW3046*	38 1/8" x 56 7/8"
TW3056*	38 1/8" x 68 7/8"
TW30510*	38 1/8" x 72 7/8"
TW3046-2*	76 1/8" x 56 7/8"
TW3056-2*	76 1/8" x 68 7/8"
TW30510-2*	76 1/8" x 72 7/8"

- ANDERSEN SLIDING DOOR  
R.O. 72 3/4" x 82 7/8"
- 3'-0" FRONT DOOR  
R.O. 36 3/8" x 82 1/2"
- 5'-0" FRONT DOOR WITH (1) SIDELITE  
R.O. 51 7/8" x 82 1/2"
- 3'-0" FRONT DOOR WITH (2) SIDELITES  
R.O. 65 3/8" x 82 1/2"
- R.O. FOR BI-FOLD DOORS USING DRY WALL  
JAMB FACING + 1 1/4" - DOOR SIZE x 1/8 1/2"
- R.O. FOR BY-PASS DOORS USING DRY WALL  
JAMB FACING MAKE SAME AS BOTH DOORS  
ADDED TOGETHER
- ALL INTERIOR DOORS  
SIZE + 2" TO WIDTH x 82 1/2" HIGH
- R.O. POCKET DOOR  
1/2" DOOR WIDTH + 17" x 85" HIGH
- DENOTES OPENING MEETS  
ESGSSS REQUIREMENTS

ALL WALL DIMENSIONS ARE FACE TO FACE OF BRICK  
ALL INTERIOR WALLS ARE 3/4" UNLESS NOTED  
EXHAUST BATH FANS ARE VENTED TO OUTSIDE AIR  
DOOR BASH IS TO SQ.FT. OF CLEAR OPENING  
ALL BRICK LAYOUT MEASUREMENTS ARE 4"



*Alm*  
*mm*

