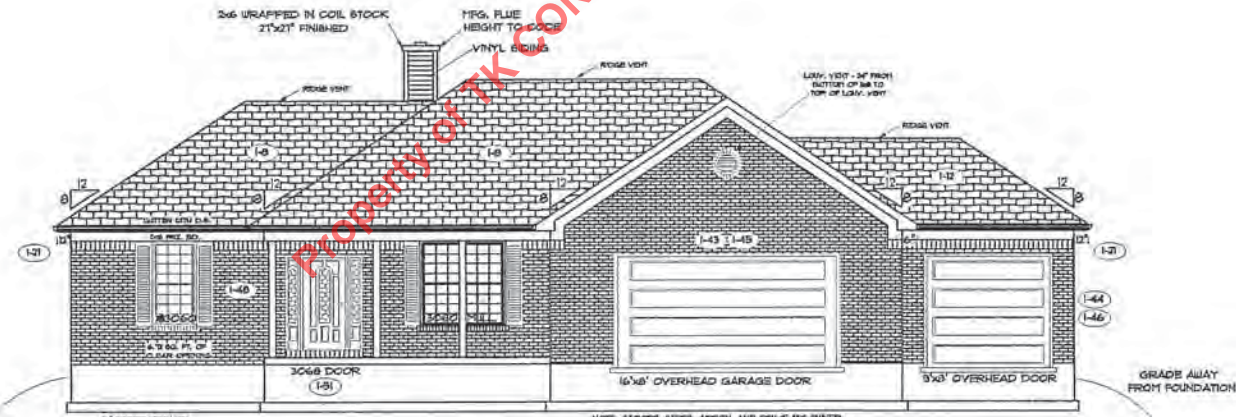
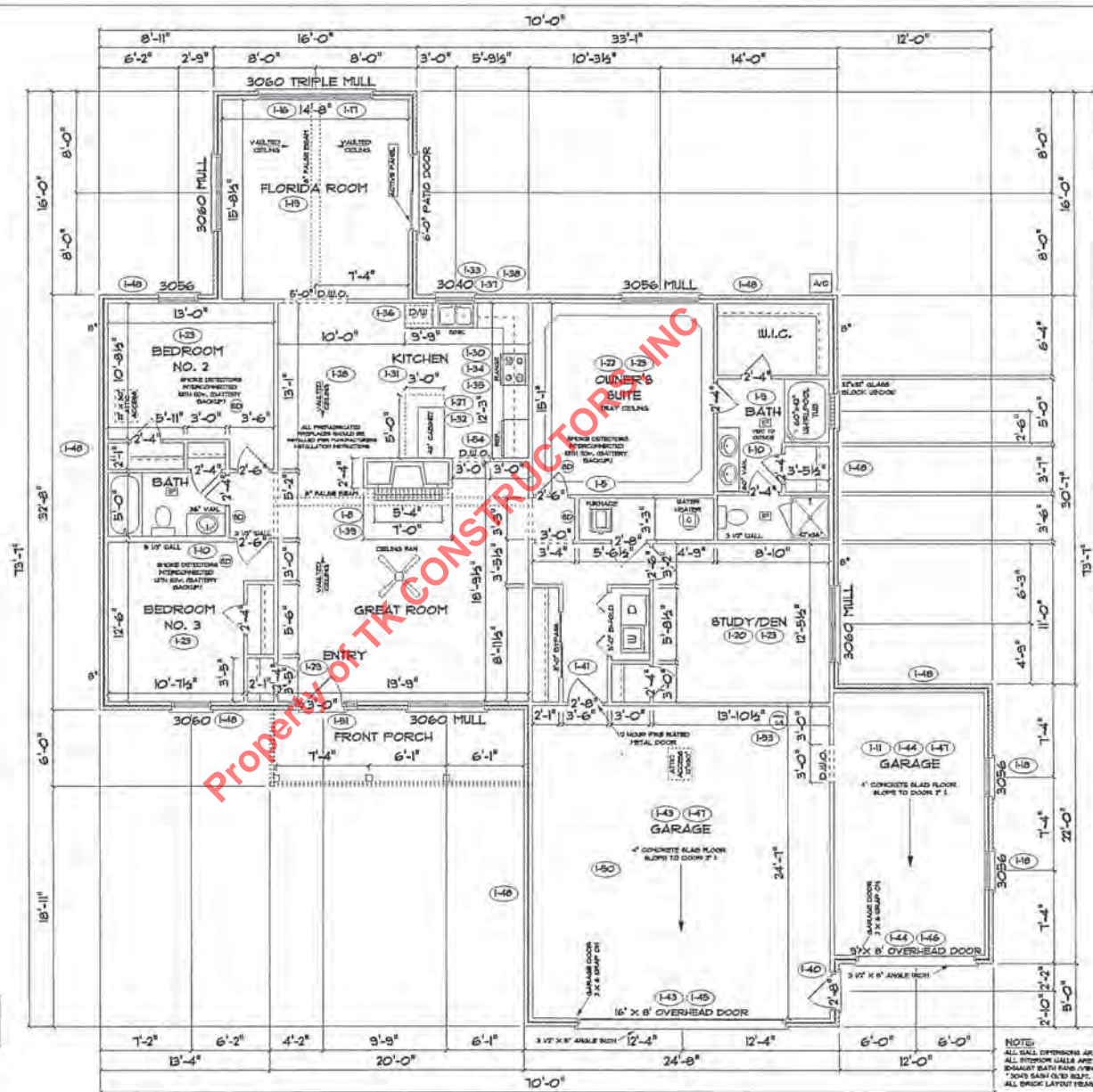




REAR ELEVATION



FRONT ELEVATION



TOTAL LIVING SPACE	2149 SQ. FT.
GARAGE	879 SQ. FT.
TOTAL SQ. FT.	3028 SQ. FT.
(EXCLUDING FRONT PORCH)	300 SQ. FT.

ANDERSEN WINDOWS	MODEL	R.O. SIZE
	3030	36" x 26"
	3048	36" x 51"
	3056	36" x 66"
	3045 MULL	13" x 51"
	3056 MULL	13" x 66"

ANDERSEN SLIDING DOOR	R.O. SIZE
	71 3/4" x 82 1/8"
3/0 FRONT DOOR	R.O. 3'-2 1/2" x 82 1/2"
3/0 FRONT DOOR WITH (U) SIDE	LIGHT R.O. 4'-3 1/2" x 82"
3/0 FRONT DOOR WITH (D) SIDE	LIGHTS R.O. 5'-5" x 82"
R.O. FOR BYFOLD DOORS USING DRY-WALL JAMB FACING IS 1 1/4" DOOR SIZE	
R.O. FOR BYPASS DOORS USING DRY-WALL JAMB FACING MAKE 6A1E AS BOTH DOORS ADDED TOGETHER	
ALL INTERIOR DOORS	SIZE + 2" TO WIDTH x 82 1/2" HIGH

9'-0" FIRST FLOOR CEILING HEIGHT
 INCLUDES 4 1/4" BASE, 3060 WINDOWS ON FRONT, AND 4" WALL CABINETS

NOTE:
 ALL WALL DIMENSIONS ARE FACE TO FACE OF STUD.
 ALL INTERIOR WALLS ARE 5 1/2" EXPOSED STUD.
 BATHS BATH FANS POINT TO OUTSIDE AIR.
 * 3045 BATH OVER BUILT, OF CLEAR OPENING.
 ALL BRICK LAYOUT REQUIREMENTS ARE 4 INCHES

FLOOR PLAN