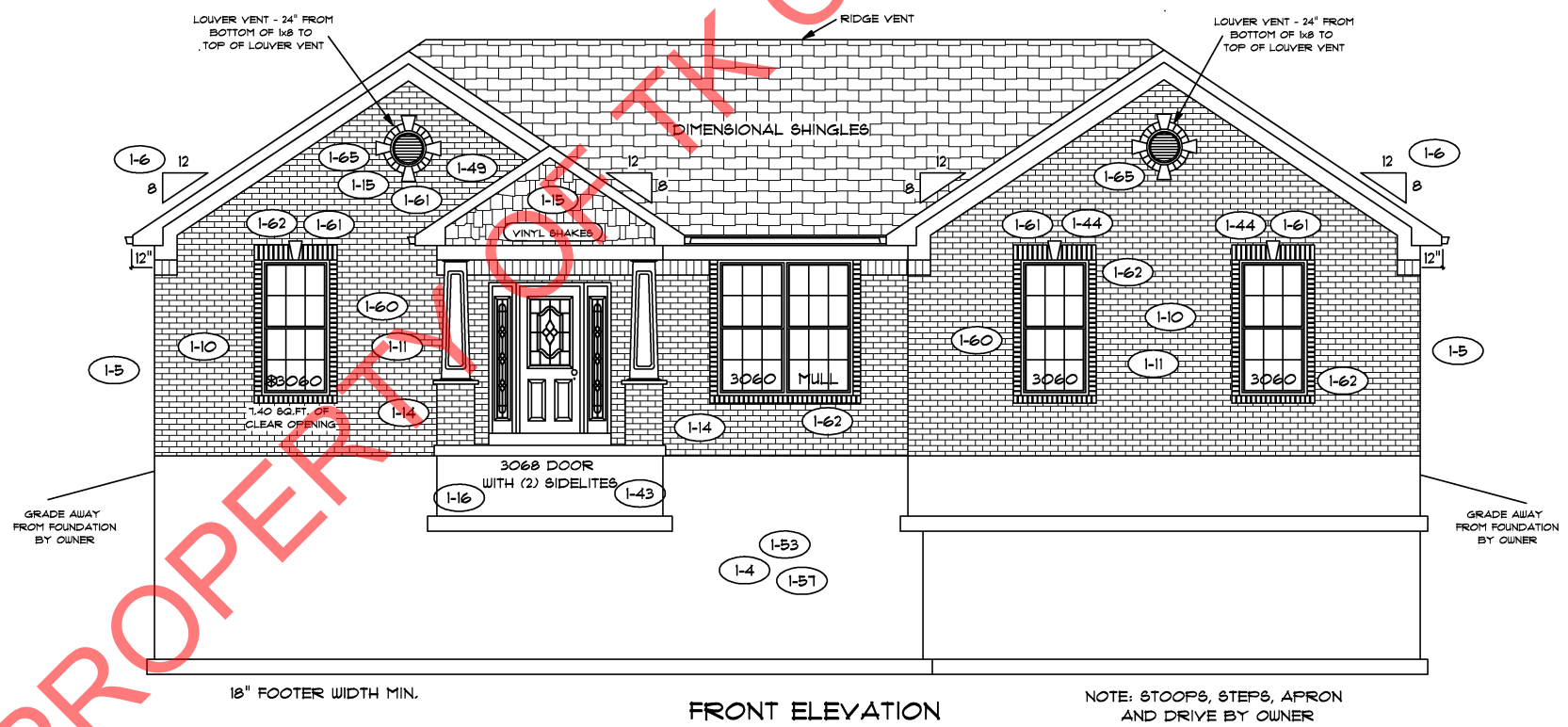


REAR ELEVATION



FRONT ELEVATION

PROPERTY OF TK CONSTRUCTORS, INC



FLOOR PLAN

TOTAL LIVING SQ.FT.	1,633
GARAGE	475
TOTAL SQ.FT.	2,108
EXCLUDING PORCH	60

ANDERSEN WINDOW SCHEDULE - 200 SERIES -

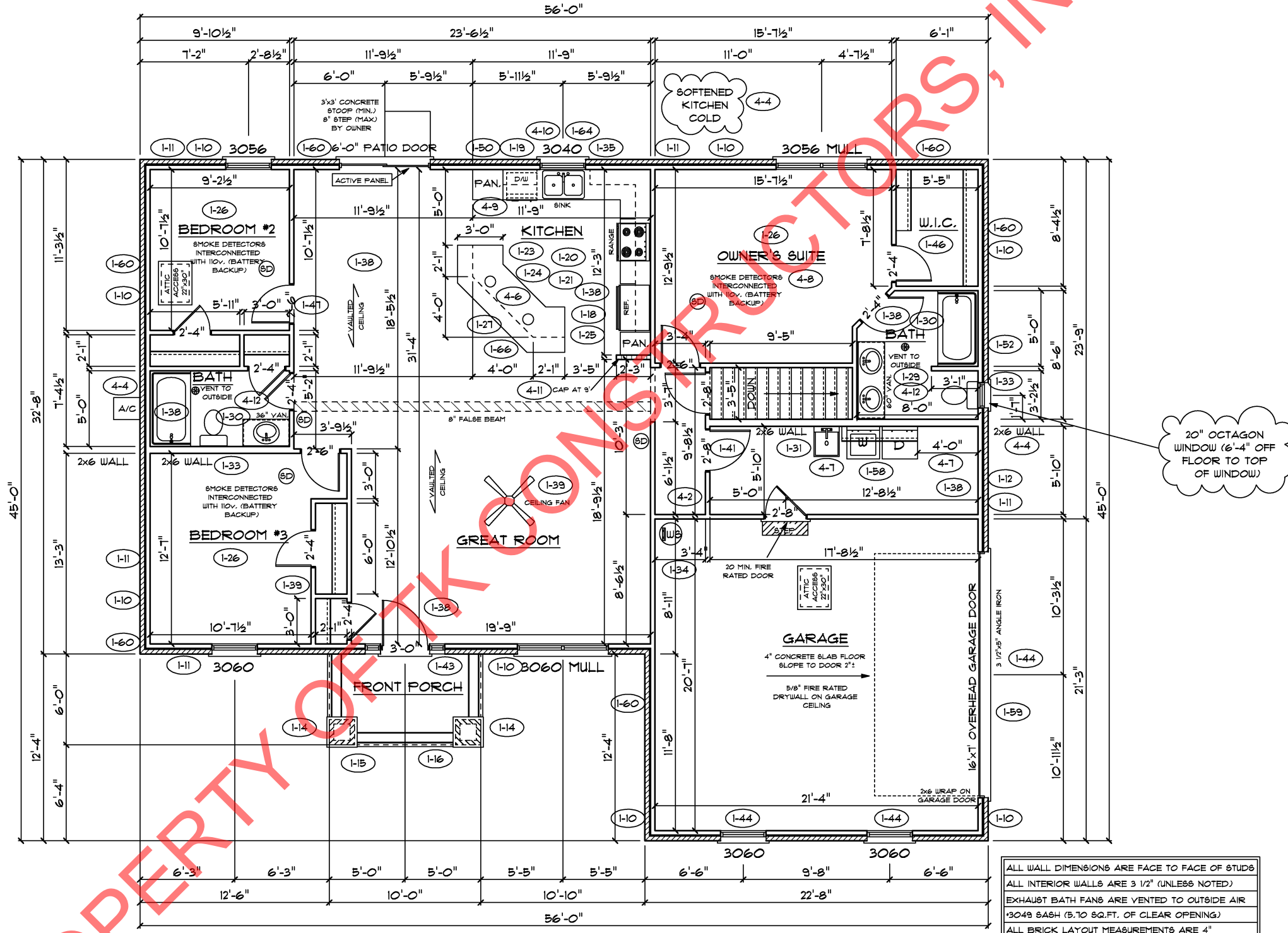
ANDERSEN MODEL NO.	R.O. SIZE
3030	36" x 36"
3040	36" x 48"
3049*	36" x 57"
3056*	36" x 66"
3060*	36" x 72"
3049 MULL*	73" x 57"
3056 MULL*	73" x 66"
3060 MULL*	73" x 72"
ANDERSEN SLIDING DOOR R.O. 72 3/4" x 82 1/8"	
3'-0" FRONT DOOR R.O. 38 3/8" x 82 1/2"	
3'-0" FRONT DOOR WITH (1) SIDELITE R.O. 51 7/8" x 82 1/2"	
3'-0" FRONT DOOR WITH (2) SIDELITES R.O. 65 3/8" x 82 1/2"	
R.O. FOR BI-FOLD DOORS USING DRYWALL JAMB FACING = 1 1/4" + DOOR SIZE x (81 1/2")	
R.O. FOR BYPASS DOORS USING DRYWALL JAMB FACING MAKE SAME AS BOTH DOORS ADDED TOGETHER	
ALL INTERIOR DOORS SIZE + 2" TO WIDTH x 82 1/2" HIGH	
R.O. POCKET DOOR (2x DOOR WIDTH + 1") x 85" HIGH	

* - DENOTES OPENING MEETS EGRESS REQUIREMENTS

9'-0" FIRST FLOOR CEILING HEIGHT (1-5)

INCLUDES:

1.	4 1/4" BASEBOARDS IN LIEU OF 3 1/4"
2.	3060 WINDOWS IN LIEU OF 3056 WINDOWS
3.	3056 WINDOWS IN LIEU OF 3049 WINDOWS
4.	DRYWALL WRAPPED OPENINGS 12" TALLER
5.	30" KITCHEN CABINETS STANDARD
6.	16'x7' GARAGE DOOR STANDARD



ALL WALL DIMENSIONS ARE FACE TO FACE OF STUDS
 ALL INTERIOR WALLS ARE 3 1/2" (UNLESS NOTED)
 EXHAUST BATH FANS ARE VENTED TO OUTSIDE AIR
 *3049 BASH (5.70 SQ.FT. OF CLEAR OPENING)
 ALL BRICK LAYOUT MEASUREMENTS ARE 4"

PROPERTY OF TK CONSTRUCTORS, INC

