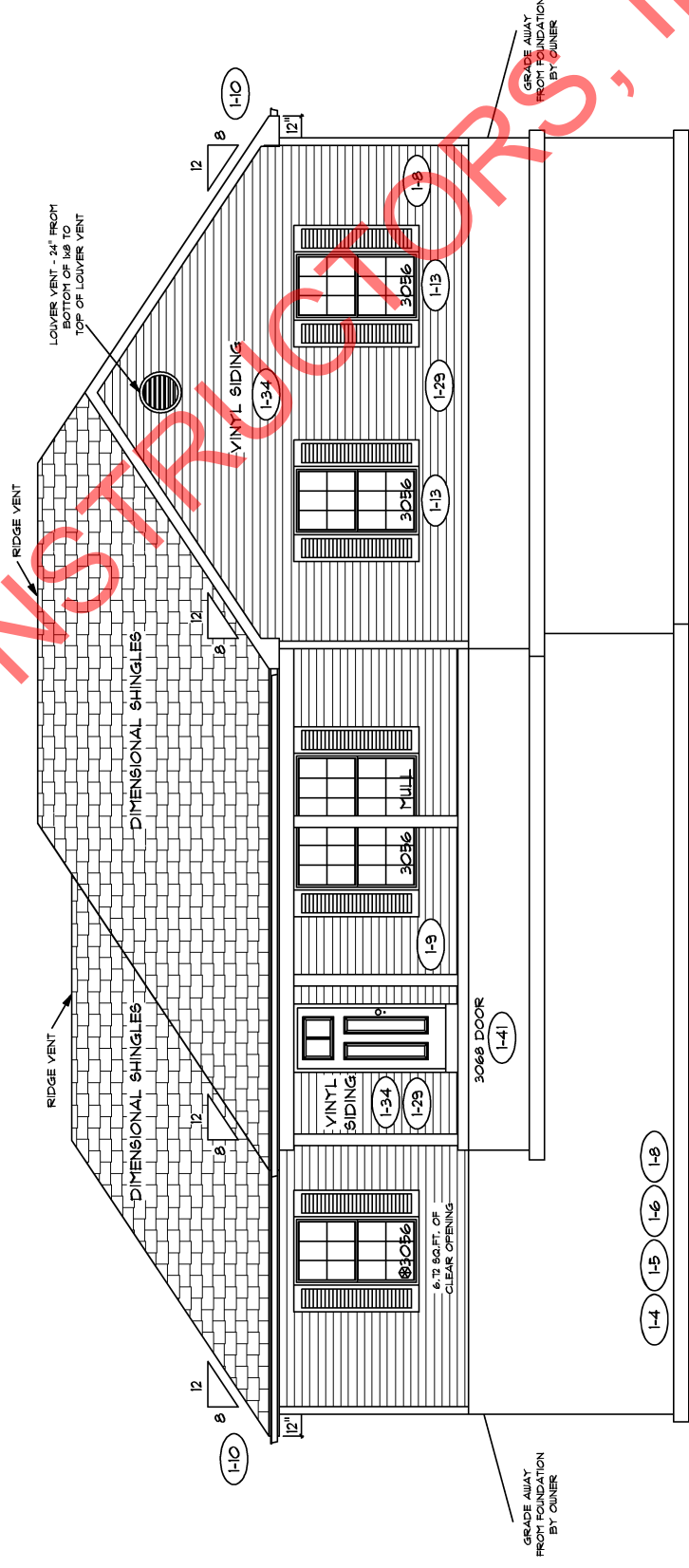


REAR ELEVATION

NOTE: STOOPS, STEPS, APRON AND DRIVE BY OWNER

18" FOOTER WIDTH MIN.



FRONT ELEVATION

NOTE: STOOPS, STEPS, APRON AND DRIVE BY OWNER

18" FOOTER WIDTH MIN.

PROPERTY OF TK CONSTRUCTORS, INC

FLOOR PLAN

TOTAL LIVING SQ.FT.	1,619
GARAGE	518
TOTAL SQ.FT.	2,137
EXCLUDING PORCH	132

**ANDERSEN WINDOW SCHEDULE
- 200 SERIES -**

ANDERSEN MODEL NO.	R.O. SIZE
3030	36" x 36"
3040	36" x 48"
3049*	36" x 57"
3056*	36" x 66"
3060*	36" x 72"
3049 MULL*	73" x 57"
3056 MULL*	73" x 66"
3060 MULL*	73" x 72"

ANDERSEN SLIDING DOOR
R.O. 72 3/4" x 82 1/8"

3'-0" FRONT DOOR
R.O. 38 3/8" x 82 1/2"

3'-0" FRONT DOOR WITH (1) SIDELITE
R.O. 51 7/8" x 82 1/2"

3'-0" FRONT DOOR WITH (2) SIDELITES
R.O. 65 3/8" x 82 1/2"

R.O. FOR BI-FOLD DOORS USING DRYWALL
JAMB FACING = 1 1/4" + DOOR SIZE x (81 1/2")

R.O. FOR BYPASS DOORS USING DRYWALL
JAMB FACING MAKE SAME AS BOTH DOORS
ADDED TOGETHER

ALL INTERIOR DOORS
SIZE + 2" TO WIDTH x 82 1/2" HIGH

R.O. POCKET DOOR
(2x DOOR WIDTH + 1") x 85" HIGH

* - DENOTES OPENING MEETS
EGRESS REQUIREMENTS

ALL WALL DIMENSIONS ARE FACE TO FACE OF STUDS
ALL INTERIOR WALLS ARE 3 1/2" (UNLESS NOTED)
EXHAUST BATH FANS ARE VENTED TO OUTSIDE AIR
*3049 SASH (5.70 SQ.FT. OF CLEAR OPENING)
ALL BRICK LAYOUT MEASUREMENTS ARE 4"

