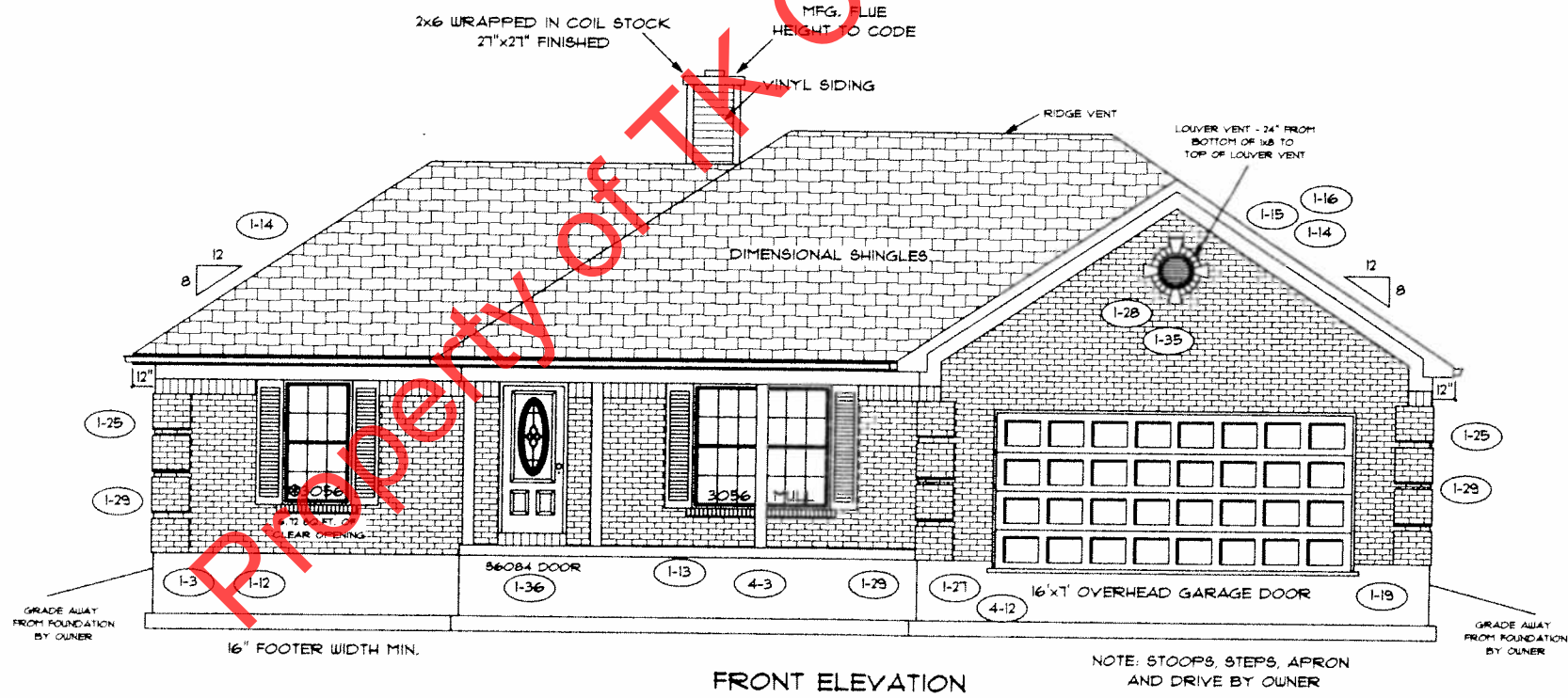


Marked up 2-26-14



PAGE NO.:

10

ADDENDUM 1.4

VER: 091912

DRAWING BY: RLC/SES

1/8" = 1'



DATE: February 27, 2014

JOB NO.: 210-14-0408

TK CONSTRUCTORS
MONTGOMERY

1-23 1-11
FLOOR PLAN

TOTAL LIVING SQ.FT.	1,543
GARAGE	518
TOTAL SQ.FT.	2,061
EXCLUDING PORCH	120

ANDERSEN WINDOW SCHEDULE
- 200 SERIES - 4-6

ANDERSEN MODEL NO.	R.O. SIZE
3030	36" x 36"
3040	36" x 48"
3049*	36" x 51"
3056*	36" x 66"
3060*	36" x 72"
3049 MULL*	73" x 51"
3056 MULL*	73" x 66"
3060 MULL*	73" x 72"

ANDERSEN SLIDING DOOR R.O. 72 3/4" x 82 7/8"
3'-0" FRONT DOOR R.O. 38 3/8" x 82 1/2"
3'-0" FRONT DOOR WITH (1) SIDELITE R.O. 51 7/8" x 82 1/2"
3'-0" FRONT DOOR WITH (2) SIDELITES R.O. 65 3/8" x 82 1/2"
R.O. FOR BI-FOLD DOORS USING DRYWALL JAMB FACING + 1 1/4" + DOOR SIZE x (81 1/2")
R.O. FOR BYPASS DOORS USING DRYWALL JAMB FACING MAKE SAME AS BOTH DOORS ADDED TOGETHER
ALL INTERIOR DOORS SIZE + 2" TO WIDTH x 82 1/2" HIGH
R.O. POCKET DOOR (2x DOOR WIDTH + 1") x 85" HIGH

* - DENOTES OPENING MEETS
EGRESS REQUIREMENTS

