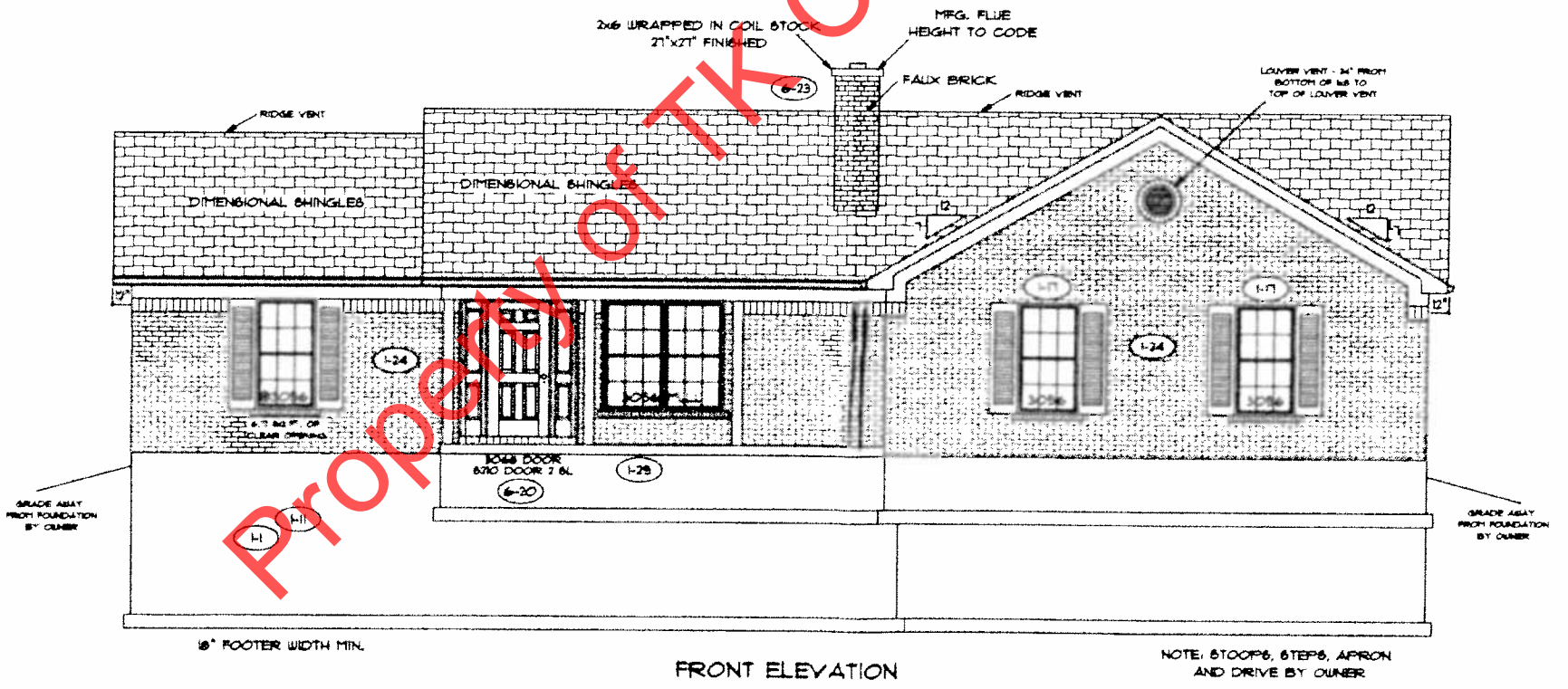
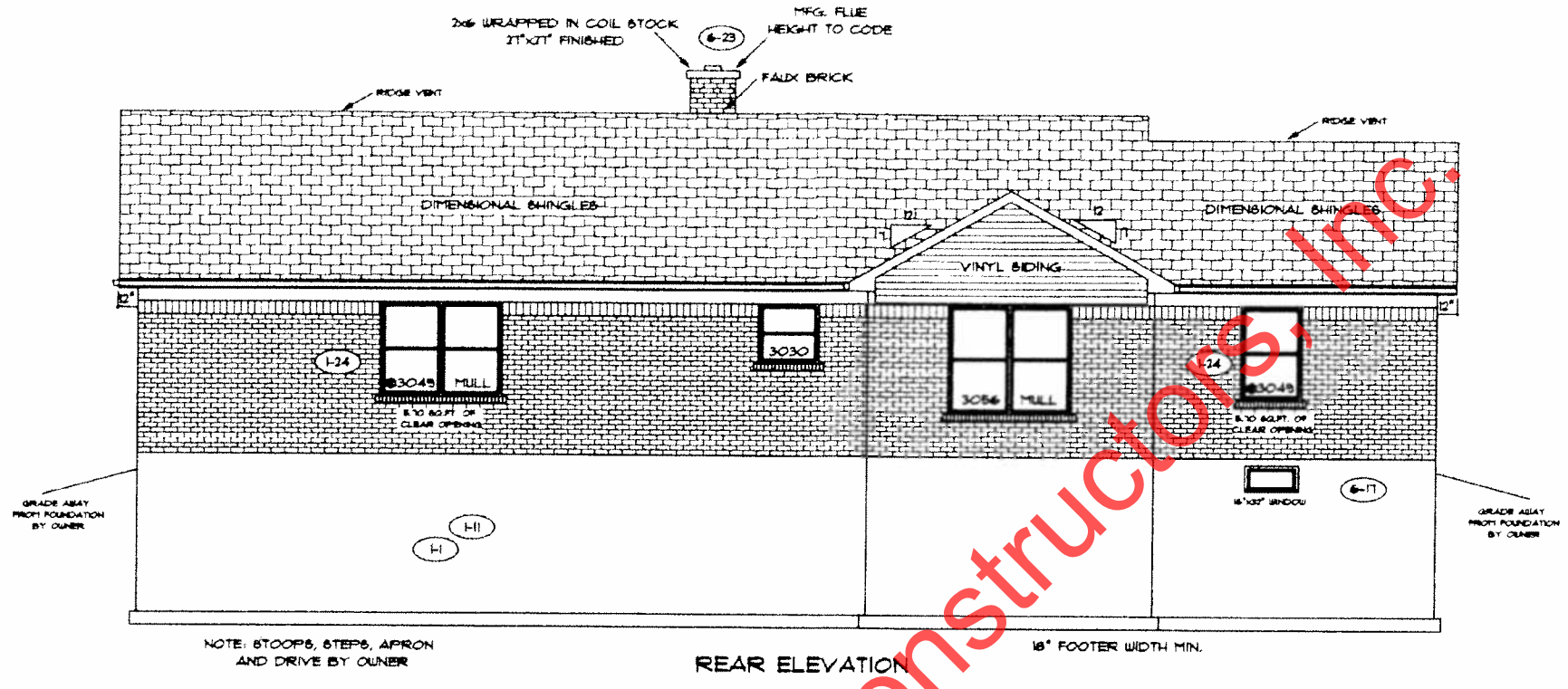


marked up 6-4-14



PAGE NO.: **1B**

ADDENDUM 1, 5, 6

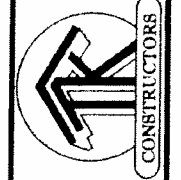
VER: 092112

DRAWING BY: SES, RLC

1/8" = 1'

DATE: April 22, 2014

JOB NO.: 212-14-0209



TK CONSTRUCTORS

MEMPHIS

K.B
CB

SMOOTH CEILING
THROUGHOUT

FLOOR PLAN

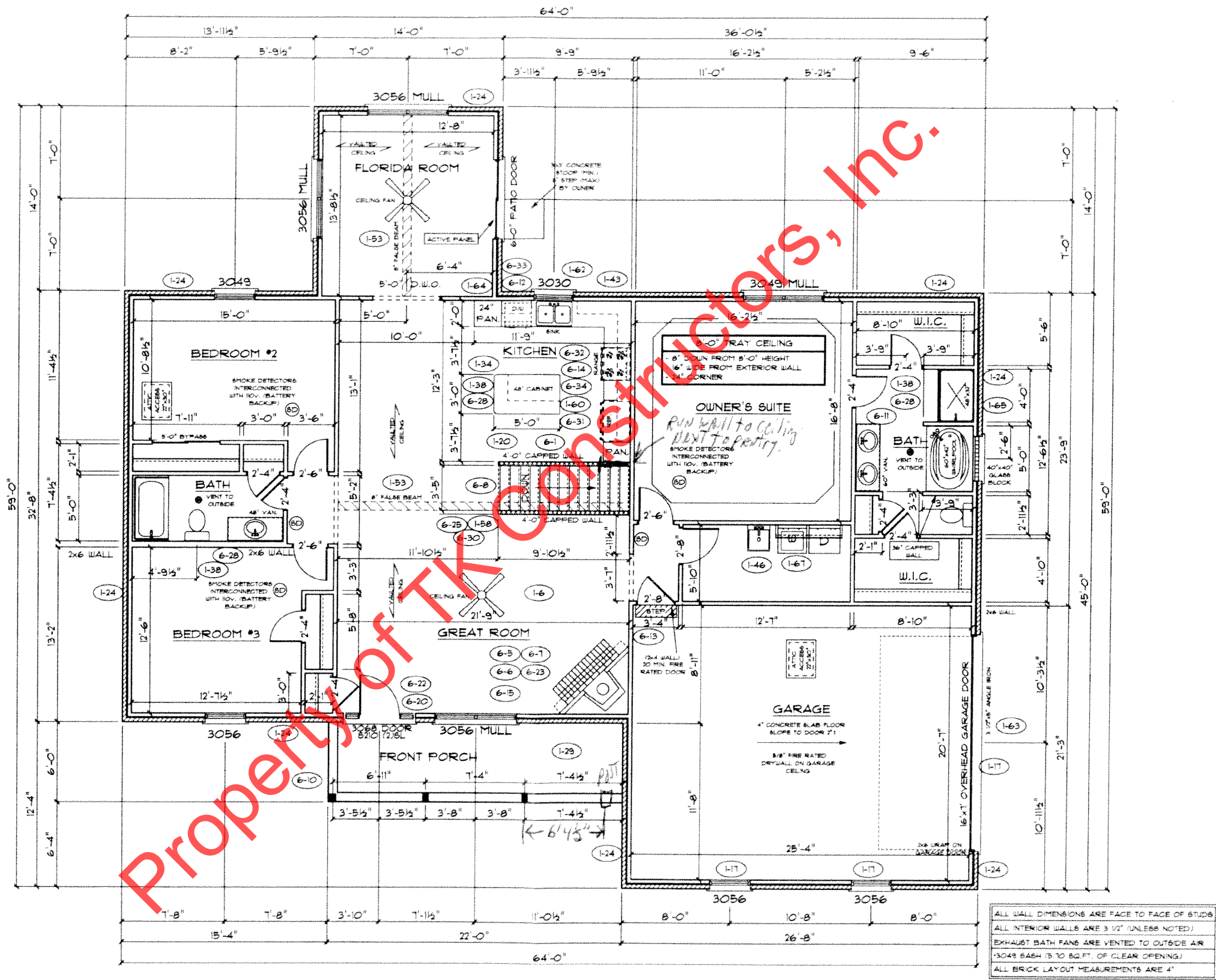
TOTAL LIVING SQ.FT.	2,055
GARAGE	560
TOTAL SQ.FT.	2,615
EXCLUDING PORCH	132

ANDERSEN WINDOW SCHEDULE
- 200 SERIES -

ANDERSEN MODEL NO.	R.O. SIZE
3030	36" x 36"
3040	36" x 48"
3049*	36" x 57"
3056*	36" x 66"
3060*	36" x 72"
3049 MULL*	73" x 57"
3056 MULL*	73" x 66"
3060 MULL*	73" x 72"

ANDERSEN SLIDING DOOR R.O. 72 3/4" x 82 1/8"
3'-0" FRONT DOOR R.O. 38 3/8" x 82 1/2"
3'-0" FRONT DOOR WITH (1) SIDELITE R.O. 51 1/8" x 82 1/2"
3'-0" FRONT DOOR WITH (2) SIDELITES R.O. 65 3/8" x 82 1/2"
R.O. FOR BI-FOLD DOORS USING DRYWALL JAMB FACING = 1 1/4" + DOOR SIZE x (81 1/2")
R.O. FOR BYPASS DOORS USING DRYWALL JAMB FACING MAKE SAME AS BOTH DOORS ADDED TOGETHER
ALL INTERIOR DOORS SIZE + 2" TO WIDTH x 82 1/2" HIGH
R.O. POCKET DOOR (2x DOOR WIDTH + 1") x 85" HIGH

* - DENOTES OPENING MEETS
EGRESS REQUIREMENTS



ALL WALL DIMENSIONS ARE FACE TO FACE OF STUDS
ALL INTERIOR WALLS ARE 3/2" (UNLESS NOTED)
EXHAUST BATH FANS ARE VENTED TO OUTSIDE AIR
3049 BASH IS TO SQ.FT. OF CLEAR OPENING
ALL BRICK LAYOUT MEASUREMENTS ARE 4"



KB
AB