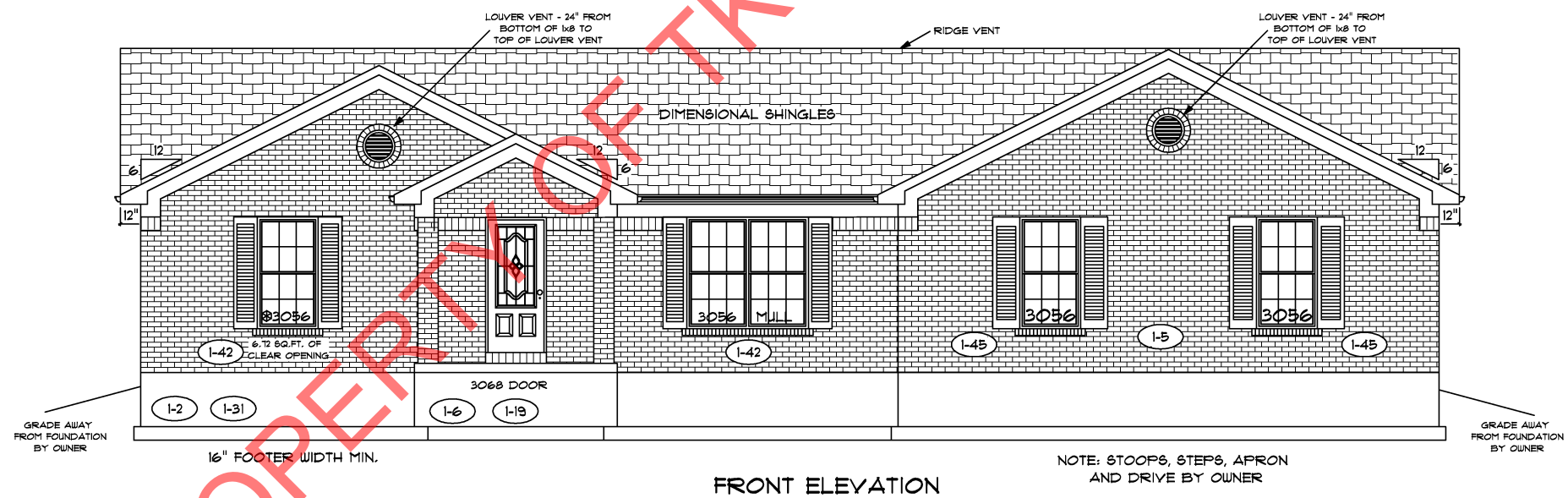
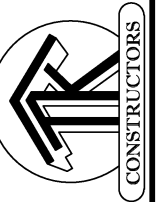


REAR ELEVATION



FRONT ELEVATION

PROPERTY OF TK CONSTRUCTORS, INC



FLOOR PLAN

| | |
|---------------------|-------|
| TOTAL LIVING SQ.FT. | 2,055 |
| GARAGE | 666 |
| TOTAL SQ.FT. | 2,721 |
| EXCLUDING PORCH | 60 |

ANDERSEN WINDOW SCHEDULE - 200 SERIES - (1-42)

| ANDERSEN MODEL NO. | R.O. SIZE |
|--------------------|-----------|
| 3030 | 36" x 36" |
| 3040 | 36" x 48" |
| 3049* | 36" x 57" |
| 3056* | 36" x 66" |
| 3060* | 36" x 72" |
| 3049 MULL* | 73" x 57" |
| 3056 MULL* | 73" x 66" |
| 3060 MULL* | 73" x 72" |

| |
|--|
| ANDERSEN SLIDING DOOR R.O. 72 3/4" x 82 1/8" |
| 3'-0" FRONT DOOR R.O. 38 3/8" x 82 1/2" |
| 3'-0" FRONT DOOR WITH (1) SIDELITE R.O. 51 7/8" x 82 1/2" |
| 3'-0" FRONT DOOR WITH (2) SIDELITES R.O. 65 3/8" x 82 1/2" |
| R.O. FOR BI-FOLD DOORS USING DRYWALL JAMB FACING = 1 1/4" + DOOR SIZE x (81 1/2") |
| R.O. FOR BYPASS DOORS USING DRYWALL JAMB FACING MAKE SAME AS BOTH DOORS ADDED TOGETHER |
| ALL INTERIOR DOORS SIZE + 2" TO WIDTH x 82 1/2" HIGH |
| R.O. POCKET DOOR (2x DOOR WIDTH + 1") x 85" HIGH |

* - DENOTES OPENING MEETS
EGRESS REQUIREMENTS

ALL WALL DIMENSIONS ARE FACE TO FACE OF STUDS
ALL INTERIOR WALLS ARE 3 1/2" (UNLESS NOTED)
EXHAUST BATH FANS ARE VENTED TO OUTSIDE AIR
13049 SASH (5.70 SQ.FT. OF CLEAR OPENING)
ALL BRICK LAYOUT MEASUREMENTS ARE 4"

