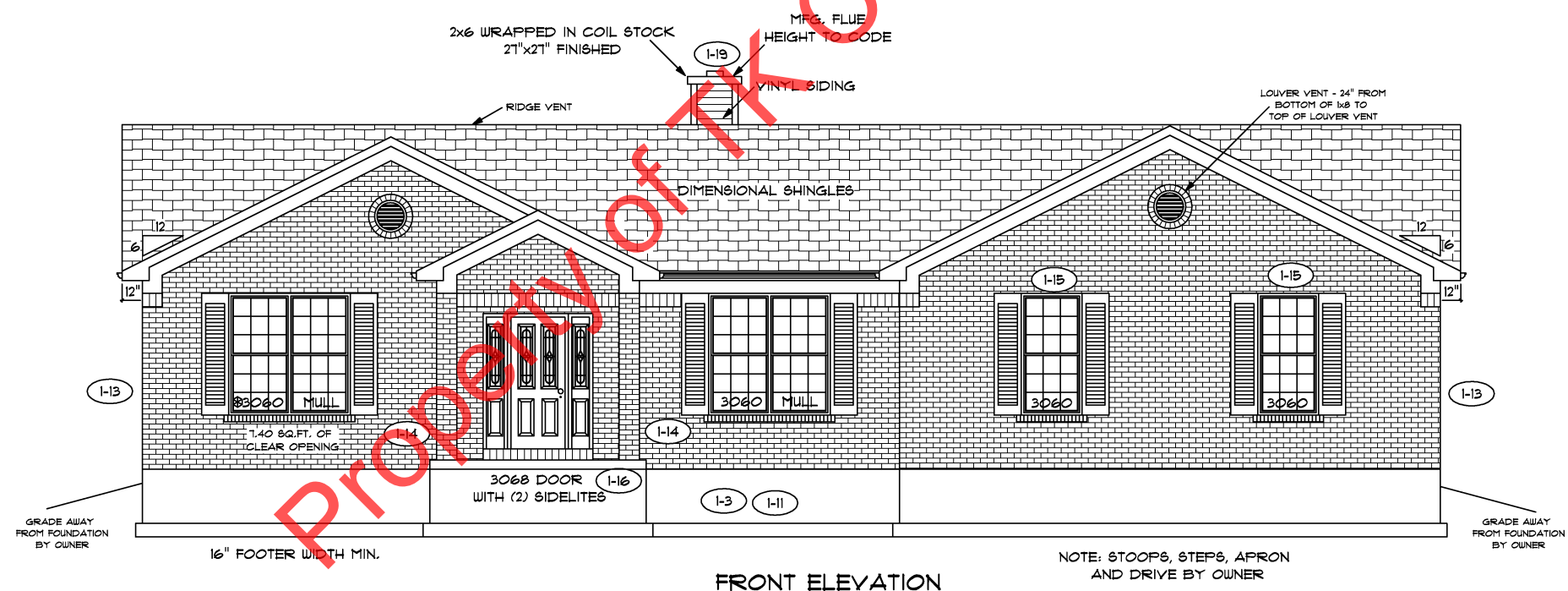


REAR ELEVATION



FRONT ELEVATION



FLOOR PLAN

TOTAL LIVING SQ.FT.	2,167
GARAGE	560
TOTAL SQ.FT.	2,727
EXCLUDING PORCH	60

ANDERSEN WINDOW SCHEDULE - 200 SERIES -

ANDERSEN MODEL NO.	R.O. SIZE
3030	36" x 36"
3040	36" x 48"
3049*	36" x 51"
3056*	36" x 66"
3060*	36" x 72"
3049 MULL*	73" x 51"
3056 MULL*	73" x 66"
3060 MULL*	73" x 72"

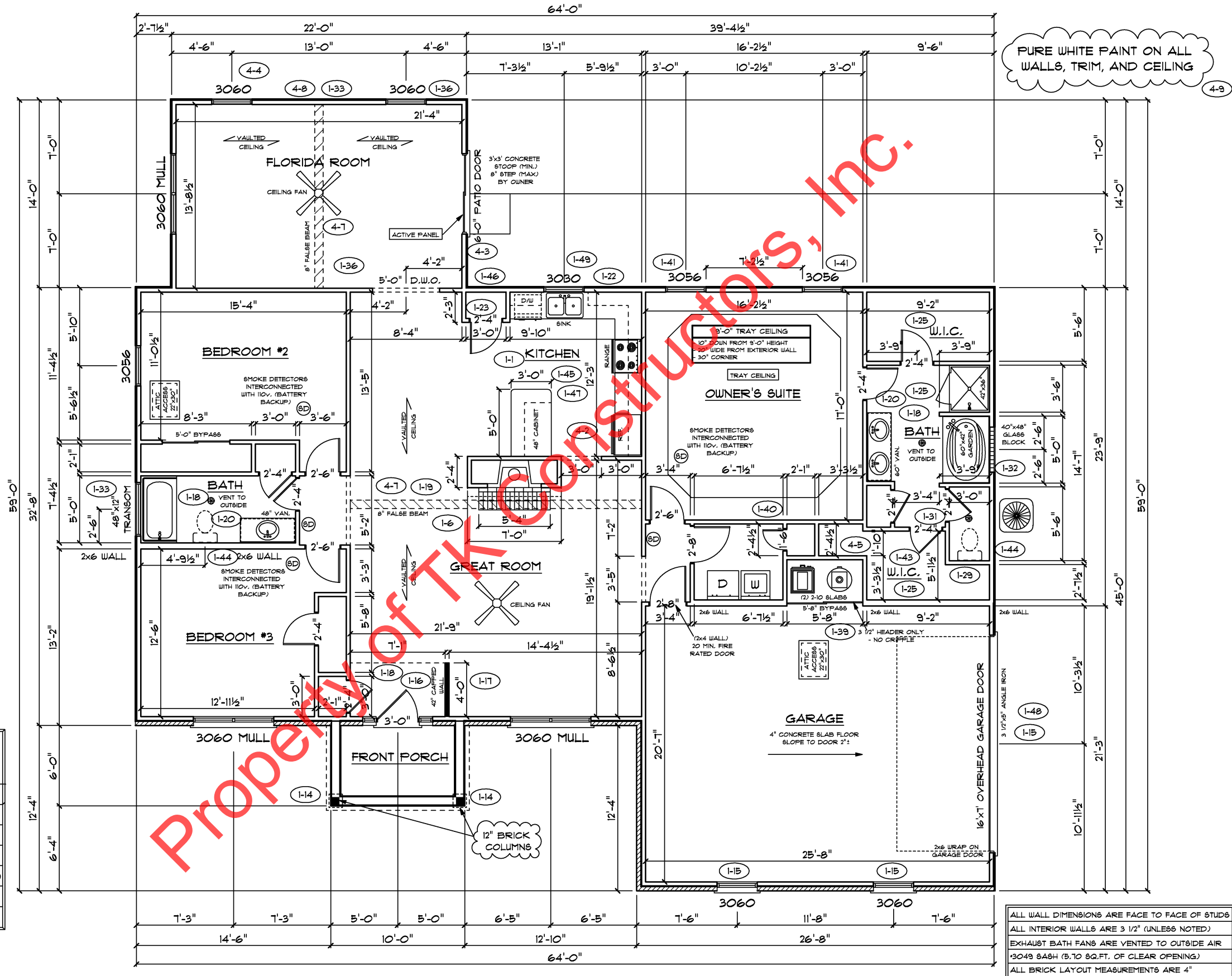
- ANDERSEN SLIDING DOOR
R.O. 72 3/4" x 82 1/8"
- 3'-0" FRONT DOOR
R.O. 38 3/8" x 82 1/2"
- 3'-0" FRONT DOOR WITH (1) SIDELITE
R.O. 51 1/8" x 82 1/2"
- 3'-0" FRONT DOOR WITH (2) SIDELITES
R.O. 65 3/8" x 82 1/2"
- R.O. FOR BI-FOLD DOORS USING DRYWALL
JAMB FACING = 1 1/4" + DOOR SIZE x (81 1/2")
- R.O. FOR BYPASS DOORS USING DRYWALL
JAMB FACING MAKE SAME AS BOTH DOORS
ADDED TOGETHER
- ALL INTERIOR DOORS
SIZE + 2" TO WIDTH x 82 1/2" HIGH
- R.O. POCKET DOOR
(2x DOOR WIDTH + 1") x 85" HIGH

* - DENOTES OPENING MEETS
EGRESS REQUIREMENTS

**9'-0" FIRST FLOOR
CEILING HEIGHT (I-13)**

INCLUDES:

- 4 1/4" BASEBOARDS IN LIEU OF 3 1/4"
- 3060 WINDOWS IN LIEU OF 3056 WINDOWS
- 3056 WINDOWS IN LIEU OF 3049 WINDOWS
- DRYWALL WRAPPED OPENINGS 1'-6" TALL (I-34)
- 30" KITCHEN CABINETS STANDARD
- 16'xT' GARAGE DOOR STANDARD



ALL WALL DIMENSIONS ARE FACE TO FACE OF STUDS
ALL INTERIOR WALLS ARE 3/2" (UNLESS NOTED)
EXHAUST BATH FANS ARE VENTED TO OUTSIDE AIR
13049 BATH (5.10 SQ.FT. OF CLEAR OPENING)
ALL BRICK LAYOUT MEASUREMENTS ARE 4"

