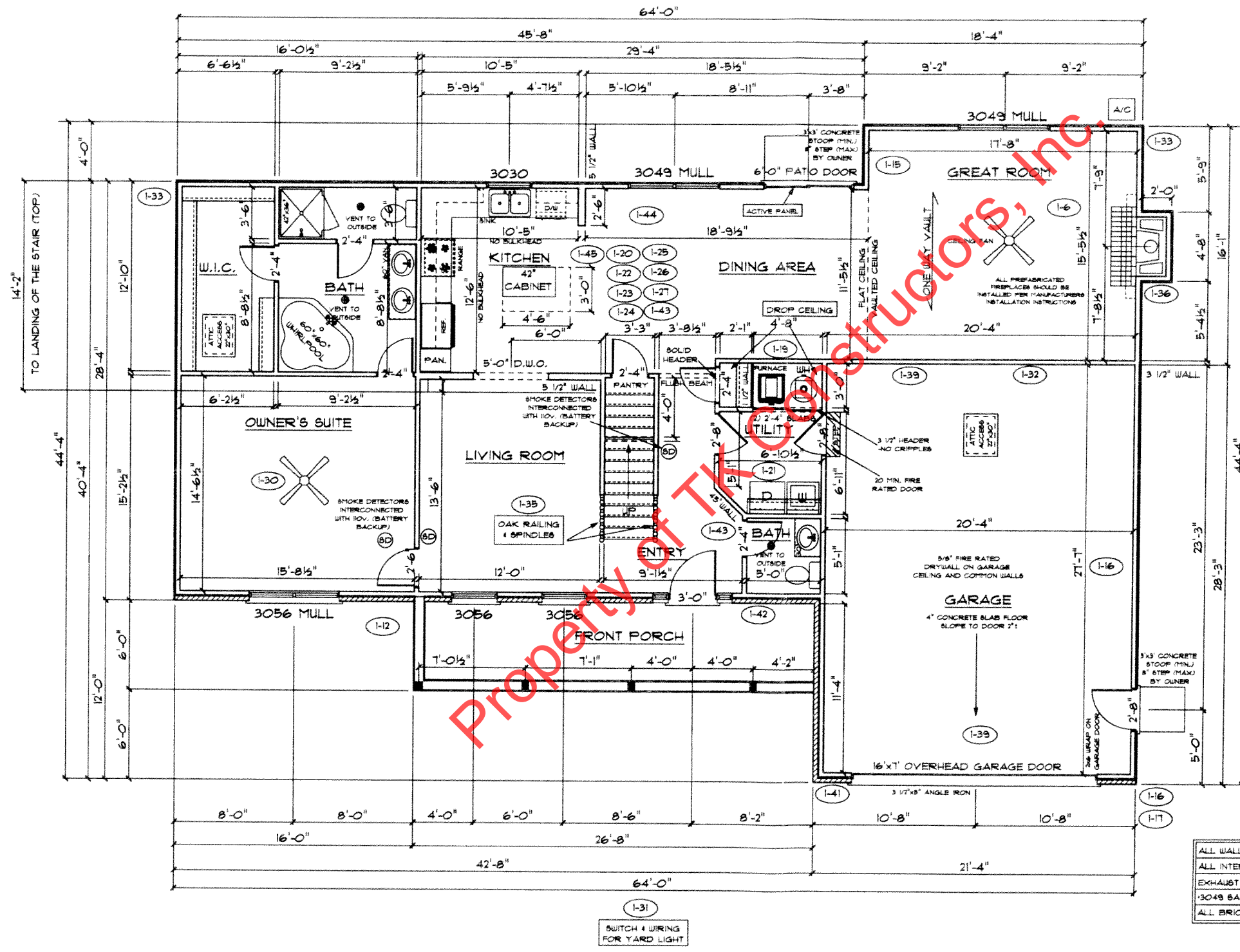




FRONT ELEVATION

NOTE: STOOPS, STEPS, APRON AND DRIVE BY OWNER

*PM*



FLOOR PLAN

FIRST FLOOR PLAN

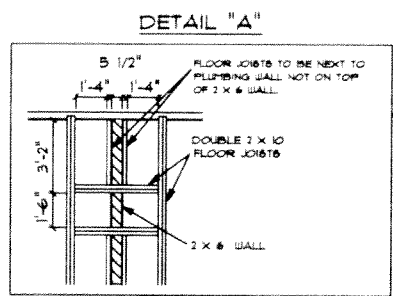
**ANDERSEN WINDOW SCHEDULE - 200 SERIES -**

ANDERSEN MODEL NO.	R.O. SIZE
3030	36" x 36"
3040	36" x 48"
3049*	36" x 57"
3056*	36" x 66"
3060*	36" x 72"
3049 MULL*	73" x 57"
3056 MULL*	73" x 66"
3060 MULL*	73" x 72"
ANDERSEN SLIDING DOOR R.O. 72 3/4" x 82 1/8"	
3'-0" FRONT DOOR R.O. 38 3/8" x 82 1/2"	
3'-0" FRONT DOOR WITH (1) SIDELITE R.O. 51 7/8" x 82 1/2"	
3'-0" FRONT DOOR WITH (2) SIDELITES R.O. 65 3/8" x 82 1/2"	
R.O. FOR BI-FOLD DOORS USING DRYWALL JAMB FACING + 1 1/4" + DOOR SIZE x (81 1/2")	
R.O. FOR BYPASS DOORS USING DRYWALL JAMB FACING MAKE SAME AS BOTH DOORS ADDED TOGETHER	
ALL INTERIOR DOORS SIZE + 2" TO WIDTH x 82 1/2" HIGH	
R.O. POCKET DOOR (2x DOOR WIDTH + 1") x 85" HIGH	

\* - DENOTES OPENING MEETS EGRESS REQUIREMENTS

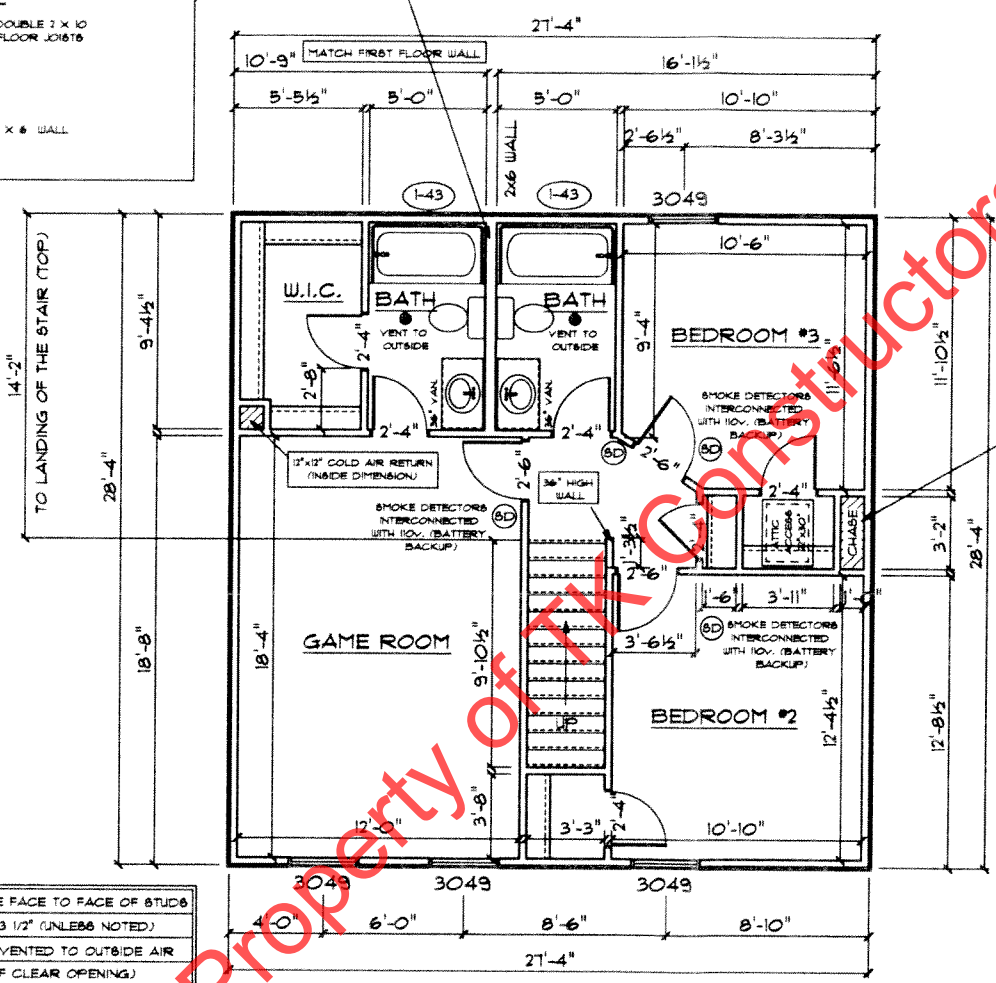
ALL WALL DIMENSIONS ARE FACE TO FACE OF STUDS  
 ALL INTERIOR WALLS ARE 3 1/2" (UNLESS NOTED)  
 EXHAUST BATH FANS ARE VENTED TO OUTSIDE AIR  
 \*3049 SASH (8.70 SQ.FT. OF CLEAR OPENING)  
 ALL BRICK LAYOUT MEASUREMENTS ARE 4"

*Rm*



SEE DETAIL "A" FOR FLOOR JOIST LAYOUT

ALL WALL DIMENSIONS ARE FACE TO FACE OF STUDS  
 ALL INTERIOR WALLS ARE 3 1/2" (UNLESS NOTED)  
 EXHAUST BATH FANS ARE VENTED TO OUTSIDE AIR  
 \*3049 SASH (3 TO SQ.FT. OF CLEAR OPENING)  
 ALL BRICK LAYOUT MEASUREMENTS ARE 4"



SECOND FLOOR PLAN

First Floor Sq.ft.	1548
Second Floor Sq.ft.	1114
Total Living Sq.ft.	2322
Garage	603
Total Sq.ft.	2925
Excluding Porch	160

ANDERSEN WINDOWS	
MODEL	R.O. SIZE
3030	36" x 36"
3040	36" x 48"
3049	36" x 51"
3056	36" x 66"
3060	36" x 12"
3049 MULL	13" x 51"
3056 MULL	13" x 66"
3060 MULL	13" x 12"

ANDERSEN SLIDING DOOR	
R.O.	SIZE
12 3/4"	82 1/8"

3/0 FRONT DOOR  
 R.O. 3'-2 1/2" x 82 1/2"

3/0 FRONT DOOR WITH (1) SIDE LIGHT  
 R.O. 4'-3 1/2" x 82"

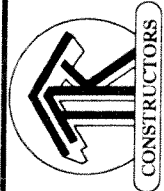
3/0 FRONT DOOR WITH (2) SIDE LIGHTS  
 R.O. 5'-5" x 82"

R.O. FOR BYFOLD DOORS USING DRY-WALL JAMB FACING IS 1 1/4" DOOR SIZE

R.O. FOR BYPASS DOORS USING DRY-WALL JAMB FACING MAKE SAME AS BOTH DOORS ADDED TOGETHER

ALL INTERIOR DOORS  
 SIZE + 2" TO WIDTH x 82 1/2" HIGH

R.O. POCKET DOOR - (2x DOOR WIDTH + 1") x 85" HIGH



*pw*