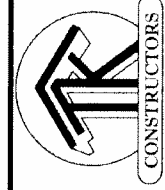




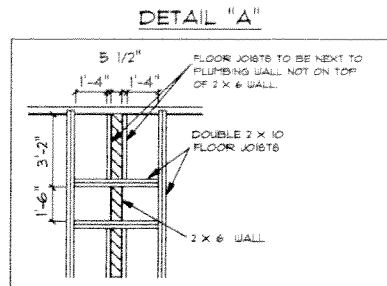
FRONT ELEVATION

NOTE: STOOPS, STEPS, APRON AND DRIVE BY OWNER

Property of TK Constructors, Inc.

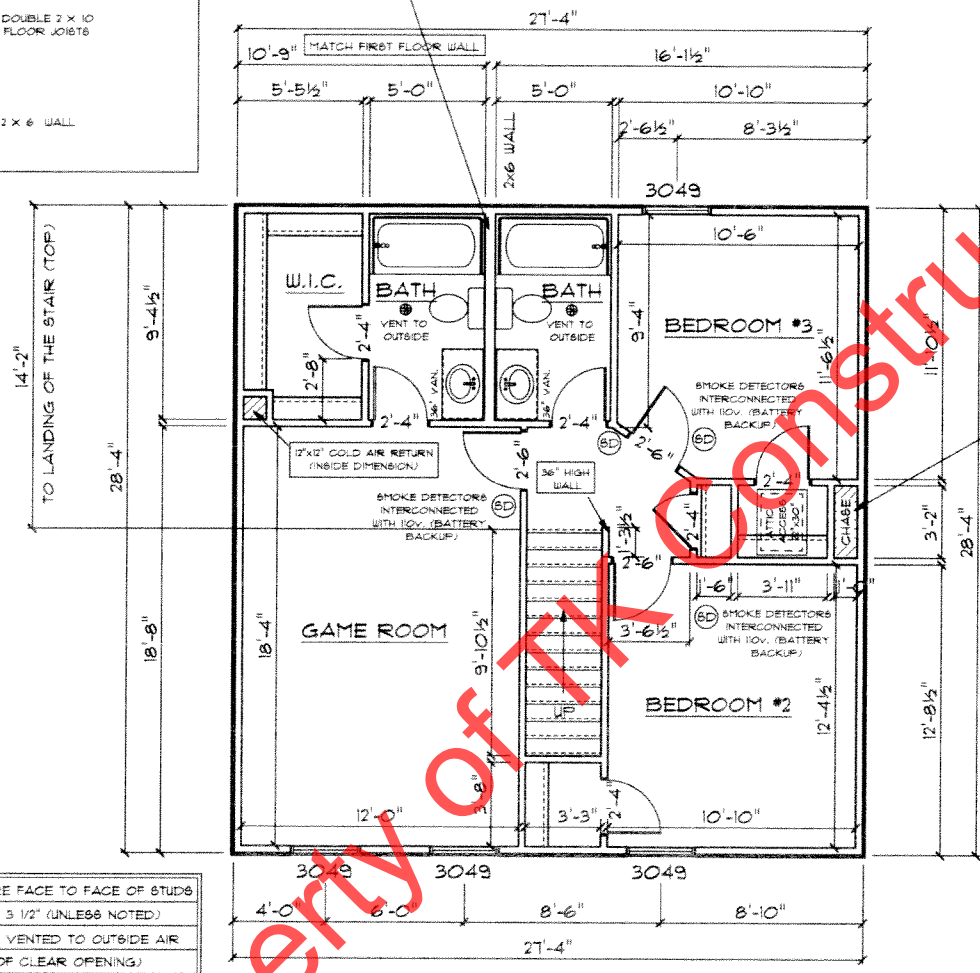


MD



SEE DETAIL "A" FOR FLOOR JOIST LAYOUT

ALL WALL DIMENSIONS ARE FACE TO FACE OF STUDS
 ALL INTERIOR WALLS ARE 3/2" (UNLESS NOTED)
 EXHAUST BATH FANS ARE VENTED TO OUTSIDE AIR
 3049 SASH (5.70 SQ.FT. OF CLEAR OPENING)
 ALL BRICK LAYOUT MEASUREMENTS ARE 4"



SECOND FLOOR PLAN

First Floor Sq.ft.	1,566
Second Floor Sq.ft.	714
Total Living Sq.ft.	2,340
Garage	471
Total Sq.ft.	2,811
Excluding Porch	160

ANDERSEN WINDOWS

MODEL	R.O. SIZE
3030	36" x 36"
3040	36" x 48"
3049	36" x 51"
3056	36" x 66"
3060	36" x 72"
3049 MULL	73" x 51"
3056 MULL	73" x 66"
3060 MULL	73" x 72"

ANDERSEN SLIDING DOOR
 R.O. 12 3/4" x 82 1/8"

3/0 FRONT DOOR
 R.O. 3-2 1/2" x 82 1/2"

3/0 FRONT DOOR WITH (1) SIDE LIGHT
 R.O. 4-3 1/2" x 82"

3/0 FRONT DOOR WITH (2) SIDE LIGHTS
 R.O. 5-5" x 82"

R.O. FOR BYFOLD DOORS USING DRY-WALL JAMB FACING IS 1 1/4" DOOR SIZE

R.O. FOR BYPASS DOORS USING DRY-WALL JAMB FACING MAKE SAME AS BOTH DOORS ADDED TOGETHER

ALL INTERIOR DOORS
 SIZE - 2" TO WIDTH x 82 1/2" HIGH

R.O. POCKET DOOR - (2x DOOR WIDTH + 1") x 85" HIGH

Property of TK Constructors, Inc.



MD