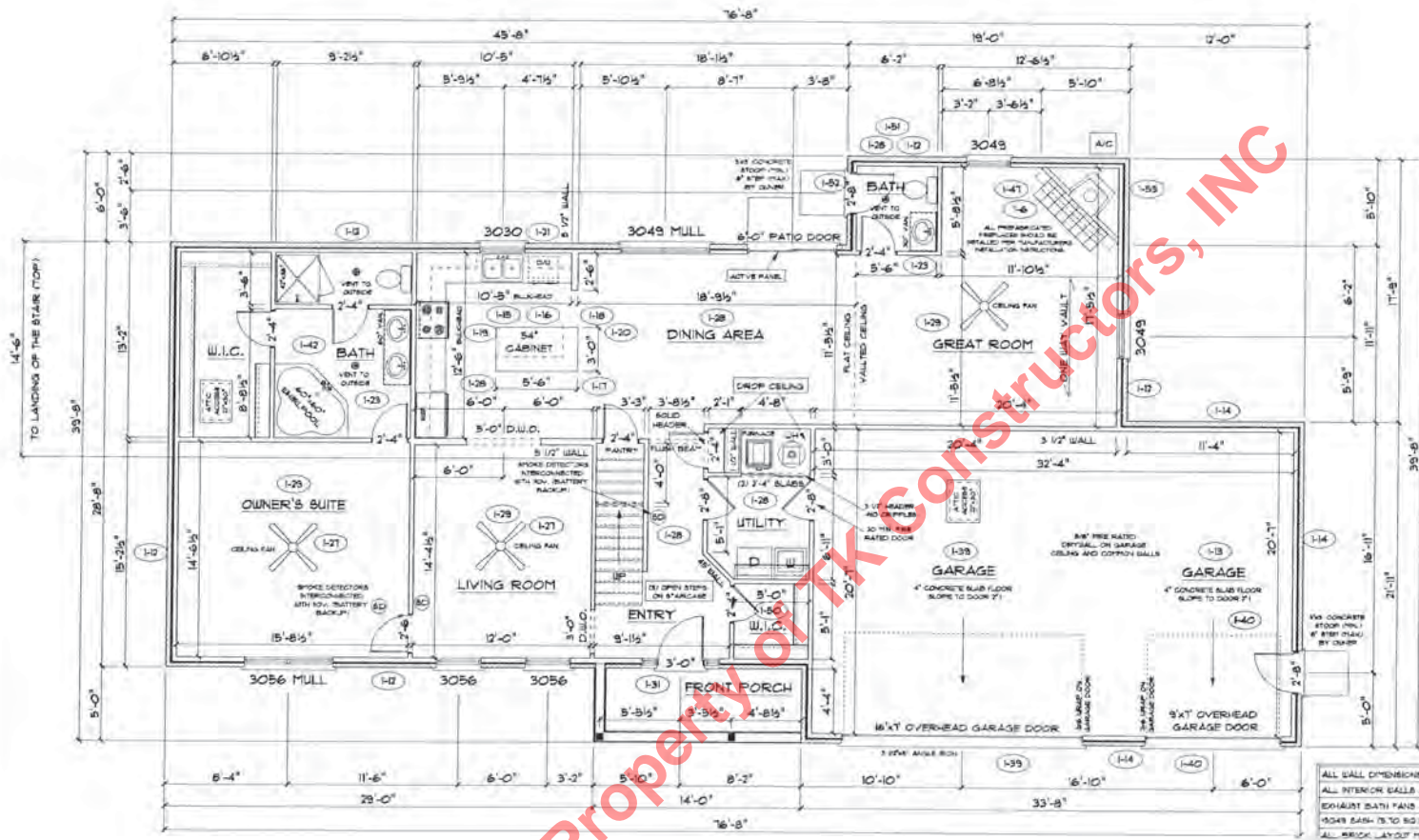


FRONT ELEVATION

NOTE: STOOPS, STEPS, APRON AND DRIVE BY OWNER





FIRST FLOOR PLAN

**ANDERSEN WINDOW SCHEDULE - 200 SERIES -**

ANDERSEN MODEL NO.	R.O. SIZE
3030	36" x 36"
3040	36" x 48"
3049*	36" x 51"
3056*	36" x 66"
3060*	36" x 72"
3049 MULL*	73" x 51"
3056 MULL*	73" x 66"
3060 MULL*	73" x 72"

**ANDERSEN SLIDING DOOR**  
 R.O. 72 3/4" x 82 7/8"

3'-0" FRONT DOOR  
 R.O. 38 3/8" x 82 1/2"

3'-0" FRONT DOOR WITH (1) SIDELITE  
 R.O. 51 7/8" x 82 1/2"

3'-0" FRONT DOOR WITH (2) SIDELITES  
 R.O. 65 3/8" x 82 1/2"

R.O. FOR BI-FOLD DOORS USING DRYWALL  
 JAMB FACING = 1/4" + DOOR SIZE

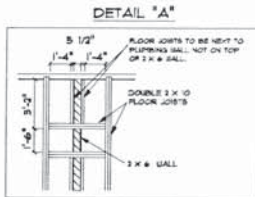
R.O. FOR BYPASS DOORS USING DRYWALL  
 JAMB FACING MAKE SAME AS BOTH DOORS  
 ADD TOGETHER

ALL INTERIOR DOORS  
 SIZE + 2" TO WIDTH x 82 1/2" HIGH

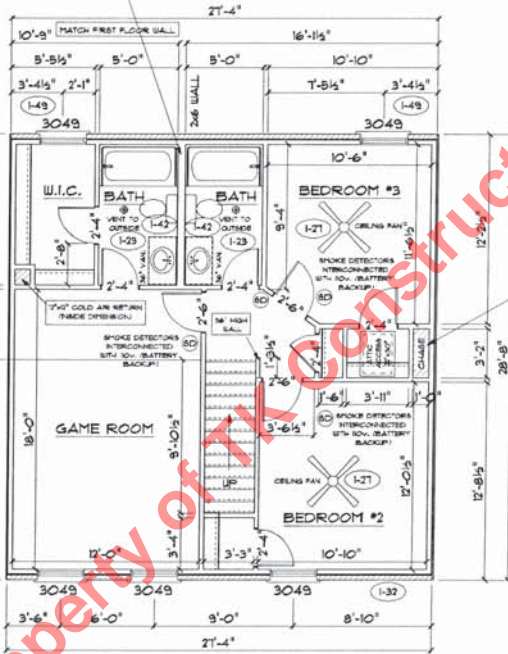
R.O. POCKET DOOR  
 (2x DOOR WIDTH + 1") x 85" HIGH

\* - DENOTES OPENING MEETS  
 SQUARE REQUIREMENTS

ALL WALL DIMENSIONS ARE FACE TO FACE OF BRICK  
 ALL INTERIOR WALLS ARE 3/4" UNLESS NOTED  
 EXHAUST BATH FANS ARE VENTED TO OUTSIDE AIR  
 2549 EACH 15" TO RIGHT OF CLEAR OPENING  
 ALL BRICK LAYOUT HEADINGS ARE 4"



ALL WALL DIMENSIONS ARE FACE TO FACE OF STUDS  
 ALL INTERIOR WALLS ARE 3 1/2" UNLESS NOTED.  
 EXHAUST BATH FANS ARE VENTED TO OUTSIDE AIR.  
 3049 SASH IS TO 50 FT. OF CLEAR OPENING.  
 ALL BRICK LAYOUT MEASUREMENTS ARE 4"



**SECOND FLOOR PLAN**

FIRST FLOOR SQ.FT.	1,625
SECOND FLOOR SQ.FT.	193
TOTAL LIVING SQ.FT.	2,408
GARAGE	121
TOTAL SQ.FT.	3,135
EXCLUDING PORCH	10

**ANDERSEN WINDOW SCHEDULE - 200 SERIES -**

ANDERSEN MODEL NO.	R.O. SIZE
3030	36" x 36"
3040	36" x 48"
3049*	36" x 51"
3056*	36" x 66"
3060*	36" x 12"
3049 MULL*	13" x 51"
3056 MULL*	13" x 66"
3060 MULL*	13" x 12"

ANDERSEN SLIDING DOOR	
R.O. 12	3/4" x 82 1/8"
3'-0" FRONT DOOR	
R.O. 30	3/8" x 82 1/2"
3'-0" FRONT DOOR WITH (1) SIDELITE	
R.O. 51	1/8" x 82 1/2"
3'-0" FRONT DOOR WITH (2) SIDELITES	
R.O. 65	3/8" x 82 1/2"

R.O. FOR BI-FOLD DOORS USING DRYWALL JAMB FACING + 1/4" + DOOR SIZE

R.O. FOR BYPASS DOORS USING DRYWALL JAMB FACING MAKE SAME AS BOTH DOORS ADDED TOGETHER

ALL INTERIOR DOORS  
 SIZE + 2" TO WIDTH x 82 1/2" HIGH

R.O. POCKET DOOR  
 12x DOOR WIDTH + 1" x 85" HIGH

\* DENOTES OPENING MEETS EGRESS REQUIREMENTS