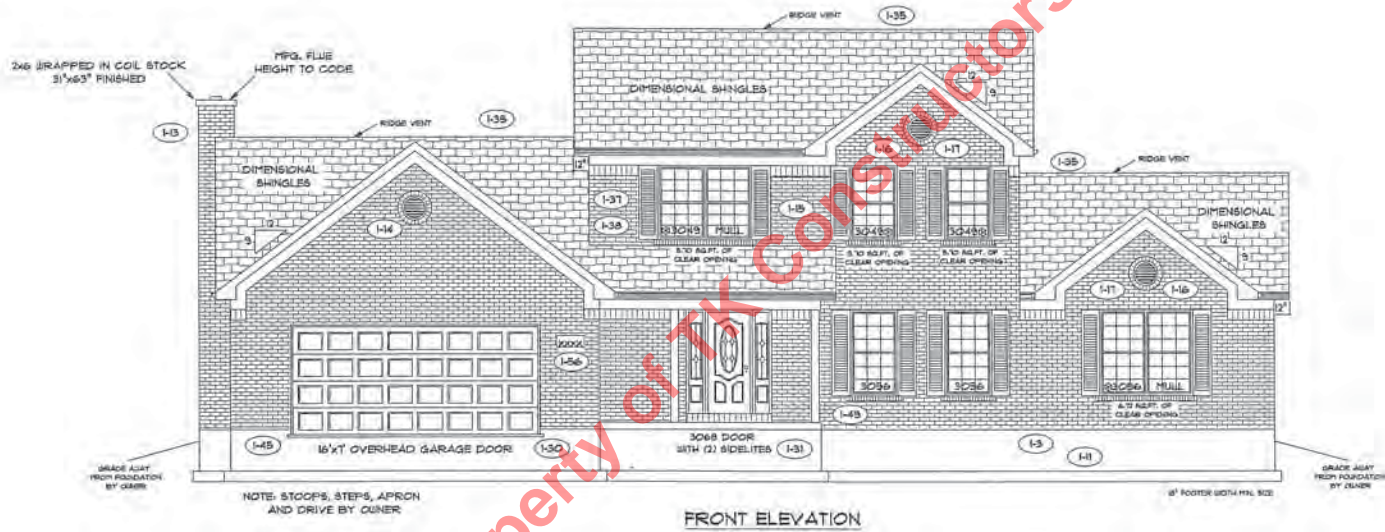


OPTIONS - SEE PAGE NO. 2

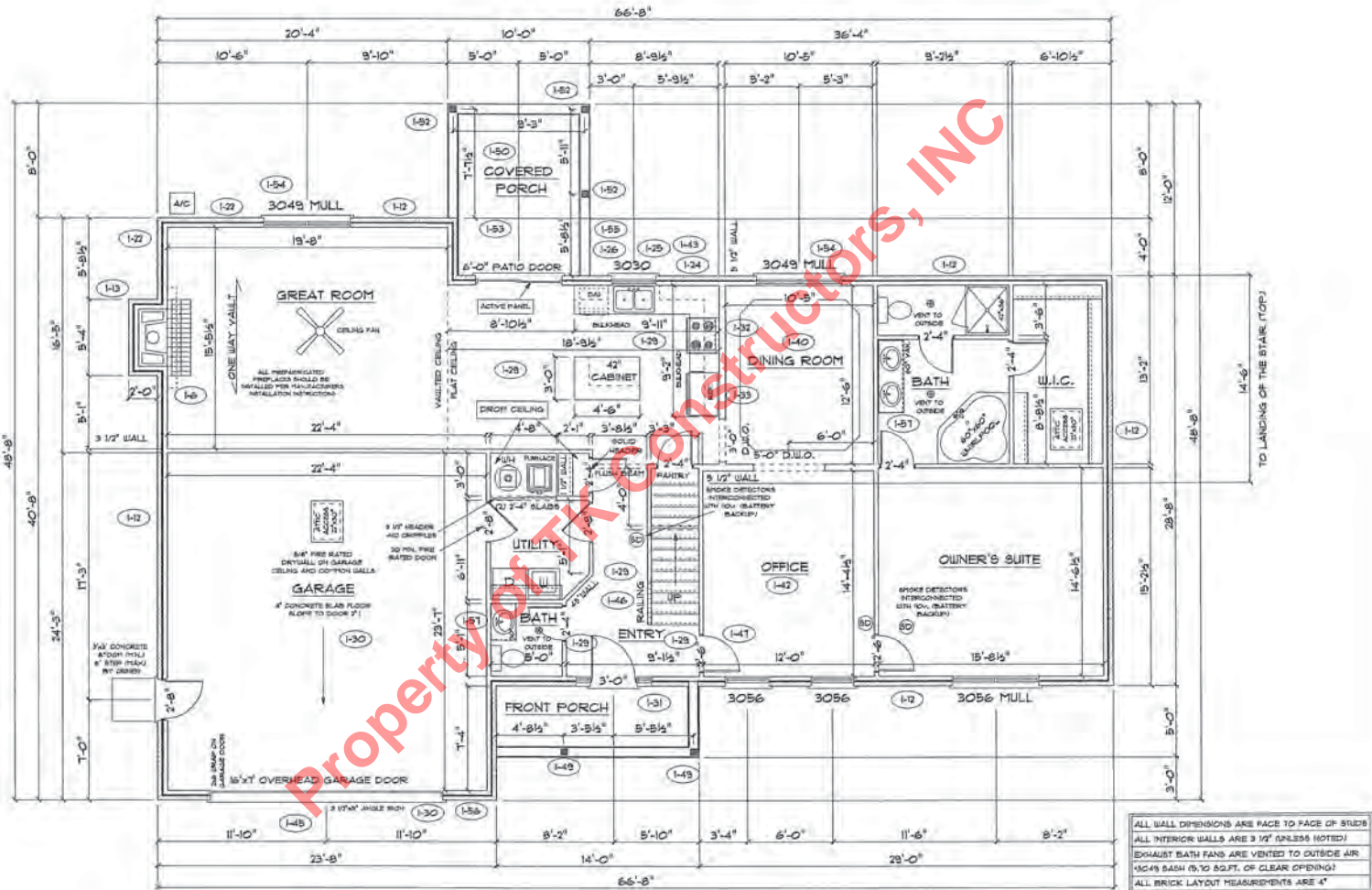


Property of TK Constructors, INC



FIRST FLOOR PLAN

ANDERSEN WINDOWS (1-44)	
MODEL	R.O. SIZE
3030	36" x 36"
3040	36" x 48"
3049	36" x 61"
3056	36" x 66"
3060	36" x 72"
3049 MULL	7" x 51"
3056 MULL	7" x 66"
3060 MULL	7" x 72"
ANDERSEN SLIDING DOOR	
R.O. TO 3/4" x 82 7/8"	
3/0 FRONT DOOR	
R.O. 3 1/2 1/2" x 62 1/2"	
3/0 FRONT DOOR WITH (1) SIDE LIGHT	
R.O. 4'-3 1/2" x 82"	
3/0 FRONT DOOR WITH (2) SIDE LIGHTS	
R.O. 5'-0" x 82"	
R.O. FOR BYFOLD DOORS USING DRY-WALL JAMB FACING IS 1 1/4" DOOR SIZE	
R.O. FOR BYPASS DOORS USING DRY-WALL JAMB FACING MAKE SAME AS BOTH DOORS ADDED TOGETHER	
ALL INTERIOR DOORS	
SIZE 1 7/8" TO WIDTH X 82 1/2" HIGH	
R.O. POCKET DOOR - 72" DOOR WIDTH + 1 7/8" x 85" HIGH	



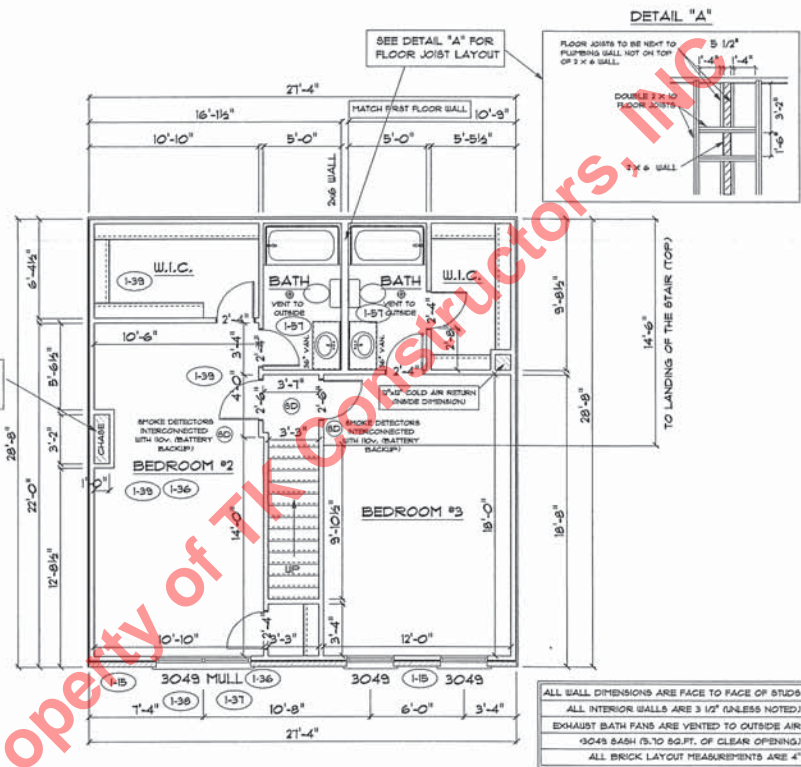
**SECOND FLOOR PLAN**

First Floor Sq.ft.	1621
Second Floor Sq.ft.	783
Total Living Sq.ft.	2,404
Garage	563
Total Sq.ft.	2,967
Excluding Front Porch	70
Excluding Rear Porch	117

**ANDERSEN WINDOWS (1-44)**

MODEL	R.O. SIZE
3030	36" x 36"
3040	36" x 48"
3043	36" x 57"
3056	36" x 66"
3060	36" x 72"
3049 MULL	73" x 57"
3056 MULL	73" x 66"
3060 MULL	73" x 72"
ANDERSEN SLIDING DOOR	
R.O.	12 3/4" x 82 1/8"
3/0 FRONT DOOR	
R.O.	3'-2 1/2" x 82 1/2"
3/0 FRONT DOOR WITH (U) SIDE LIGHT	
R.O.	4'-3 1/2" x 82"
3/0 FRONT DOOR WITH (U) SIDE LIGHTS	
R.O.	5'-5" x 82"
R.O. FOR BYFOLD DOORS USING DRY-WALL JAMB FACING IS 1 1/4" DOOR SIZE	
R.O. FOR BYPASS DOORS USING DRY-WALL JAMB FACING MAKE BAYE AS BOTH DOORS ADDED TOGETHER	
ALL INTERIOR DOORS	
SIZE	2" TO WIDTH x 82 1/2" HIGH
R.O. POCKET DOOR - (2x) DOOR WIDTH + (7") x 85" HIGH	

SPACE FOR GAS FURNACE FLUE OR DUCT WORK



ALL WALL DIMENSIONS ARE FACE TO FACE OF STUDS  
 ALL INTERIOR WALLS ARE 3 1/2" (UNLESS NOTED)  
 EXHAUST BATH FANS ARE VENTED TO OUTSIDE AIR  
 (3049 BASH (9. TO 82.FT. OF CLEAR OPENING.)  
 ALL BRICK LAYOUT MEASUREMENTS ARE 4"