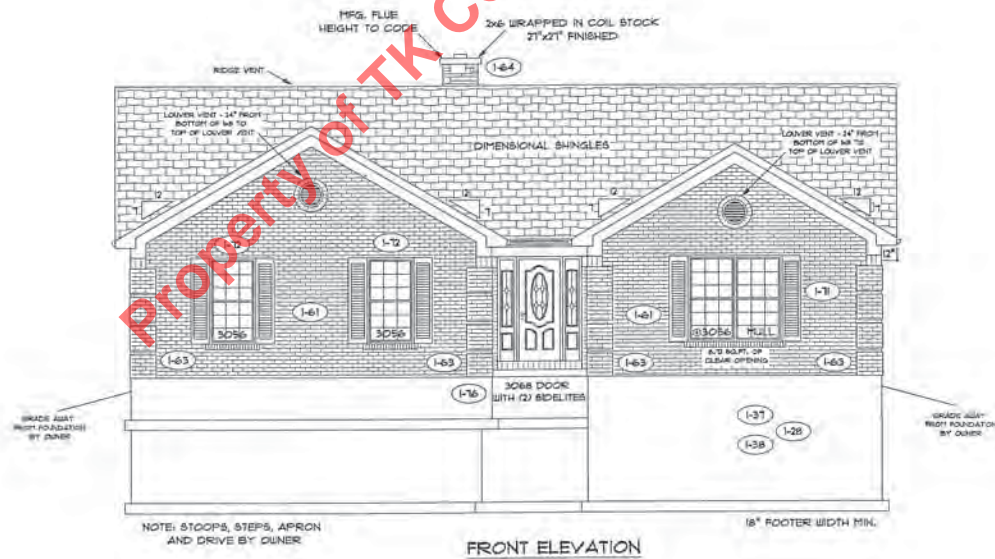
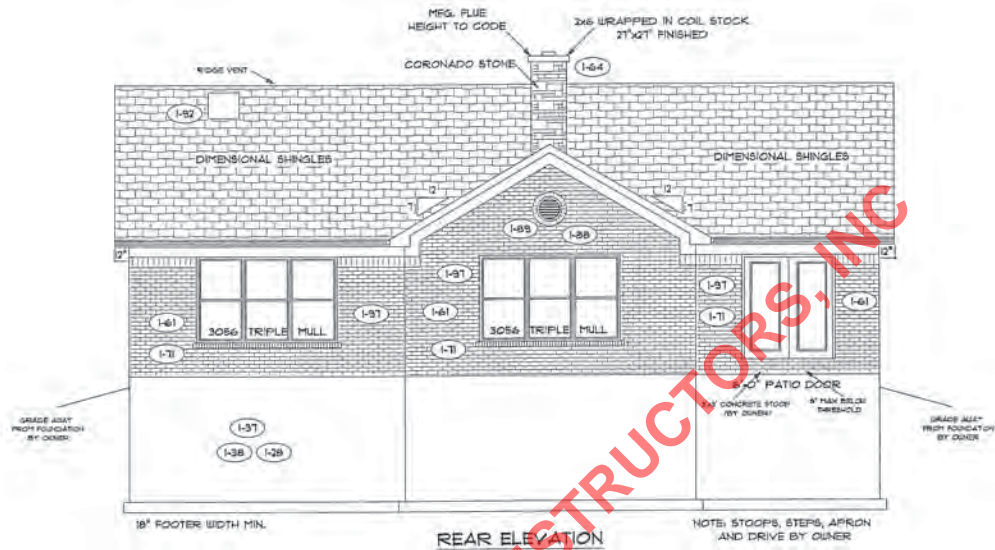


OPTIONS: SEE PAGE NO. 2



PAGE NO.: 1B

MODEL: HARTFORD

VER: 070710

DRAWING BY: SES

SCALE: 1/8" IN. = 1 FT.

DATE: April 27, 2011

HOMEOWNER: TERRY AND INS



TK CONSTRUCTORS

8'-0" FLAT CEILING HEIGHT

FLOOR PLAN

Total Living Sq.ft.	2,152
Garage	514
Total Sq.ft.	2,666
Excluding Front Porch	24

ANDERSEN WINDOWS

MODEL	R.O. SIZE
5030	36" x 36"
3040	36" x 48"
3048	36" x 51"
3058	36" x 66"
3060	36" x 72"
3048 MULL	73" x 51"
3056 MULL	73" x 66"
3060 MULL	73" x 72"

ANDERSEN SLIDING DOOR
R.O. 12 3/4" x 82 1/8"

3/0 FRONT DOOR
R.O. 3'2 1/2" x 82 1/2"

3/0 FRONT DOOR WITH (1) SIDE LIGHT
R.O. 4'3 1/2" x 82"

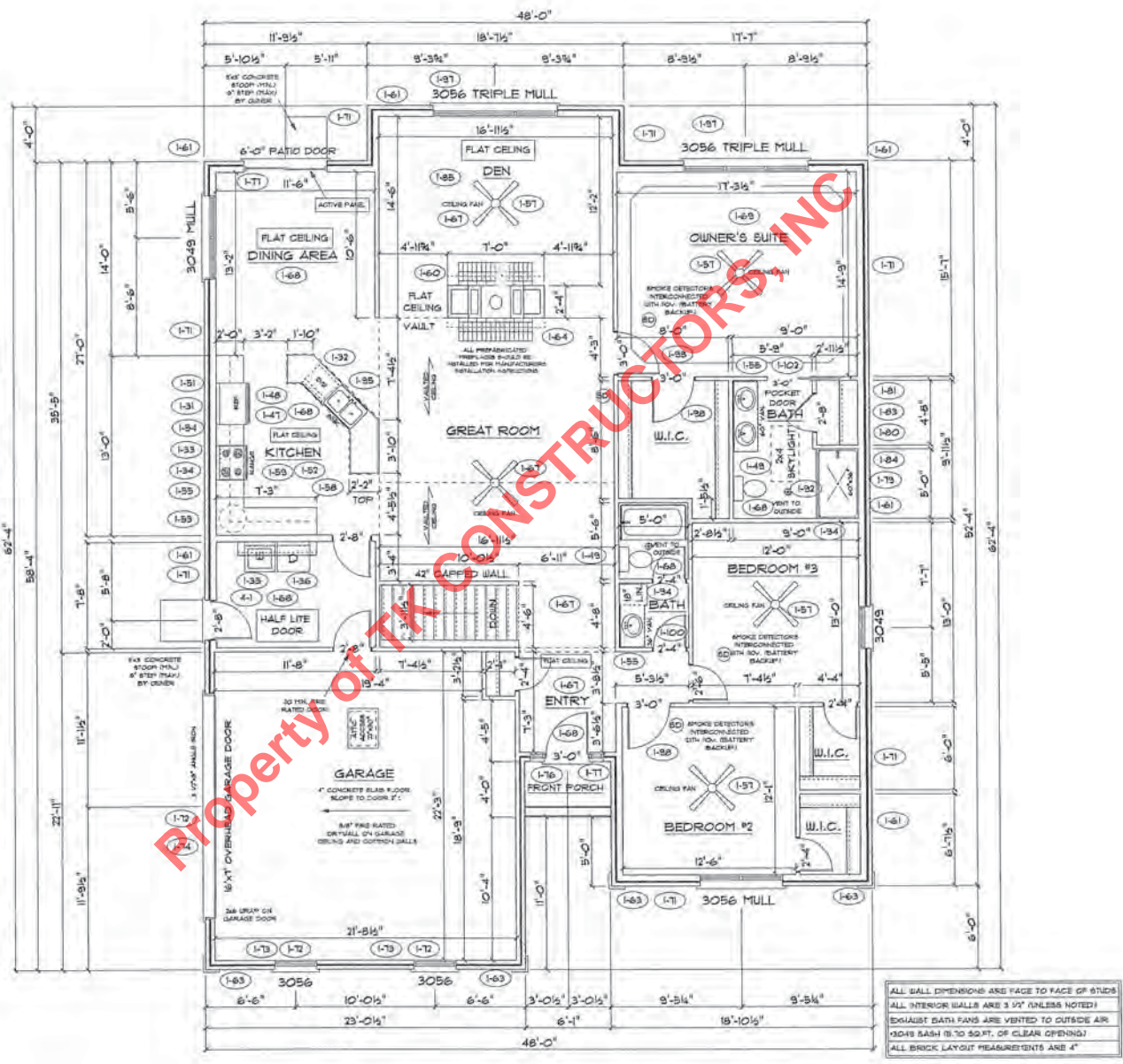
3/0 FRONT DOOR WITH (2) SIDE LIGHTS
R.O. 5'5" x 82"

R.O. FOR BYFOLD DOORS USING DRY-WALL JAMB FACING IS 1 1/4" DOOR SIZE

R.O. FOR BYPASS DOORS USING DRY-WALL JAMB FACING MAKE SAME AS BOTH DOORS ADDED TOGETHER

ALL INTERIOR DOORS
SIZE 4'2" TO WIDTH x 82 1/2" HIGH

R.O. POCKET DOOR - (2) DOOR
WIDTH = (1) x 85" HIGH



ALL WALL DIMENSIONS ARE FACE TO FACE OF STUDS
ALL INTERIOR WALLS ARE 3/4" (UNLESS NOTED)
EXHAUST BATH FANS ARE VENTED TO OUTSIDE AIR
13048 SASH IS 30" SQ. FT. OF CLEAR OPENING
ALL BRICK LAYOUT MEASUREMENTS ARE 4"

