

OPTIONS: SEE PAGE NO. 2

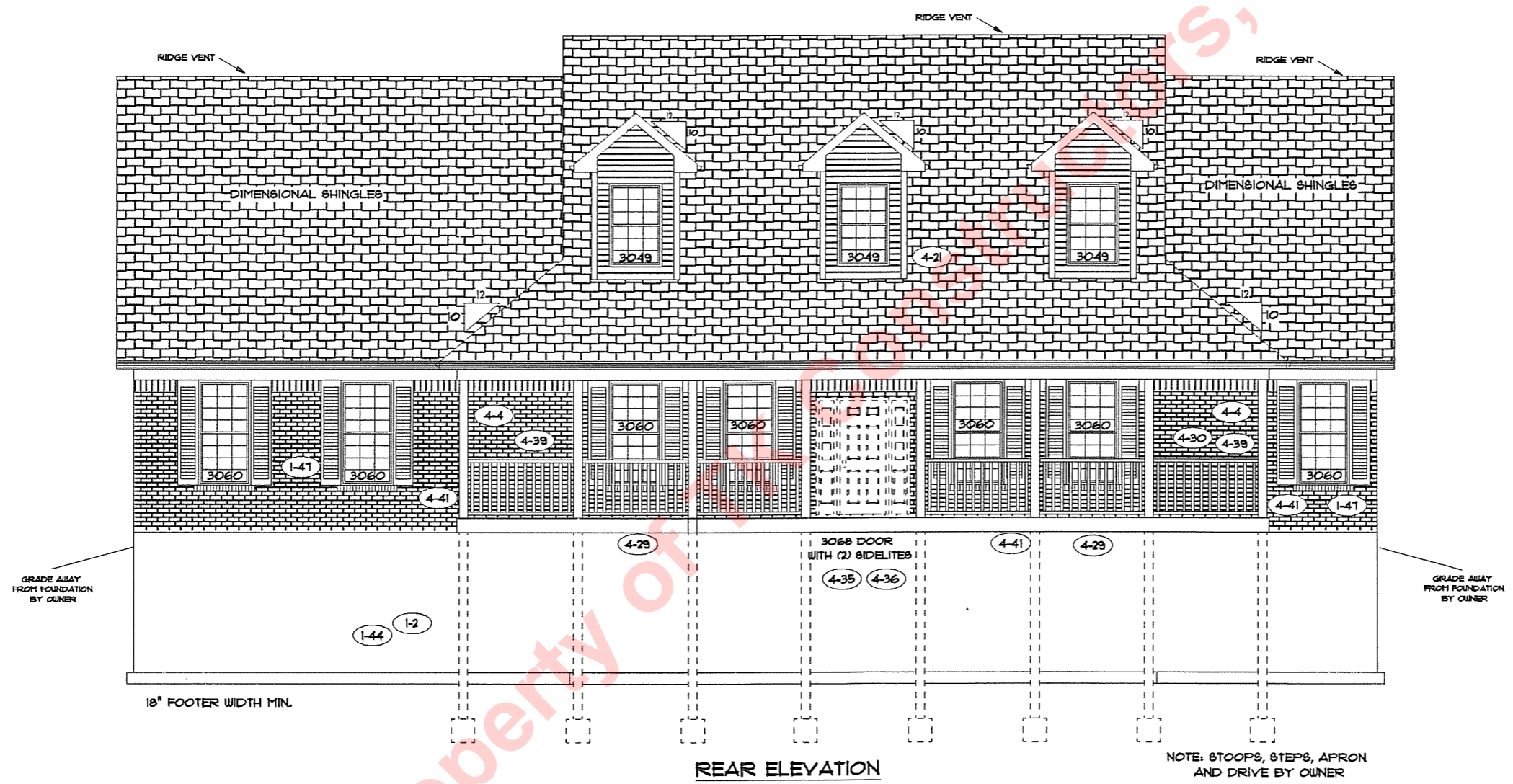
PAGE NO:
1B

MODEL:
VER: 021210
DRAWING BY: SES
SCALE: 1/8 IN. = 1 FT.



DATE: August 16, 2010
JOB NO: 112-10-0004

TK CONSTRUCTORS



Property of TK CONSTRUCTORS, INC

FLOOR PLAN

Total Living Sq.ft.	2,495
Garage	480
Total Sq.ft.	2,975
Excluding Front Porch	338
Excluding Porch	444

ANDERSEN WINDOWS (1-12)	
MODEL	R.O. SIZE
3030	36" x 36"
3040	36" x 48"
3049	36" x 57"
3056	36" x 66"
3060	36" x 72"
3049 MULL	73" x 57"
3056 MULL	73" x 66"
3060 MULL	73" x 72"
ANDERSEN SLIDING DOOR R.O. 12 3/4" x 82 1/8"	
3/0 FRONT DOOR R.O. 3'-2 1/2" x 82 1/2"	
3/0 FRONT DOOR WITH (1) SIDE LIGHT R.O. 4'-3 1/2" x 82"	
3/0 FRONT DOOR WITH (2) SIDE LIGHTS R.O. 5'-5" x 82"	
R.O. FOR BYFOLD DOORS USING DRY-WALL JAMB FACING 18 1/4" DOOR SIZE	
R.O. FOR BYPASS DOORS USING DRY-WALL JAMB FACING MAKE SAME AS BOTH DOORS ADDED TOGETHER	
ALL INTERIOR DOORS SIZE + 2" TO WIDTH x 82 1/2" HIGH	
R.O. POCKET DOOR - (2x DOOR WIDTH + 1") x 85" HIGH	

9'-0" FIRST FLOOR CEILING HEIGHT (1-30)
INCLUDES 4 1/4" BASE, 3060 WINDOWS ON FRONT, 3056 WINDOWS ON THE REAR OF THE HOME, AND 42" WALL CABINETS

