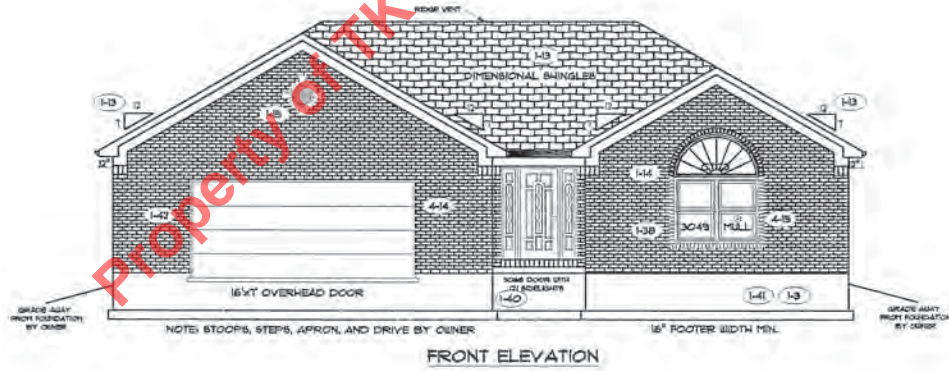


REAR ELEVATION



FRONT ELEVATION



FLOOR PLAN

Total Living Sq.Ft.	2,120
Garage	856
Total Sq.Ft.	2,976
Excluding Porch	25

ANDERSEN WINDOWS

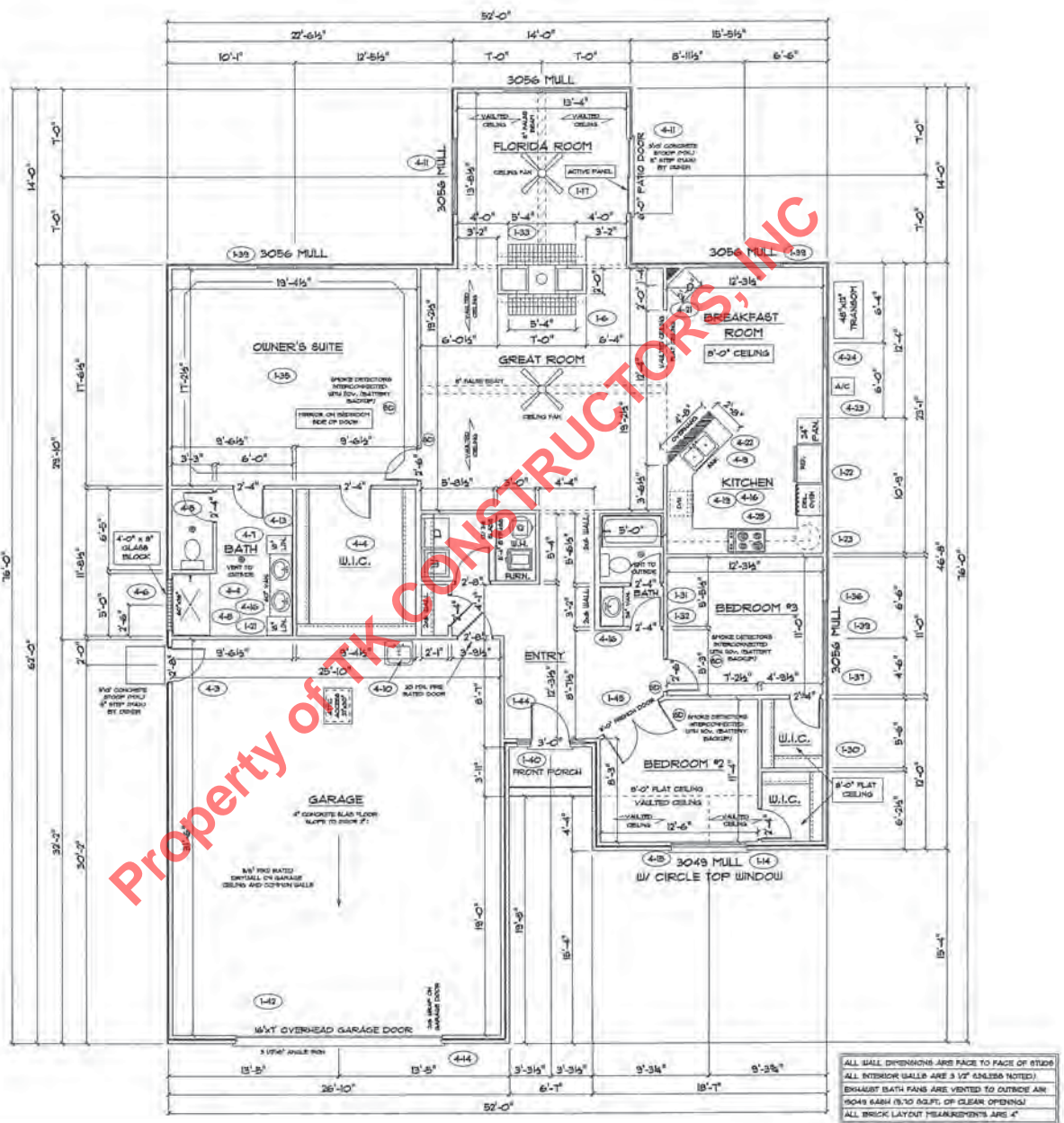
MODEL	R.O. SIZE
3030	36" x 36"
3040	36" x 48"
3048	36" x 57"
3056	36" x 66"
3060	36" x 72"
3048 MULL	13" x 57"
3056 MULL	13" x 66"
3060 MULL	13" x 72"

- ANDERSEN SLIDING DOOR
R.O. 3 3/4" x 82 1/8"
- 3/0 FRONT DOOR
R.O. 3'-2 1/2" x 82 1/2"
- 3/0 FRONT DOOR WITH (1) SIDE LIGHT
R.O. 4'-3 1/2" x 82"
- 3/0 FRONT DOOR WITH (2) SIDE LIGHTS
R.O. 5'-5" x 82"

R.O. FOR BYFOLD DOORS USING DRY-WALL JAMBS FACING IS 1 1/4" DOOR SIZE

R.O. FOR BYPASS DOORS USING DRY-WALL JAMB FACING MAKE SAME AS BOTH DOORS ADDED TOGETHER

- ALL INTERIOR DOORS
SIZE = 2' TO WIDTH x 82 1/2" HIGH
R.O. POCKET DOOR = 0x DOOR WIDTH + 1" x 85" HIGH



ALL WALL DIMENSIONS ARE FACE TO FACE OF STUDS
ALL INTERIOR WALLS ARE 3 1/2" UNLESS NOTED!
EXHAUST BATH FANS ARE VENTED TO OUTSIDE AIR
DOORS BASH (6" TO 8 1/2") OF CLEAR OPENING!
ALL BRICK LAYOUT MEASUREMENTS ARE 4"

