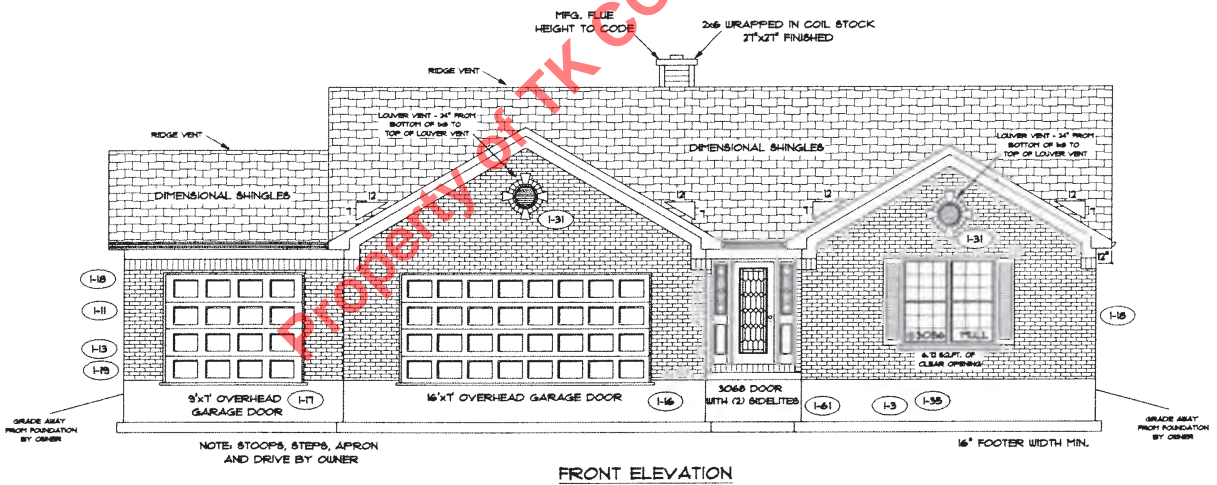


OPTIONS: SEE PAGE NO. 2



PAGE NO.: 10

MODEL: HARTFORD

VER: 070710

DRAWING BY: SES

SCALE: 1/8" IN. = 1 FT.

DATE: June 01, 2011

JOB NO.: 110-11-0070

CONSTRUCTORS

TK CONSTRUCTORS

8'-0" FLAT CEILING HEIGHT

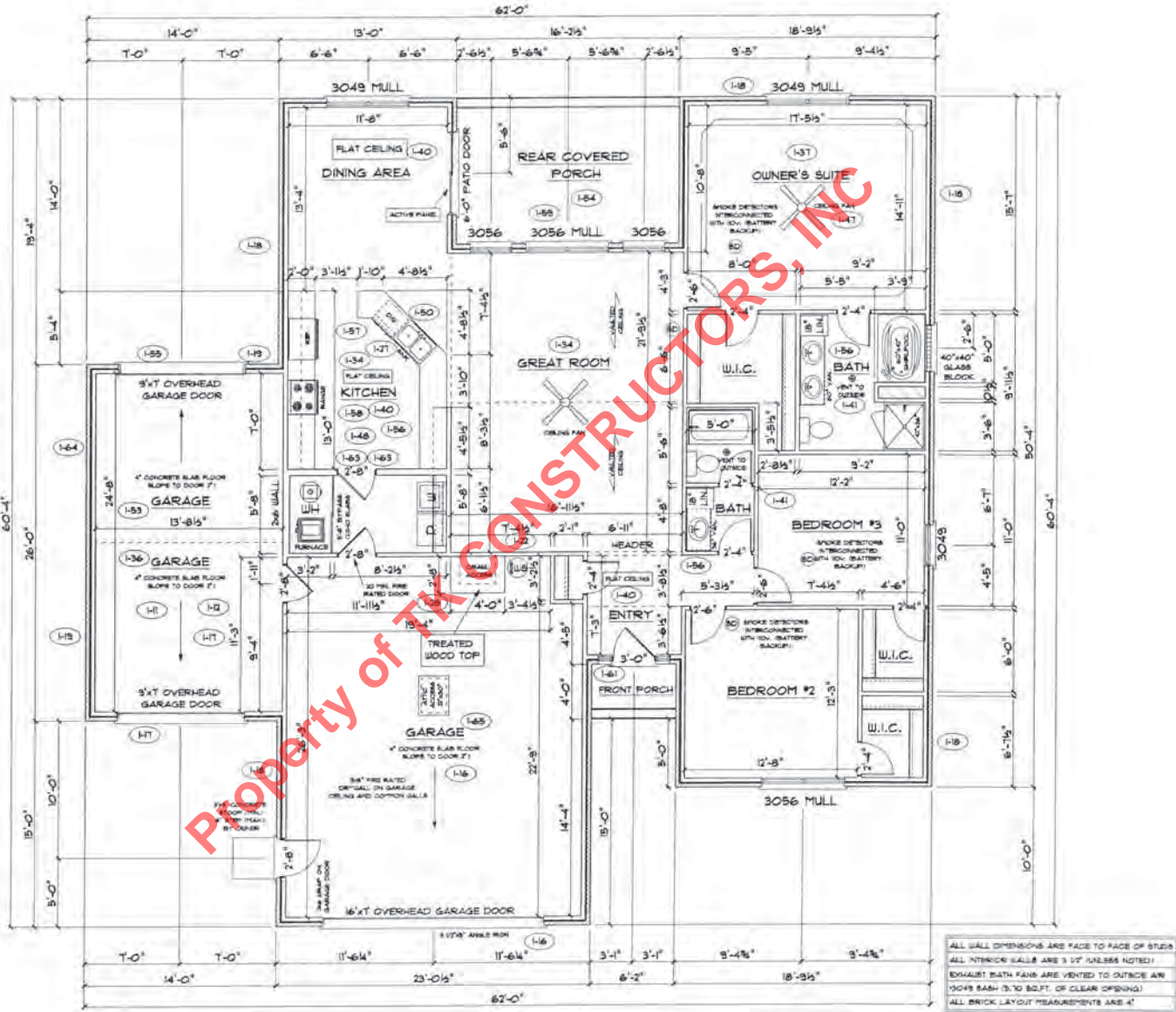
FLOOR PLAN

Total Living Sq.ft.	1,811
Garage	970
Total Sq.ft.	2,781
Excluding Front Porch	24
Excluding Rear Porch	173

ANDERSEN WINDOWS (I-60)

MODEL	R.O. SIZE
3030	36" x 36"
3040	36" x 48"
3049	36" x 57"
3056	36" x 66"
3060	36" x 72"
3049 MULL	73" x 57"
3056 MULL	73" x 66"
3060 MULL	73" x 72"

- ANDERSEN SLIDING DOOR
R.O. 72 3/4" x 82 1/8"
- 3/0 FRONT DOOR
R.O. 3'-2 1/2" x 82 1/2"
- 3/0 FRONT DOOR WITH (1) SIDE LIGHT
R.O. 4'-3 1/2" x 82"
- 3/0 FRONT DOOR WITH (2) SIDE LIGHTS
R.O. 5'-5" x 82"
- R.O. FOR BYFOLD DOORS USING DRY-WALL JAMB FACING IS 1 1/4" DOOR SIZE
- R.O. FOR BYPASS DOORS USING DRY-WALL JAMB FACING MAKE SAME AS BOTH DOORS ADDED TOGETHER
- ALL INTERIOR DOORS
SIZE = 2" TO WIDTH x 82 1/2" HIGH
- R.O. POCKET DOOR - (24" DOOR WIDTH + 1") x 85" HIGH



ALL WALL DIMENSIONS ARE FACE TO FACE OF STUD
ALL INTERIOR WALLS ARE 5/8" UNLESS NOTED!
EXHAUST BATH FANS ARE VENTED TO OUTSIDE AIR
(3049 BATH IS TO BOLT. OF CLEAR OPENING)
ALL BRICK LAYOUT MEASUREMENTS ARE 4"