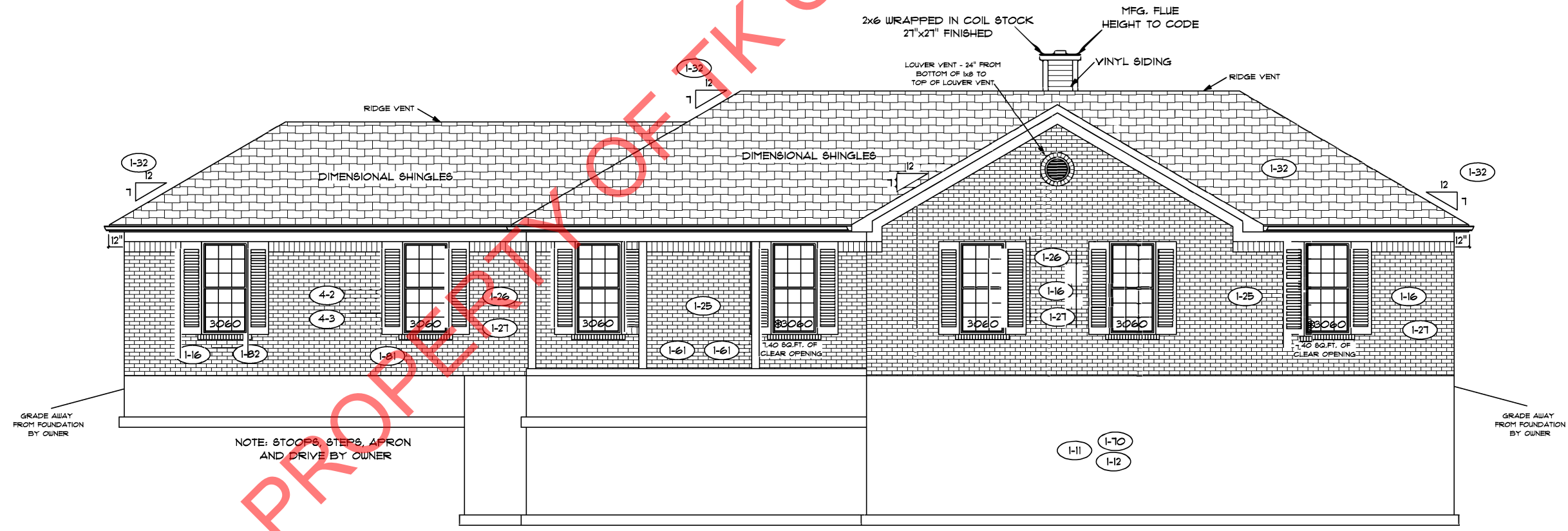
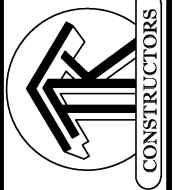


REAR ELEVATION



FRONT ELEVATION



FLOOR PLAN (5-10)

TOTAL LIVING SQ.FT.	1,926
GARAGE	542
TOTAL SQ.FT.	2,468
EXCLUDING PORCH	132

ANDERSEN WINDOW SCHEDULE  
- 200 SERIES - (1-35)

ANDERSEN MODEL NO.	R.O. SIZE
3030	36" x 36"
3040	36" x 48"
3049*	36" x 57"
3056*	36" x 66"
3060*	36" x 72"
3049 MULL*	73" x 57"
3056 MULL*	73" x 66"
3060 MULL*	73" x 72"

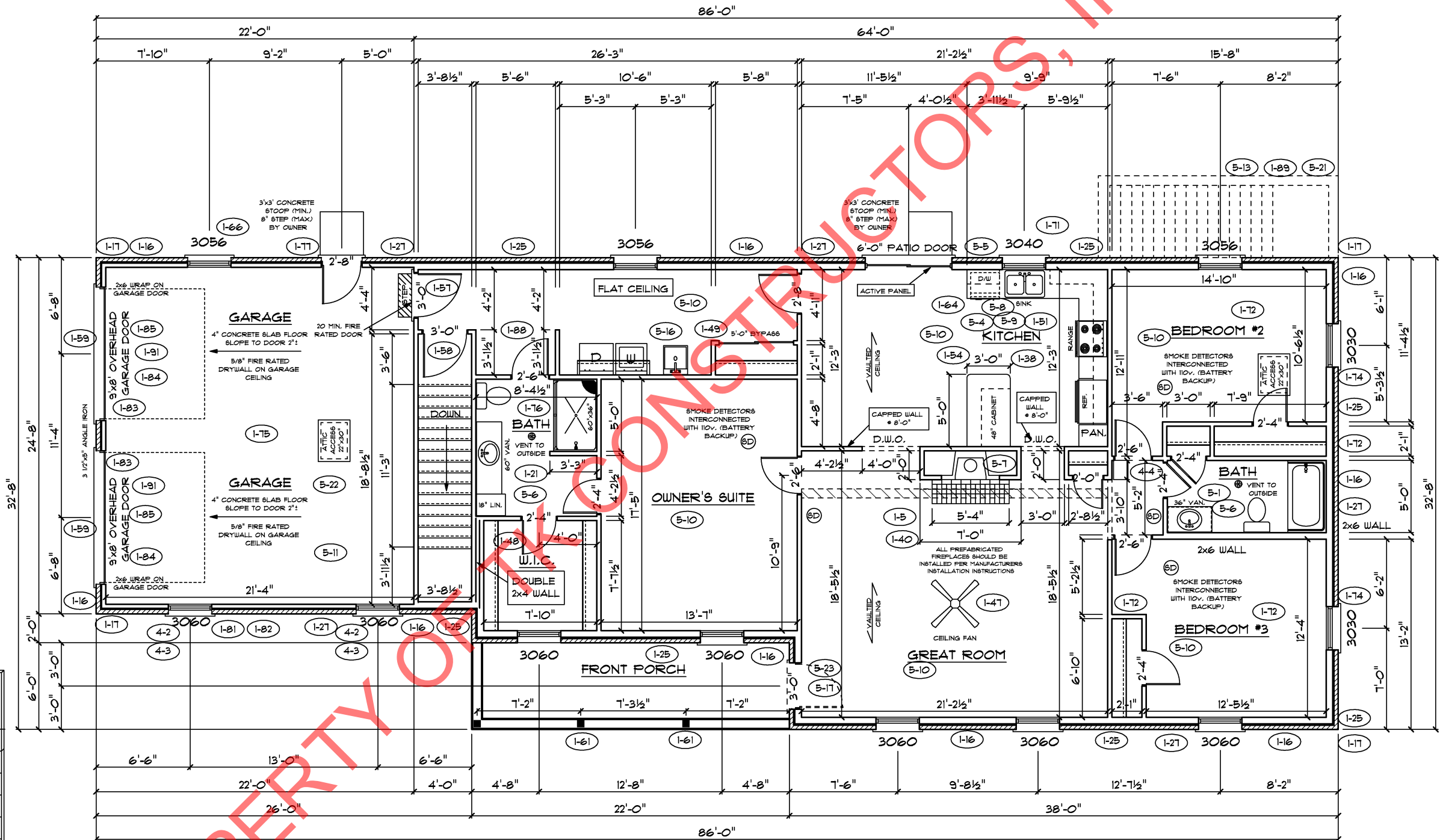
ANDERSEN SLIDING DOOR R.O. 72 3/4" x 82 1/8"
3'-0" FRONT DOOR R.O. 38 3/8" x 82 1/2"
3'-0" FRONT DOOR WITH (1) SIDELITE R.O. 51 7/8" x 82 1/2"
3'-0" FRONT DOOR WITH (2) SIDELITES R.O. 65 3/8" x 82 1/2"
R.O. FOR BI-FOLD DOORS USING DRYWALL JAMB FACING = 1 1/4" + DOOR SIZE x (81 1/2")
R.O. FOR BYPASS DOORS USING DRYWALL JAMB FACING MAKE SAME AS BOTH DOORS ADDED TOGETHER
ALL INTERIOR DOORS SIZE + 2" TO WIDTH x 82 1/2" HIGH
R.O. POCKET DOOR (2x DOOR WIDTH + 1") x 85" HIGH

\* - DENOTES OPENING MEETS  
EGRESS REQUIREMENTS

9'-0" FIRST FLOOR  
CEILING HEIGHT (1-26)

INCLUDES:
1. 4 1/4" BASEBOARDS IN LIEU OF 3 1/4"
2. 3060 WINDOWS IN LIEU OF 3056 WINDOWS
3. 3056 WINDOWS IN LIEU OF 3049 WINDOWS
4. DRYWALL WRAPPED OPENINGS 12" TALLER
5. 42" KITCHEN CABINETS (1-56)
6. 16'x7' GARAGE DOOR STANDARD

ALL WALL DIMENSIONS ARE FACE TO FACE OF STUDS  
ALL INTERIOR WALLS ARE 3/2" (UNLESS NOTED)  
EXHAUST BATH FANS ARE VENTED TO OUTSIDE AIR  
\*3049 SASH (5.70 SQ.FT. OF CLEAR OPENING)  
ALL BRICK LAYOUT MEASUREMENTS ARE 4"



CONSTRUCTORS