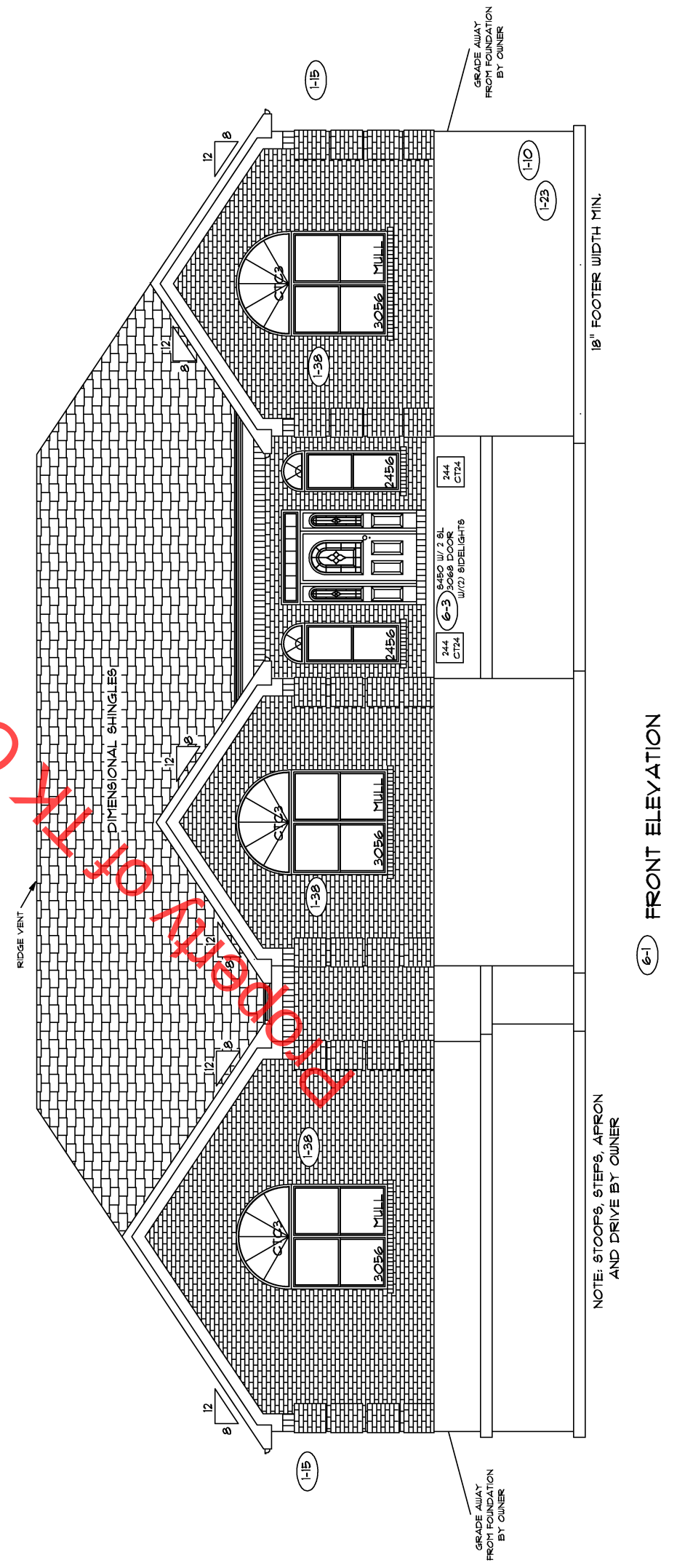
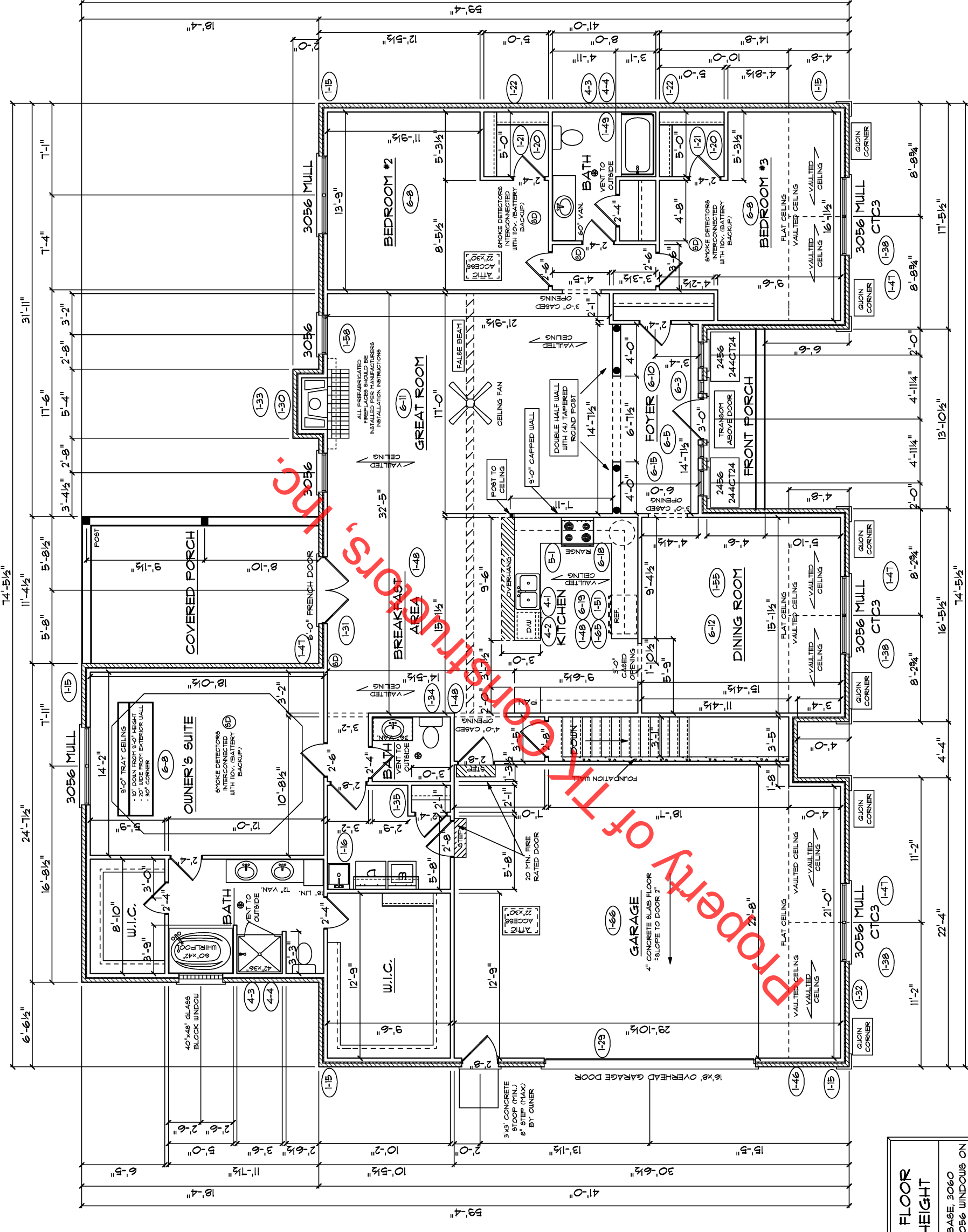


6-1 REAR ELEVATION



6-1 FRONT ELEVATION



FLOOR PLAN (1-47) (6-9)

Total Living Sq.ft.	2620
Garage	108
Total Sq.ft.	3328
Excluding Front Porch	62
Excluding Rear Porch	208

ANDERSEN WINDOW SCHEDULE - 200 SERIES -	
ANDERSEN MODEL NO.	R.O. SIZE
3030	36" x 36"
3040	36" x 48"
3049*	36" x 51"
3056*	36" x 66"
3060*	36" x 72"
3049 MULL*	13" x 51"
3056 MULL*	13" x 66"
3060 MULL*	13" x 72"
ANDERSEN SLIDING DOOR R.O. 12 3/4" x 82 1/8"	
3'-0" FRONT DOOR R.O. 38 3/8" x 82 1/2"	
3'-0" FRONT DOOR WITH (1) SIDELITE R.O. 51 7/8" x 82 1/2"	
3'-0" FRONT DOOR WITH (2) SIDELITES R.O. 65 3/8" x 82 1/2"	
R.O. FOR BI-FOLD DOORS USING DRYWALL JAMB FACING = 1 1/4" * DOOR SIZE x (81 1/2")	
R.O. FOR BYPASS DOORS USING DRYWALL JAMB FACING MAKE SAME AS BOTH DOORS ADDED TOGETHER	
ALL INTERIOR DOORS SIZE * 2" TO WIDTH x 82 1/2" HIGH	
R.O. FOCKET DOOR (2x DOOR WIDTH * 1' x 85" HIGH	

\* - DENOTES OPENING MEETS EGRESS REQUIREMENTS

ALL WALL DIMENSIONS ARE FACE TO FACE OF STUDS  
 ALL INTERIOR WALLS ARE 3 1/2" (UNLESS NOTED)  
 EXHAUST BATH FANS ARE VENTED TO OUTSIDE AIR  
 \*3049 SASH (5. TO SQ.FT. OF CLEAR OPENING)  
 ALL BRICK LAYOUT MEASUREMENTS ARE 4"

9'-0" FIRST FLOOR  
 CEILING HEIGHT  
 INCLUDES 4 1/4" BASE, 3060  
 WINDOWS ON FRONT, 3056 WINDOWS ON  
 THE REAR OF THE HOME, AND  
 42" WALL CABINETS