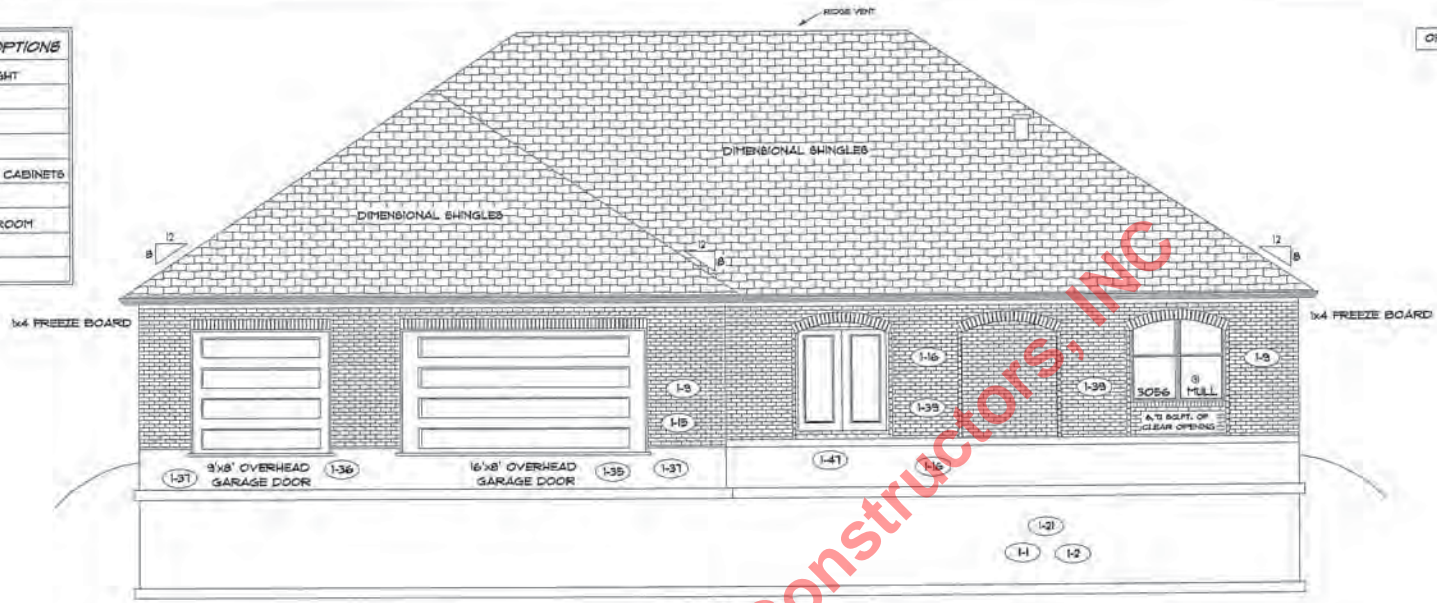


HAMPTON STANDARD OPTIONS

- 9'-0" FIRST FLOOR CEILING HEIGHT
- DIRECT VENT FIREPLACE
- QUOIN CORNERS
- 8/12 PITCH HIP ROOF
- SCHROCK RAISED PANEL OAK CABINETS
- 42" WALL CABINETS
- TRAY CEILING IN MASTER BEDROOM
- COVERED REAR PORCH
- 3RD CAR GARAGE

OPTIONS - SEE PAGE NO. 2



REAR ELEVATION



FRONT ELEVATION

PAGE NO. **1B**

MODEL: HAMPTON
 VER: S2508
 DRAWING BY: SES
 SCALE: 1/8" = 1'-0"



DATE: August 17, 2009

JOB NO: 112-09-0004

TK CONSTRUCTORS

FLOOR PLAN

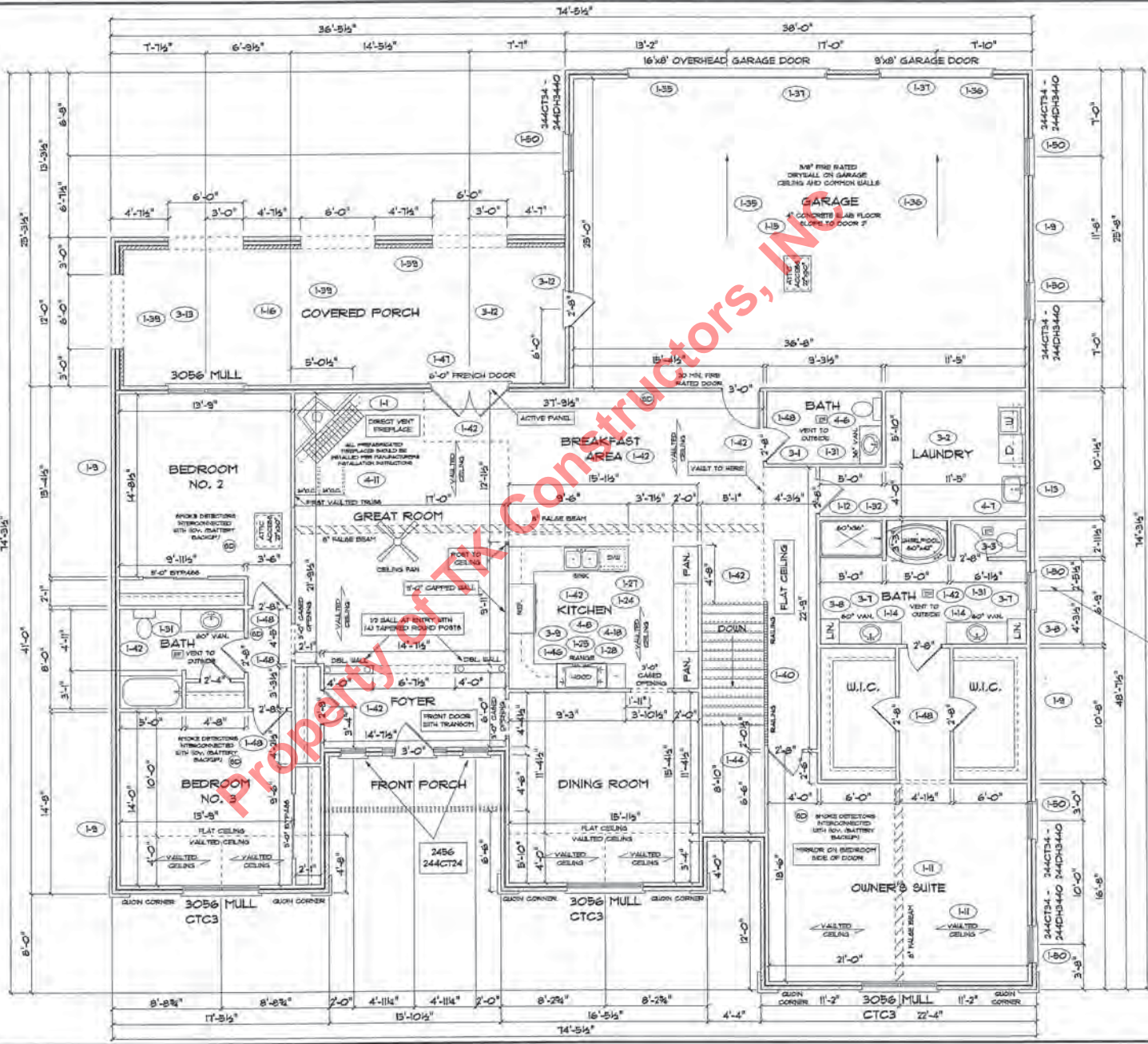
Total Living Sq.ft.	3,049
Garage	972
Total Sq.ft.	4,021
Excluding Front Porch	62
Excluding Rear Porch	437

ANDERSEN WINDOWS

MODEL	R.O. SIZE
3030	36" x 36"
3040	36" x 48"
3048	36" x 57"
3056	36" x 66"
3060	36" x 72"
3440	40" x 48"
3048 MULL	73" x 57"
3056 MULL	73" x 66"
3060 MULL	73" x 72"
244CT34 CIRCLE TOP WINDOW	R.O. 40" x 23 1/8"
ANDERSEN SLIDING DOOR	R.O. 72 3/4" x 82 1/8"
3/0 FRONT DOOR	R.O. 5'-2 1/2" x 82 1/2"
3/0 FRONT DOOR WITH (1) SIDE LIGHT	R.O. 4'-3 1/2" x 82"
3/0 FRONT DOOR WITH (2) SIDE LIGHTS	R.O. 5'-5" x 82"
R.O. FOR BYFOLD DOORS USING DRY-WALL JAMB FACING IS 1/4" DOOR SIZE	
R.O. FOR BYPASS DOORS USING DRY-WALL JAMB FACING MAKE BAMB AS BOTH DOORS ADDED TOGETHER	
ALL INTERIOR DOORS SIZE + 2" TO WIDTH x 82 1/2" HIGH	
R.O. POCKET DOOR - 12x DOOR WIDTH + 1" x 85" HIGH	

9'-0" FIRST FLOOR CEILING HEIGHT

INCLUDED 4 1/4" BASE 3060 WINDOWS ON FRONT, 3056 WINDOWS ON THE REAR OF THE HOME, AND 42" WALL CABINETS



PAGE NO: **3B**
 MODEL: HAMPTON
 VER: 0208
 DRAWING BY: SES
 SCALE: 1/8" = 1'-0"
 DATE: August 13, 2009
 JOB NO: 112-09-0004

TK CONSTRUCTORS