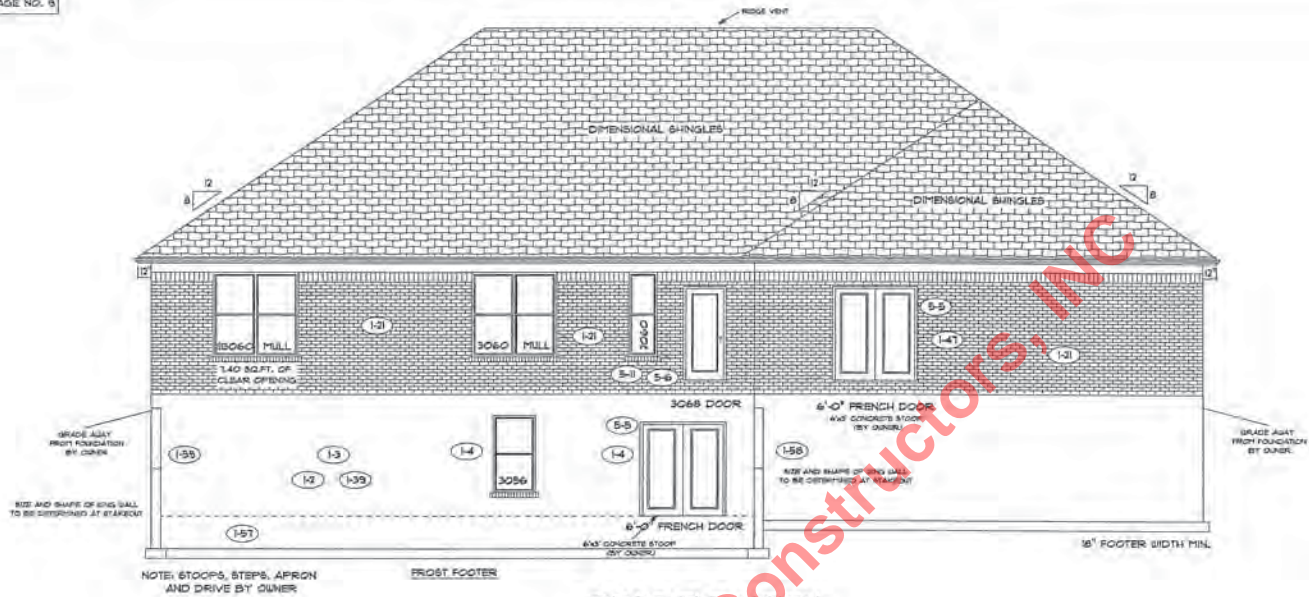


OPTIONS - SEE PAGE NO. 9



PAGE NO.: 1B

MODEL: HAMPTON

VER: DRAWING BY: BES

DATE: May 03, 2011

JOB NO.: 111-11-0100



TK CONSTRUCTORS

| | |
|---------------------|-------|
| Total Living Sq.Ft. | 2,713 |
| Garage | 871 |
| Total Sq.Ft. | 3,584 |
| Excluding Porch | 482 |

| ANDERSEN WINDOWS | |
|--|--|
| MODEL | R.O. SIZE |
| 3030 | 36" x 36" |
| 3040 | 36" x 48" |
| 3048 | 36" x 51" |
| 3056 | 36" x 66" |
| 3060 | 36" x 72" |
| 3048 MULL | 73" x 51" |
| 3056 MULL | 73" x 66" |
| 3060 MULL | 73" x 72" |
| ANDERSEN SLIDING DOOR | |
| R.O. | 73 3/4" x 82 7/8" |
| 3/0 FRONT DOOR | |
| R.O. | 5'2 1/2" x 82 1/2" |
| 3/0 FRONT DOOR WITH (1) SIDE LIGHT | |
| R.O. | 4'-3 1/2" x 82" |
| 3/0 FRONT DOOR WITH (2) SIDE LIGHTS | |
| R.O. | 5'-9" x 82" |
| R.O. FOR BYPASS DOORS USING DRY-WALL JAMB FACING IS 1 1/4" DOOR SIZE | |
| R.O. FOR BYPASS DOORS USING DRYWALL JAMB FACING MAKE SAME AS BOTH DOORS ADDED TOGETHER | |
| ALL INTERIOR DOORS | |
| SIZE x 2" TO WIDTH x 82 1/2" HIGH | R.O. POCKET DOOR - 6x DOOR WIDTH x 7' x 85" HIGH |

| 9'-0" FIRST FLOOR CEILING HEIGHT | |
|----------------------------------|---------------------------------------|
| INCLUDES: | |
| 1. | 4 1/4" BASEBOARDS IN LIEU OF 3 1/4" |
| 2. | 3060 WINDOWS IN LIEU OF 3056 WINDOWS |
| 3. | 3056 WINDOWS IN LIEU OF 3048 WINDOWS |
| 4. | DRYWALL WRAPPED OPENINGS 1" TALLER |
| 5. | 47" KITCHEN CABINETS STANDARD |
| 6. | 16'x8" AND 8'x8" GARAGE DOOR STANDARD |

ALL WALL DIMENSIONS ARE FACE TO FACE OF STUDS
 ALL INTERIOR WALLS ARE 3/4" UNLESS NOTED!
 EXHAUST BATH FANS ARE VENTED TO OUTSIDE AIR
 CODES 8454 (5.10) AQLPT. OF CLEAR OPENING!
 ALL BRICK LAYOUT MEASUREMENTS ARE 4"

