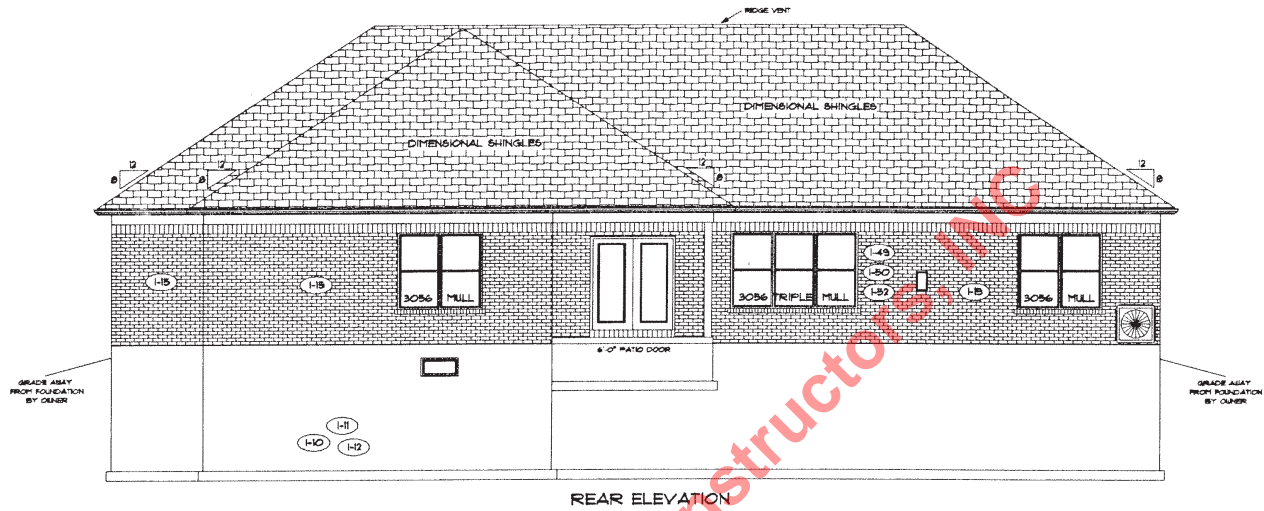
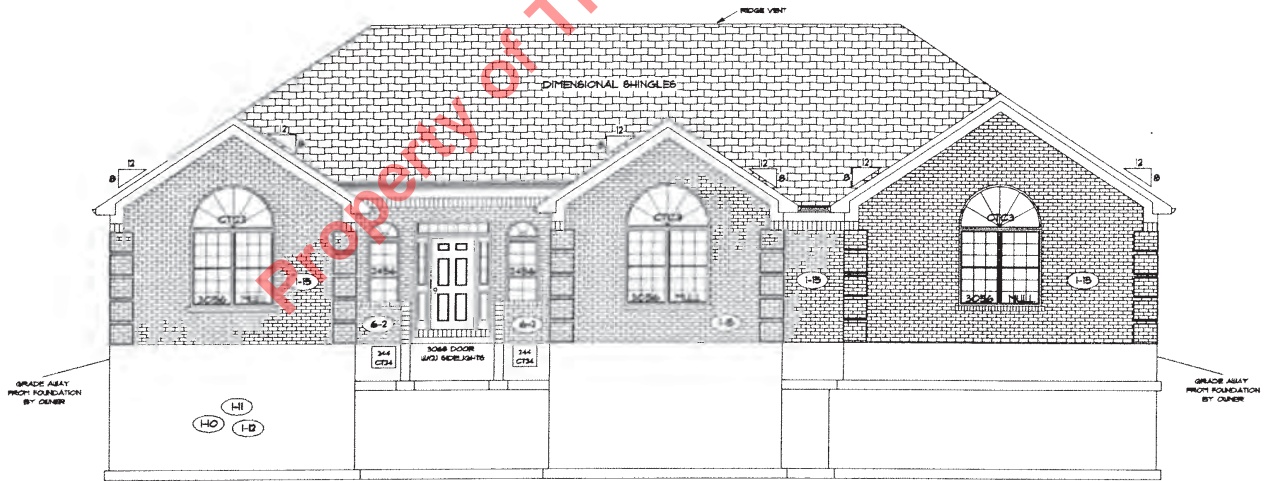


**HAMPTON STANDARD OPTIONS**

- 9'-0" FIRST FLOOR CEILING HEIGHT
- DIRECT VENT FIREPLACE
- QUIN CORNERS
- 5/12 PITCH HIP ROOF
- SCHROCK RAISED PANEL OAK CABINETS
- 42" WALL CABINETS
- TRAY CEILING IN MASTER BEDROOM
- COVERED REAR PORCH
- 3RD CAR GARAGE
- LEVEL 2 BETTER CARPET AND PAD



REAR ELEVATION



FRONT ELEVATION



FLOOR PLAN

|                       |       |
|-----------------------|-------|
| TOTAL LIVING SQ.FT.   | 2,620 |
| GARAGE                | 887   |
| TOTAL SQ.FT.          | 3,507 |
| EXCLUDING FRONT PORCH | 62    |
| EXCLUDING REAR PORCH  | 208   |

ANDERSEN WINDOW SCHEDULE  
- 200 SERIES -

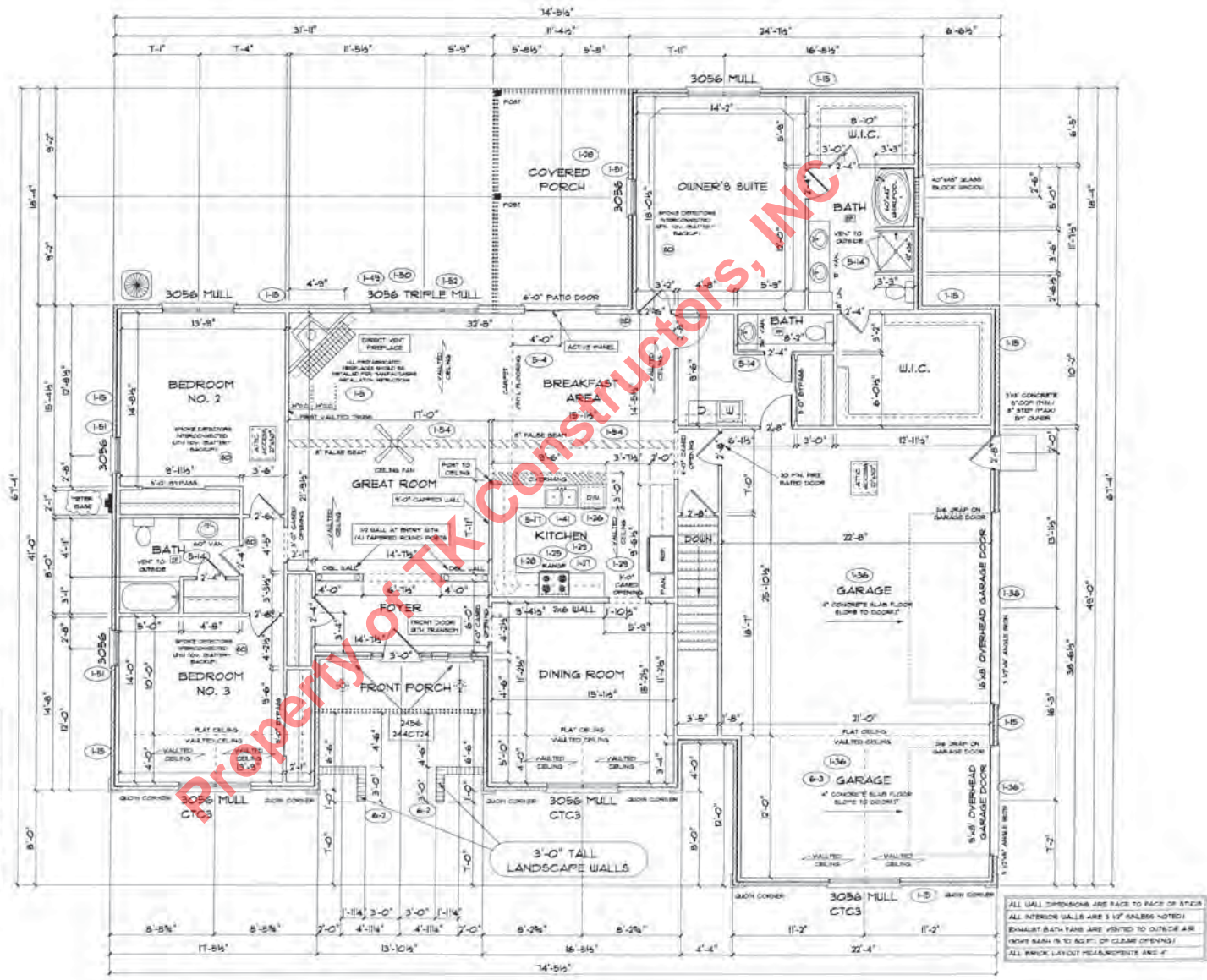
| ANDERSEN MODEL NO. | R.O. SIZE |
|--------------------|-----------|
| 3030               | 36" x 36" |
| 3040               | 36" x 48" |
| 3049*              | 36" x 51" |
| 3056*              | 36" x 66" |
| 3060*              | 36" x 72" |
| 3049 MULL*         | 73" x 51" |
| 3056 MULL*         | 73" x 66" |
| 3060 MULL*         | 73" x 72" |

- ANDERSEN SLIDING DOOR  
R.O. 72 3/4" x 82 1/8"
- 3'-0" FRONT DOOR WITH (U) SIDELITE  
R.O. 36 3/8" x 82 1/2"
- 3'-0" FRONT DOOR WITH (U) SIDELITE  
R.O. 51 1/8" x 82 1/2"
- 3'-0" FRONT DOOR WITH (S) SIDELITE  
R.O. 65 3/8" x 82 1/2"
- R.O. FOR BI-FOLD DOORS USING DRYWALL  
JAMB FACING x 1/4" DOOR SIZE
- R.O. FOR BYPASS DOORS USING DRYWALL  
JAMB FACING MAKE SAME AS BOTH DOORS  
ADDED TOGETHER
- ALL INTERIOR DOORS  
SIZE x 2" TO WIDTH x 82 1/2" HIGH
- R.O. POCKET DOOR  
(S) DOOR WIDTH x (7) x 88" HIGH
- \* - DENOTES OPENING MEETS  
EGRESS REQUIREMENTS

9'-0" FIRST FLOOR  
CEILING HEIGHT

INCLUDES:

- 4 1/4" BARRICADES IN LIEU OF 3 1/4"
- 3060 WINDOW IN LIEU OF 3056 WINDOW
- 3056 WINDOW IN LIEU OF 3049 WINDOW
- DRYWALL UNRAFFED OPENINGS 6" TALLER
- 42" KITCHEN CABINETS
- 16'x8' AND 9'x8' GARAGE DOORS



ALL WALL DIMENSIONS ARE FACE TO FACE OF STUD  
ALL INTERIOR WALLS ARE 1/2" BARRICADE NOTED  
EXHAUST FANS ARE VENTED TO OUTSIDE AIR  
DOOR SLASH IS TO RIGHT OF CLEAR OPENING  
ALL FINISH LAYOUT REQUIREMENTS ARE 2"

