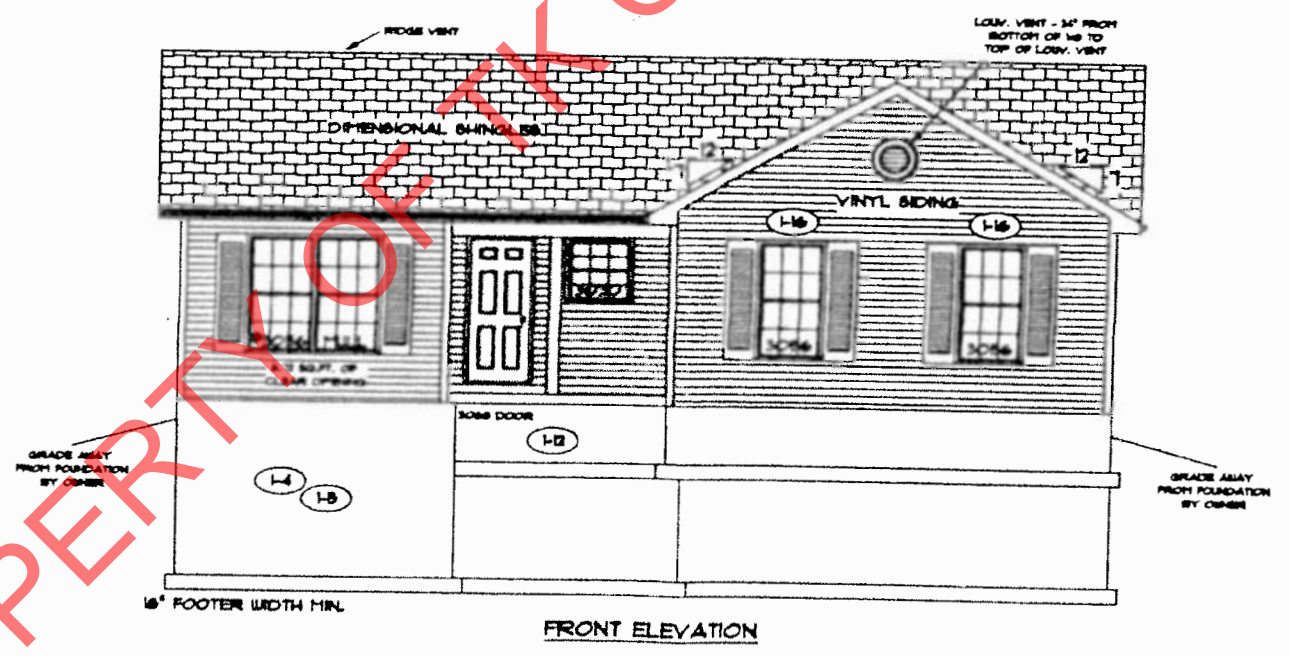
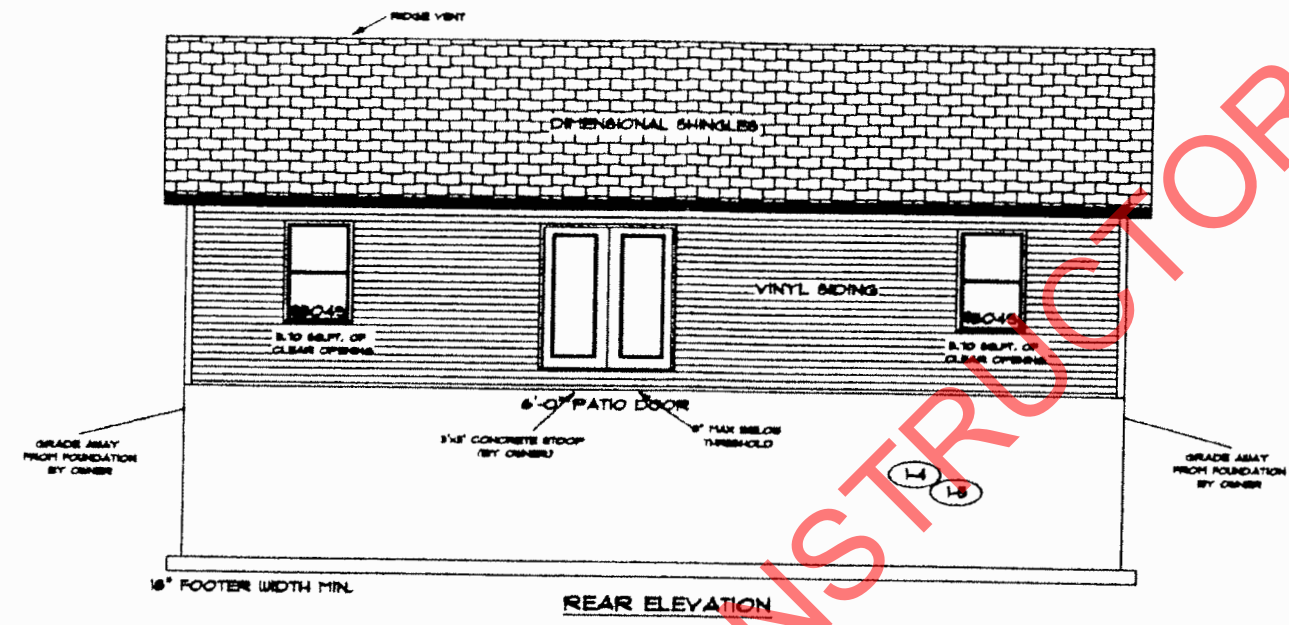


1-13-16  
marked up print for P.D.'s



PROPERTY OF TK CONSTRUCTORS, INC

PAGE NO: **1B**

ADDENDUM 1

VER: 02:36 PM

DRAWING BY: SES

1/8" = 1'

DATE: December 16, 2015

JOB NO.: 212-16-0411



**TK CONSTRUCTORS**

**GULFPORT**

gco

FLOOR PLAN

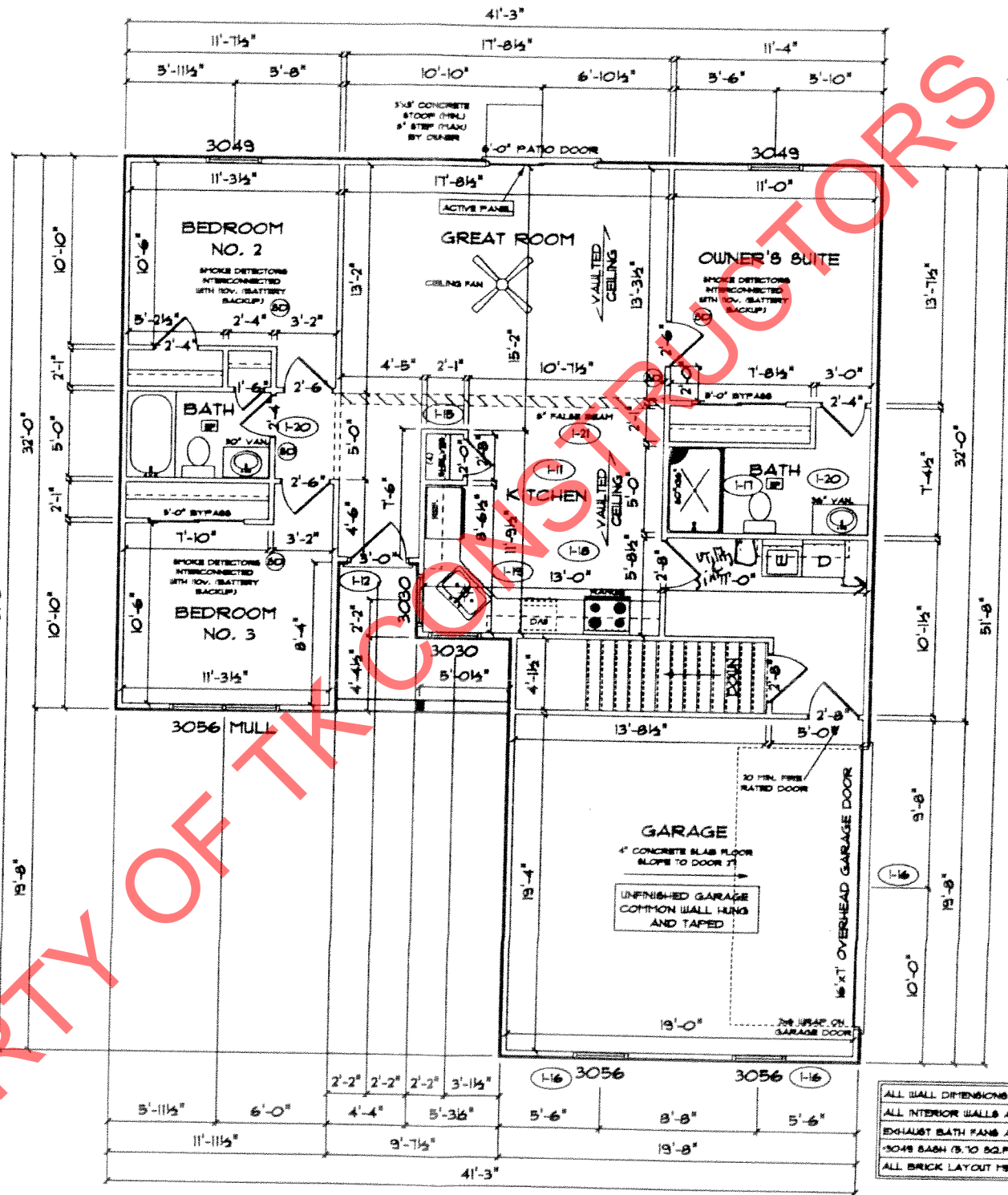
TOTAL LIVING SQ.FT.	1,273
GARAGE	385
TOTAL SQ.FT.	1,658
EXCLUDING PORCH	60

ANDERSEN WINDOW SCHEDULE  
- 200 SERIES -

ANDERSEN MODEL NO.	R.O. SIZE
3030	36" x 36"
3040	36" x 48"
3049	36" x 51"
3056	36" x 66"
3060	36" x 72"
3049 MULL.	13" x 51"
3056 MULL.	13" x 66"
3060 MULL.	13" x 72"

ANDERSEN SLIDING DOOR R.O. 12 3/4" x 82 1/8"
3'-0" FRONT DOOR R.O. 38 3/8" x 82 1/2"
3'-0" FRONT DOOR WITH (1) SIDELITE R.O. 51 1/8" x 82 1/2"
3'-0" FRONT DOOR WITH (2) SIDELITES R.O. 68 3/8" x 82 1/2"
R.O. FOR BI-FOLD DOORS USING DRYWALL JAMB FACING = 1 1/4" + DOOR SIZE x (81 1/2")
R.O. FOR BYPASS DOORS USING DRYWALL JAMB FACING MAKE SAME AS BOTH DOORS ADDED TOGETHER
ALL INTERIOR DOORS SIZE = 2" TO WIDTH x 82 1/2" HIGH
R.O. POCKET DOOR (2x DOOR WIDTH + 1") x 88" HIGH

•• DENOTES OPENING MEETS  
EGRESS REQUIREMENTS



ALL WALL DIMENSIONS ARE FACE TO FACE OF STUDS  
ALL INTERIOR WALLS ARE 5/2" (UNLESS NOTED)  
EXHAUST BATH FANS ARE VENTED TO OUTSIDE AIR  
5049 BASH (5.10 SQ.FT. OF CLEAR OPENING)  
ALL BRICK LAYOUT MEASUREMENTS ARE 4"

900

PROPERTY OF TK CONSTRUCTORS, INC

