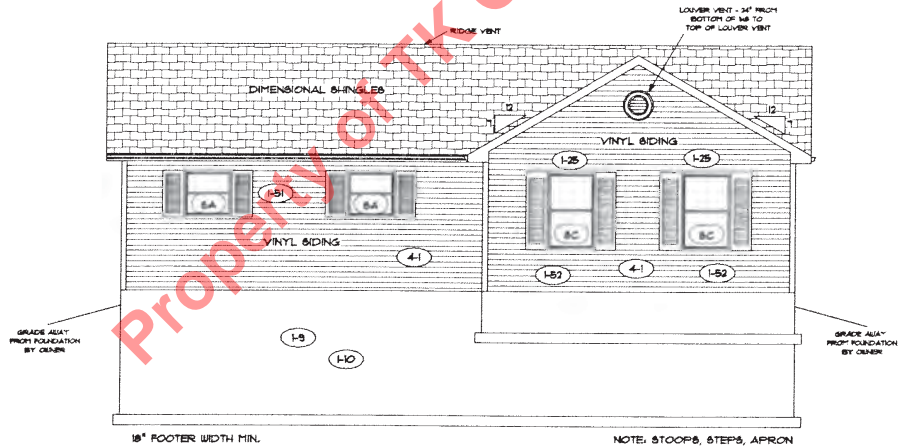
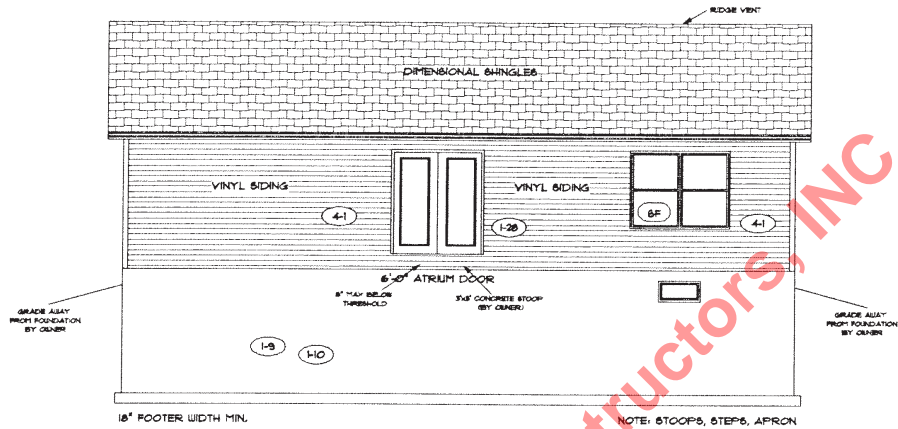


OPTIONS: SEE PAGE NO. 2



FLOOR PLAN

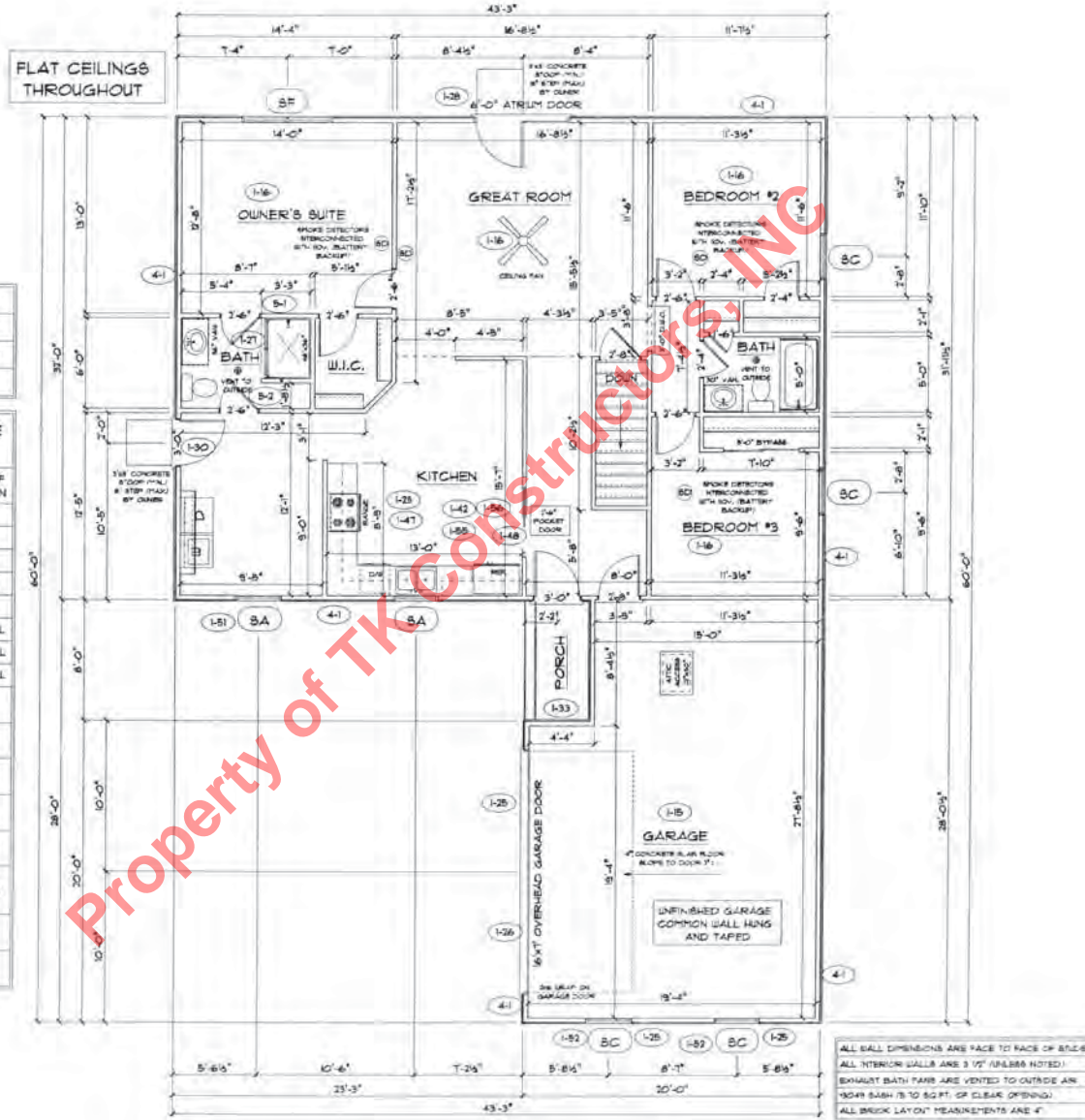
TOTAL LIVING SQ.FT.	1384
GARAGE	526
TOTAL SQ.FT.	1910
EXCLUDING PORCH	34

SILVERLINE WINDOW SCHEDULE - RANCH PLAN -

SYM.	SILVERLINE MODEL	R.O. SIZE	IN LIEU OF ANDERSEN
BA	3/2 x 3/0	38 1/2" x 36 1/2"	3030
BE	3/2 x 4/0	38 1/2" x 48 1/2"	3040
BC	3/2 x 5/0	38 1/2" x 60 1/2"	3048
BD	3/2 x 5/6	38 1/2" x 66 1/2"	3056
BE	3/2 x 6/0	38 1/2" x 72 1/2"	3060
BF	3/2 x 5/0 - 2	36" x 60 1/2"	3048 MULL
BG	3/2 x 5/6 - 2	36" x 66 1/2"	3056 MULL
BA	3/2 x 6/0 - 2	36" x 72 1/2"	3060 MULL

- SILVERLINE VINYL SLIDING 2 PANEL DOOR 60 x 68 - R.O. 71 1/8" x 60 1/2"
- 3'-0" FRONT DOOR R.O. 36 3/8" x 82 1/2"
- 3'-0" FRONT DOOR WITH (1) SIDELITE R.O. 51 1/8" x 82 1/2"
- 3'-0" FRONT DOOR WITH (2) SIDELITES R.O. 65 3/8" x 82 1/2"
- R.O. FOR BIFOLD DOORS USING DRYWALL JAMB FACING + 1/4" + DOOR SIZE
- R.O. FOR BYPASS DOORS USING DRYWALL JAMB FACING MAKE SAME AS BOTH DOORS ADDED TOGETHER
- ALL INTERIOR DOORS SIZE + 2" TO WIDTH x 82 1/2" HIGH
- R.O. POCKET DOOR 7x DOOR WIDTH x 73" x 85" HIGH

* - DENOTES OPENINGS MEETS EGRESS REQUIREMENTS



ALL BALL DIMENSIONS ARE FACE TO FACE OF STUDS
 ALL INTERIOR WALLS ARE 3/4" (UNLESS NOTED)
 EXHAUST BATH FANS ARE VENTED TO OUTSIDE AN
 18"X8" BASH IS TO 82 FT. OF CLEAR OPENING
 ALL BRICK LAYOUT MEASUREMENTS ARE 4"