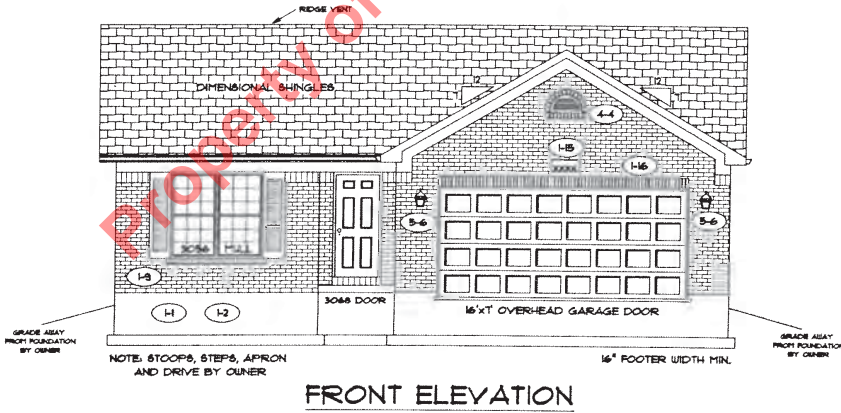
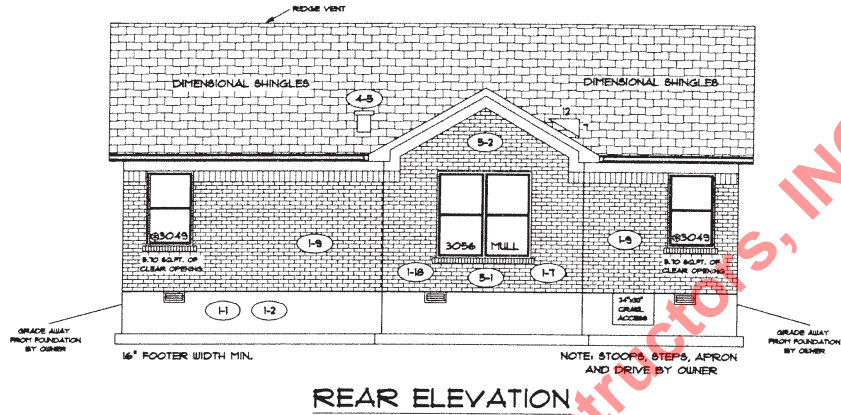


OPTIONS: SEE PAGE NO. 2



PAGE NO.:

10

MODEL: GULFPORT

VER: 07010

DRAWING BY: SBS

SCALE: 1/8"=1 FT.



DATE: September 29, 2011

H

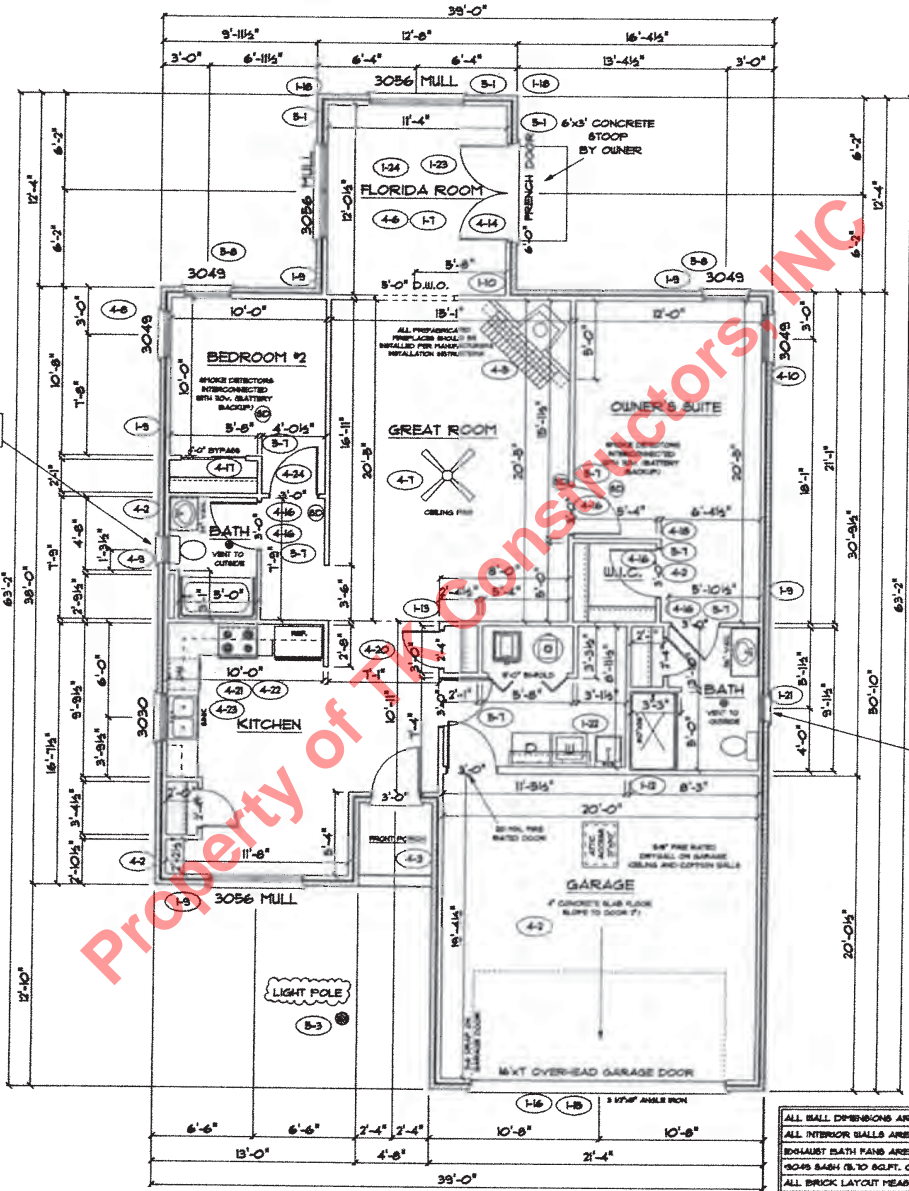
JOB NO.: 112-11-0081

TK CONSTRUCTORS

FLOOR PLAN

Total Living Sq.ft.	1460
Garage	426
Total Sq.ft.	1886
Excluding Porch	24

ANDERSEN WINDOWS	
MODEL	R.O. SIZE
3030	36" x 36"
3040	36" x 48"
3049	36" x 48"
3049	36" x 57"
3086	36" x 66"
3080	36" x 72"
3049 MULL	19" x 57"
3096 MULL	19" x 66"
3080 MULL	19" x 72"
ANDERSEN SLIDING DOOR	
R.O. 12 3/4" x 82 1/8"	
3/4 FRONT DOOR	
R.O. 3'-2 1/2" x 82 1/2"	
3/4 FRONT DOOR WITH (1) SIDE LIGHT	
R.O. 4'-3 1/2" x 82"	
3/4 FRONT DOOR WITH (2) SIDE LIGHTS	
R.O. 5'-9" x 82"	
R.O. FOR BYFOLD DOORS USING DRY-WALL JAMB FACING IS 1 1/4" DOOR SIZE	
R.O. FOR BYPASS DOORS USING DRYWALL JAMB FACING MAKE SAME AS BOTH DOORS ADDED TOGETHER	
ALL INTERIOR DOORS	
SIZE = 2" TO WIDTH x 82 1/2" HIGH	
R.O. POCKET DOOR - (2) DOOR WIDTH + 1" x 85" HIGH	



ALL WALL DIMENSIONS ARE FACE TO FACE OF STUDS
 ALL INTERIOR WALLS ARE 3/2" UNLESS NOTED
 BATHS BATH FANS ARE VENTED TO OUTSIDE AIR
 (3049 BATH IS TO ACFT. OF CLEAR OPENING)
 ALL BRICK LAYOUT MEASUREMENTS ARE 4"