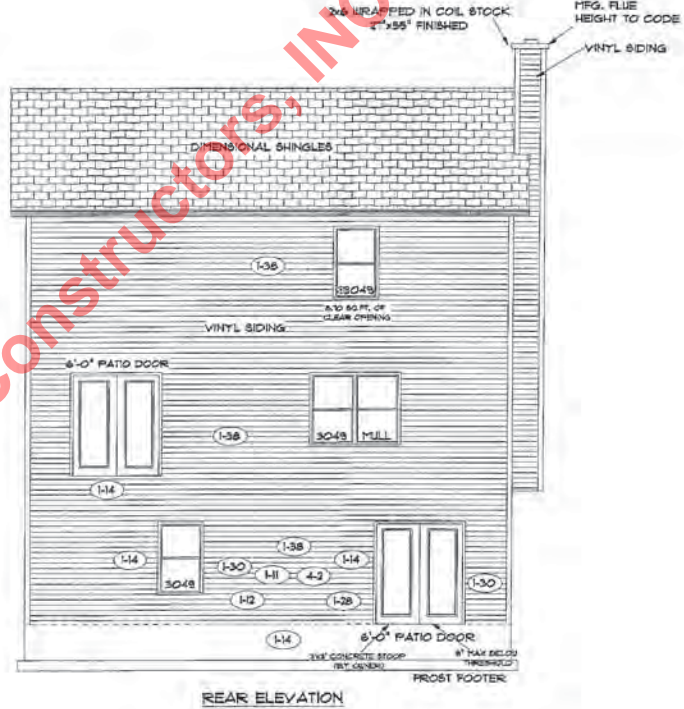


FRONT ELEVATION



REAR ELEVATION

Property of TK Constructors, Inc.



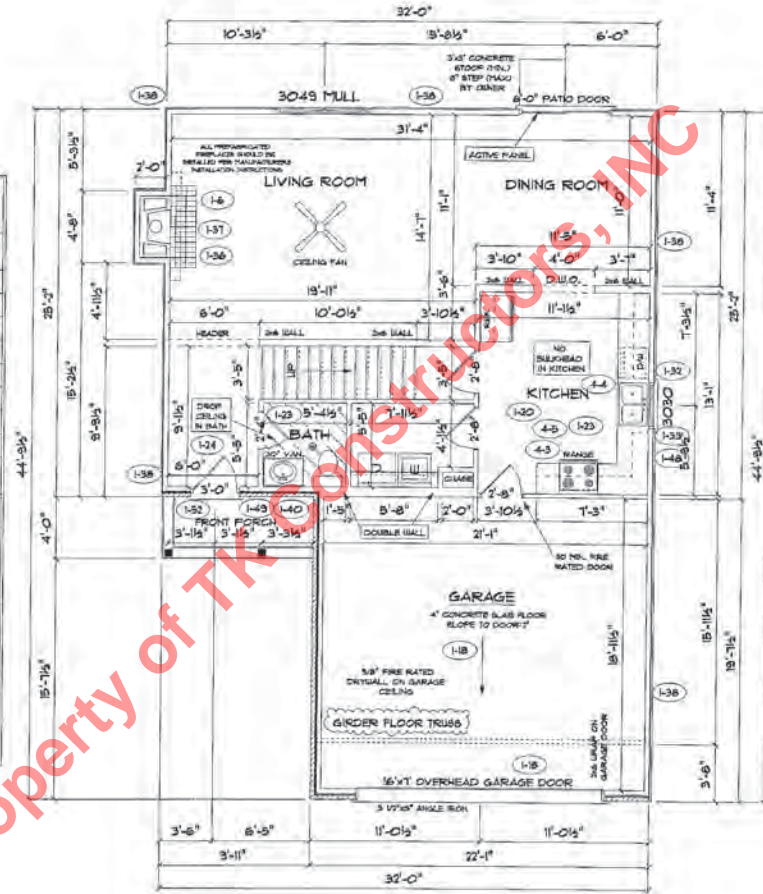
FLOOR PLAN

ANDERSEN WINDOW SCHEDULE
- 200 SERIES -

ANDERSEN MODEL NO.	R.O. SIZE
3030	36" x 36"
3040	36" x 48"
3049*	36" x 51"
3056*	36" x 66"
3060*	36" x 72"
3049 MULL*	73" x 51"
3056 MULL*	73" x 66"
3060 MULL*	73" x 72"

ANDERSEN SLIDING DOOR	
R.O. 12 3/4" x 82 7/8"	
3'-0" FRONT DOOR	
R.O. 33 3/8" x 82 1/2"	
3'-0" FRONT DOOR WITH (1) SIDELITE	
R.O. 51 7/8" x 82 1/2"	
3'-0" FRONT DOOR WITH (2) SIDELITES	
R.O. 69 3/8" x 82 1/2"	
R.O. FOR BI-FOLD DOORS USING DRYWALL	
JAMBS FACING + 1 1/4" + DOOR SIZE x (81 1/2")	
R.O. FOR BYPASS DOORS USING DRYWALL	
JAMBS FACING MAKE SAME AS BOTH DOORS	
ADDED TOGETHER	
ALL INTERIOR DOORS	
SIZE + 2" TO WIDTH x 82 1/2" HIGH	
R.O. POCKET DOOR	
(2x DOOR WIDTH + 1") x 85" HIGH	

* - DENOTES OPENING MEETS
ESRECS REQUIREMENTS



SECOND FLOOR PLAN

FIRST FLOOR SQ.FT.	805
SECOND FLOOR SQ.FT.	1,150
TOTAL LIVING SQ.FT.	1,955
GARAGE	433
TOTAL SQ.FT.	1,388
EXCLUDING PORCH	39

ANDERSEN WINDOW SCHEDULE
- 200 SERIES -

ANDERSEN MODEL NO.	R.O. SIZE
3030	36" x 36"
3040	36" x 48"
3049*	36" x 51"
3056*	36" x 66"
3060*	36" x 72"
3049 MULL*	13" x 51"
3056 MULL*	13" x 66"
3060 MULL*	13" x 72"

ANDERSEN SLIDING DOOR R.O. 12 3/4" x 82 1/8"
3'-0" FRONT DOOR R.O. 38 3/8" x 82 1/2"
3'-0" FRONT DOOR WITH (1) SIDELITE R.O. 51 1/8" x 82 1/2"
3'-0" FRONT DOOR WITH (2) SIDELITES R.O. 65 3/8" x 82 1/2"
R.O. FOR BI-FOLD DOORS USING DRYWALL JAMB FACING + 1 1/4" + DOOR SIZE x (81 1/2")
R.O. FOR BYPASS DOORS USING DRYWALL JAMB FACING MAKE SAME AS BOTH DOORS ADDED TOGETHER
ALL INTERIOR DOORS SIZE + 2" TO WIDTH x 82 1/2" HIGH
R.O. POCKET DOOR (2x) DOOR WIDTH + 1" x 82" HIGH

* * DENOTES OPENING MEETS
EGRESS REQUIREMENTS

