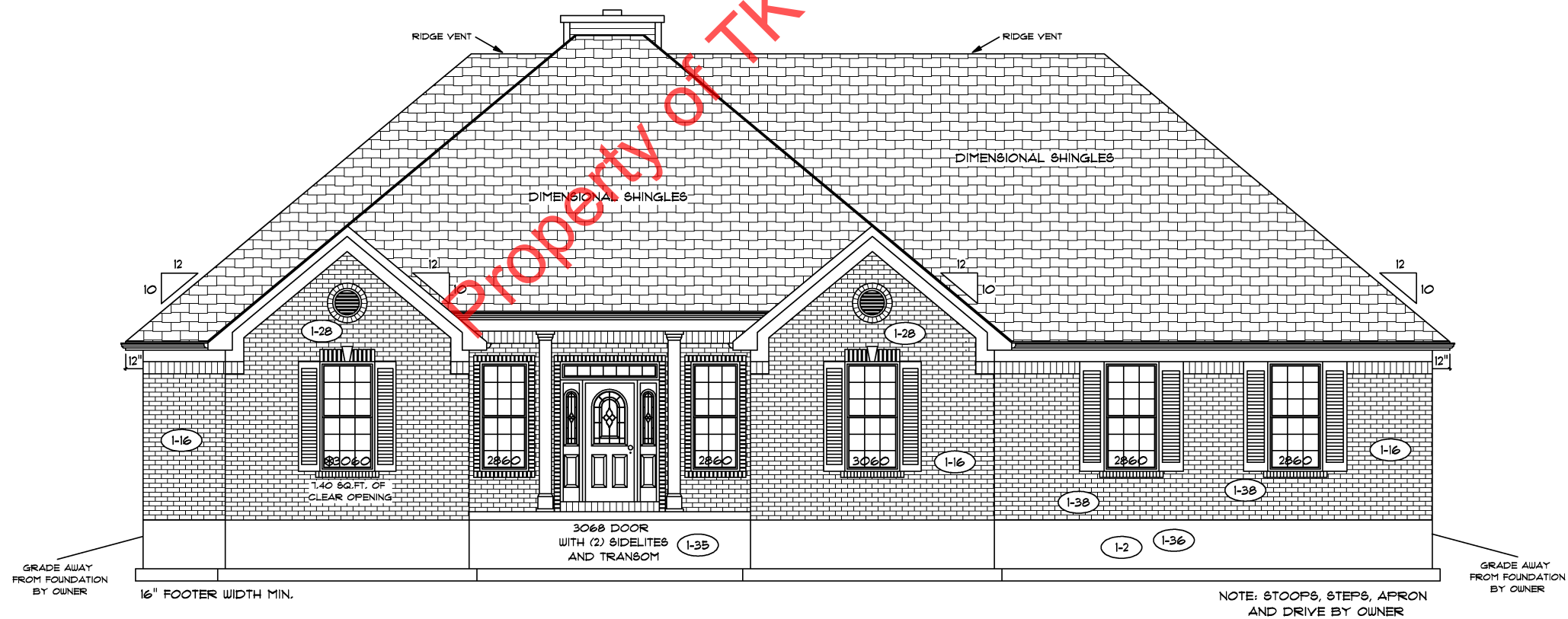


REAR ELEVATION



FRONT ELEVATION



FLOOR PLAN

TOTAL LIVING SQ.FT.	2,555
GARAGE	588
TOTAL SQ.FT.	3,143
EXCLUDING FRONT PORCH	92
EXCLUDING REAR PORCH	188

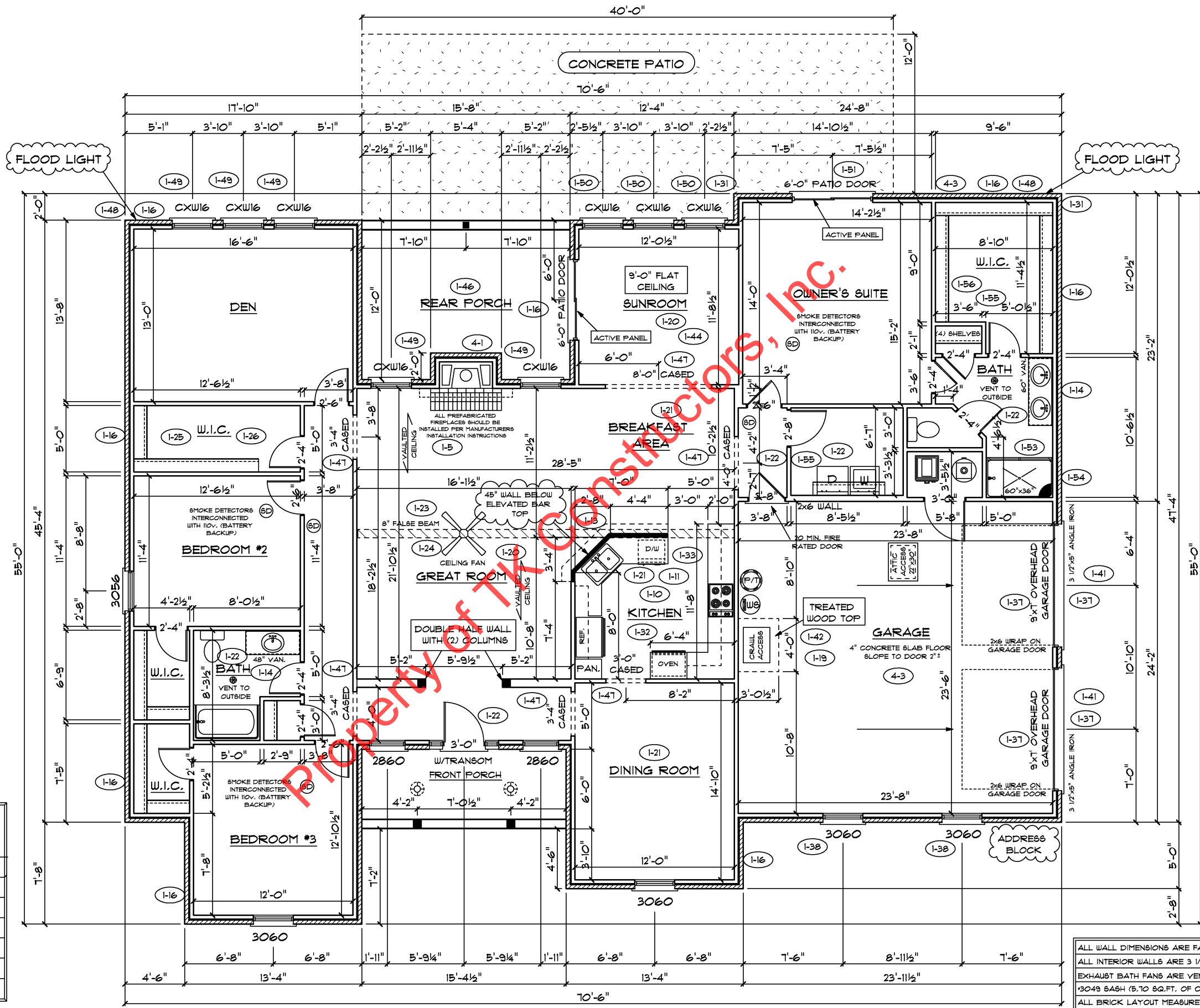
ANDERSEN WINDOW SCHEDULE
- 200 SERIES -

ANDERSEN MODEL NO.	R.O. SIZE
3030	36" x 36"
3040	36" x 48"
3049*	36" x 57"
3056*	36" x 66"
3060*	36" x 72"
3049 MULL*	73" x 57"
3056 MULL*	73" x 66"
3060 MULL*	73" x 72"

CXW16	35 1/2" x 72 3/8"
ANDERSEN SLIDING DOOR	R.O. 72 3/4" x 82 7/8"
3'-0" FRONT DOOR	R.O. 38 3/8" x 82 1/2"
3'-0" FRONT DOOR WITH (1) SIDELITE	R.O. 51 7/8" x 82 1/2"
3'-0" FRONT DOOR WITH (2) SIDELITES	R.O. 65 3/8" x 82 1/2"
R.O. FOR BI-FOLD DOORS USING DRYWALL JAMB FACING = 1 1/4" + DOOR SIZE x (81 1/2")	
R.O. FOR BYPASS DOORS USING DRYWALL JAMB FACING MAKE SAME AS BOTH DOORS ADDED TOGETHER	
ALL INTERIOR DOORS SIZE + 2" TO WIDTH x 82 1/2" HIGH	
R.O. POCKET DOOR (2x DOOR WIDTH + 1") x 85" HIGH	

9'-0" FIRST FLOOR
CEILING HEIGHT

INCLUDES:	
1.	4 1/4" BASEBOARDS IN LIEU OF 3 1/4"
2.	3060 WINDOWS IN LIEU OF 3056 WINDOWS
3.	3056 WINDOWS IN LIEU OF 3049 WINDOWS
4.	DRYWALL WRAPPED OPENINGS 12" TALLER
5.	42" KITCHEN CABINETS STANDARD
6.	9'x8' GARAGE DOORS STANDARD



ALL WALL DIMENSIONS ARE FACE TO FACE OF STUDS
ALL INTERIOR WALLS ARE 3 1/2" (UNLESS NOTED)
EXHAUST BATH FANS ARE VENTED TO OUTSIDE AIR
3049 SASH (5.10 SQ.FT. OF CLEAR OPENING)
ALL BRICK LAYOUT MEASUREMENTS ARE 4"