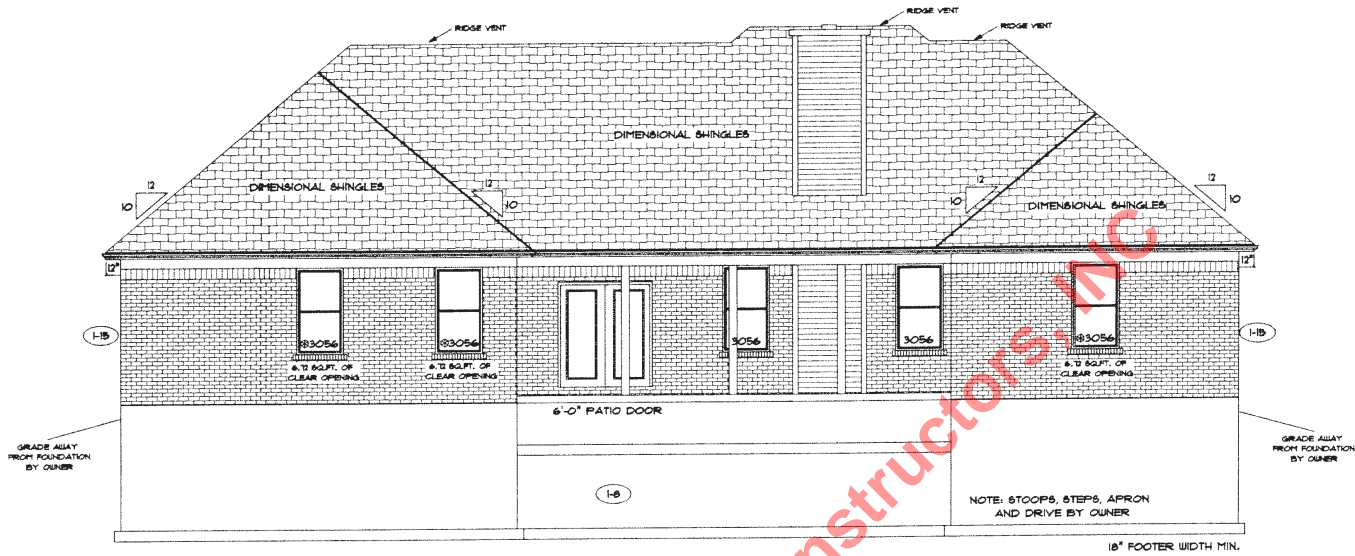
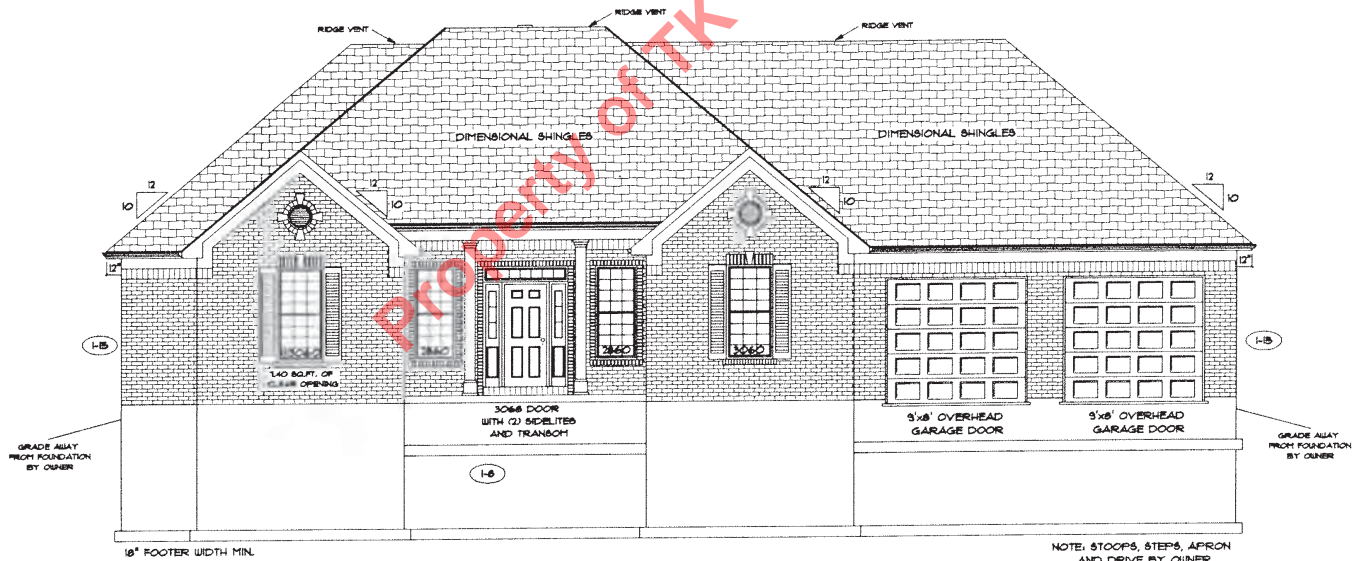


OPTIONS: SEE PAGE NO. 2



REAR ELEVATION



FRONT ELEVATION

PAGE NO.: 1B

MODEL: CLEARWATER  
VER: 06101

DRAWING BY: SES

SCALE: 1/8" IN.=1 FT.



CONSTRUCTORS

DATE: September 07, 2011

JOB NO.: 112-11-0112

TK CONSTRUCTORS

**FLOOR PLAN**

Total Living Sq.ft.	2280
Garage	546
Total Sq.ft.	2826
Excluding Porch Front	92
Excluding Porch Rear	156

**ANDERSEN WINDOWS**

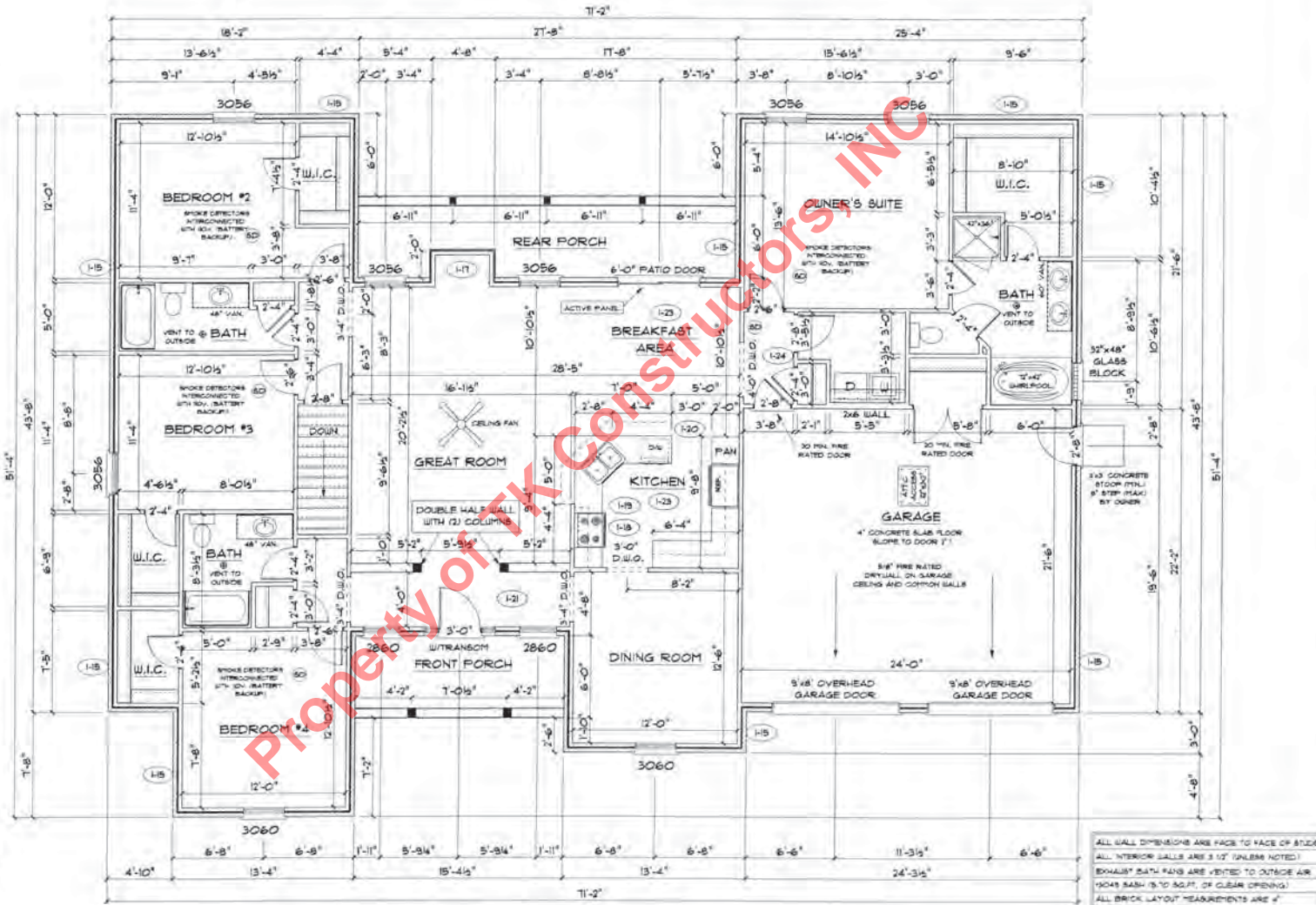
MODEL	R.O. SIZE
3030	36" x 36"
3040	36" x 48"
3048	36" x 51"
3056	36" x 66"
3060	36" x 72"
3048 MULL	13" x 51"
3056 MULL	13" x 66"
3060 MULL	13" x 72"

ANDERSEN SLIDING DOOR  
R.O. 72 3/4" x 82 1/8"  
3/0 FRONT DOOR  
R.O. 3'-2 1/2" x 82 1/2"  
3/0 FRONT DOOR WITH (1) SIDE LIGHT  
R.O. 4'-3 1/2" x 82"  
3/0 FRONT DOOR WITH (2) SIDE LIGHTS  
R.O. 5'-5" x 82"  
R.O. FOR BYFOLD DOORS USING DRY-WALL JAMB FACING IS 1 1/4" DOOR SIZE  
R.O. FOR BYPASS DOORS USING DRY-WALL JAMB FACING MAKE SAME AS BOTH DOORS ADDED TOGETHER  
ALL INTERIOR DOORS  
SIZE = 2" TO WIDTH x 82 1/2" HIGH  
R.O. POCKET DOOR = (2x) DOOR WIDTH x 17" x 85" HIGH

**9'-0" FIRST FLOOR CEILING HEIGHT**

**INCLUDES:**

- 4 1/4" BASEBOARDS IN LIBU OF 3/4"
- 3060 WINDOWS IN LIBU OF 3056 WINDOWS
- 3056 WINDOWS IN LIBU OF 3048 WINDOWS
- DRYWALL WRAPPED OPENINGS 12" TALLER
- 42" KITCHEN CABINETS STANDARD
- 9'6" GARAGE DOORS STANDARD



ALL WALL DIMENSIONS ARE FACE TO FACE OF STUDS  
ALL INTERIOR WALLS ARE 3/4" TOLERANCE NOTED  
EXHAUST BATH FANS ARE VENTED TO OUTSIDE AIR  
(1048 SASH IS 5'0" SQ.FT. OF CLEAR OPENING)  
ALL BRICK LAYOUT MEASUREMENTS ARE 4"