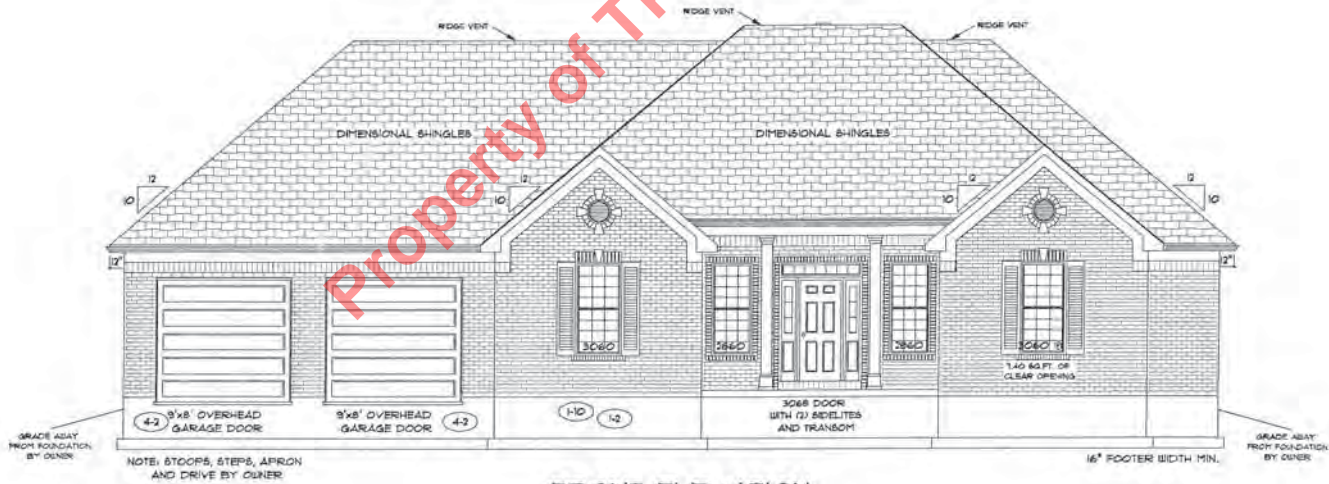


REAR ELEVATION



FRONT ELEVATION



CONSTRUCTORS

FLOOR PLAN

TOTAL LIVING SQ.FT.	2276
GARAGE	539
TOTAL SQ.FT.	2815
EXCLUDING FRONT PORCH	92
EXCLUDING REAR PORCH	161

ANDERSEN WINDOW SCHEDULE - 200 SERIES -

ANDERSEN MODEL NO.	R.O.	SIZE
3030	36" x 36"	
3040	36" x 48"	
3049*	36" x 57"	
3056*	36" x 66"	
3060*	36" x 72"	
3049 MULL*	73" x 57"	
3056 MULL*	73" x 66"	
3060 MULL*	73" x 72"	

- ANDERSEN SLIDING DOOR
R.O. 72 3/4" x 82 7/8"
- 3'-0" FRONT DOOR
R.O. 35 3/8" x 82 1/2"
- 3'-0" FRONT DOOR WITH (1) SIDELITE
R.O. 51 7/8" x 82 1/2"
- 3'-0" FRONT DOOR WITH (2) SIDELITES
R.O. 65 3/8" x 82 1/2"
- R.O. FOR BI-FOLD DOORS USING DRYWALL
JAMB FACING = 1/4" + DOOR SIZE
- R.O. FOR BYPASS DOORS USING DRYWALL
JAMB FACING MAKE SAME AS BOTH DOORS
ADDED TOGETHER
- ALL INTERIOR DOORS
SIZE + 2" TO WIDTH x 82 1/2" HIGH
- R.O. POCKET DOOR
(2x DOOR WIDTH + 1") x 85" HIGH

9'-0" FIRST FLOOR CEILING HEIGHT

INCLUDES:	
1.	4 1/4" BASEBOARDS IN LIEU OF 3 1/4"
2.	3060 WINDOWS IN LIEU OF 3056 WINDOWS
3.	3056 WINDOWS IN LIEU OF 3048 WINDOWS
4.	DRYWALL UNWRAPPED OPENINGS 12" TALLER
5.	42" KITCHEN CABINETS STANDARD
6.	5'x8' GARAGE DOORS STANDARD

